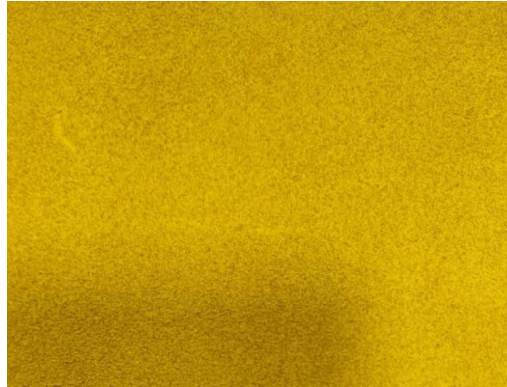


YELLOW HE4R

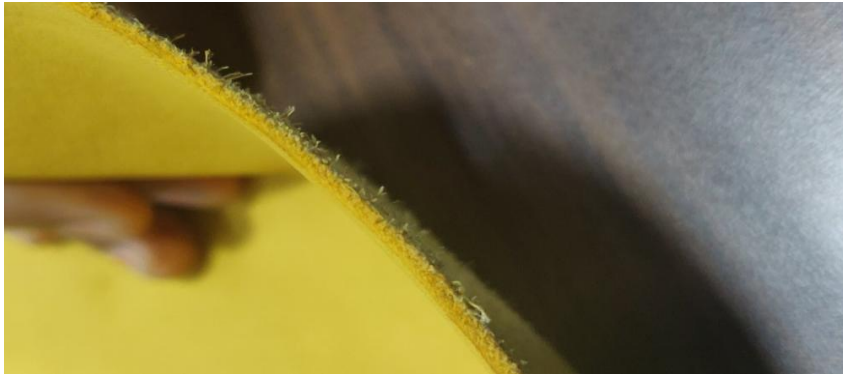
TOP DYEING - 2%



SPLIT - 3%



Penetration



60° Solubility	Penetration	Light	F A S T N E S S					
			PERSPIRATION			WASHING		
			CS	SC	SW	CS	SC	SW
60	4	3-4	3-4	3	3-4	3	2-3	3

SCALE - 1 TO 5

CS - COTTON + SILK

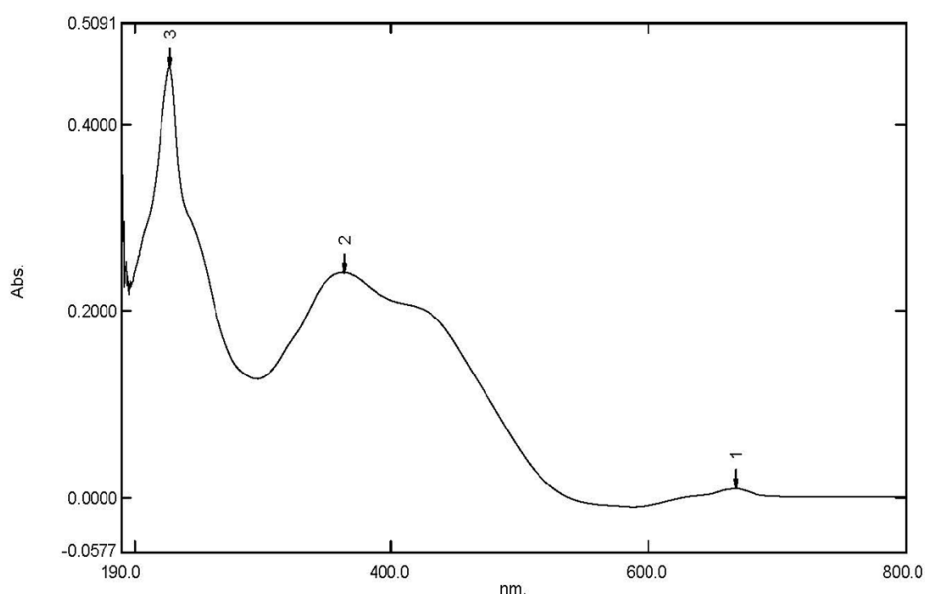
SC - SPUN DIACETATE

SW - SPUN WOOL

Spectrum Peak Pick Report

28-02-2019 03:10:34 PM

Data Set: YELLOWHE4R B-2018-91 10PPM - RawData



[Measurement Properties]
Wavelength Range (nm.): 190.0 to 800.0
Scan Speed: Fast
Sampling Interval: 0.5
Auto Sampling Interval: Enabled
Scan Mode: Single

No.	P/V	Wavelength	Abs.	Description
1	📍	668.5	0.0092	
2	📍	363.0	0.2415	
3	📍	227.0	0.4619	

[Instrument Properties]
Instrument Type: UV-1900 Series
Measuring Mode: Absorbance
Slit Width: 1.0 nm
Light Source Change Wavelength: 340.8 nm
S/R Exchange: Normal

[Attachment Properties]
Attachment: None

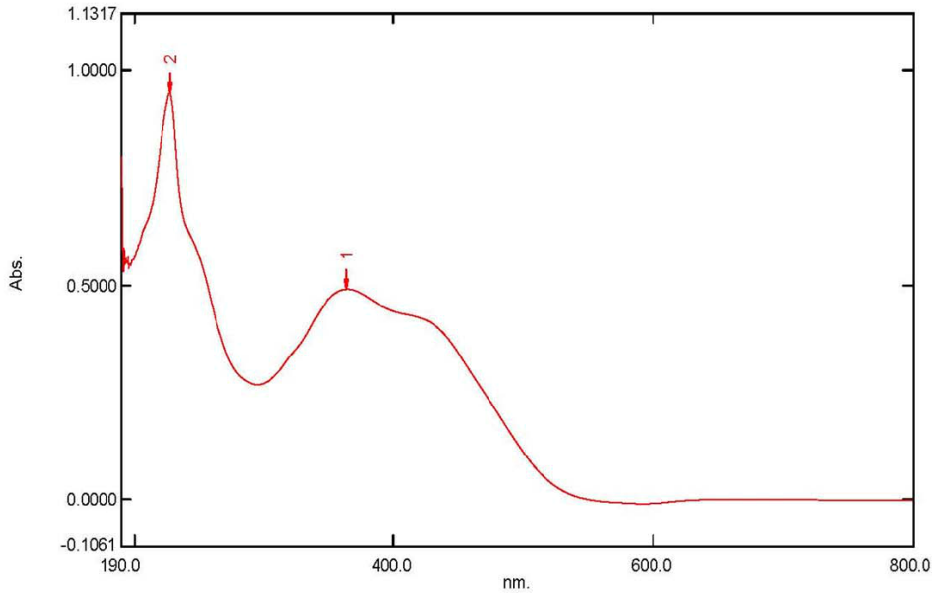
[Operation]
Threshold: 0.0010000
Points: 4
InterPolate: Disabled
Average: Disabled

[Sample Preparation Properties]
Weight: 0.1
Volume: 100
Dilution: 10 ppm
Path Length:
Additional Information:

Spectrum Peak Pick Report

28-02-2019 03:12:48 PM

Data Set: YELLOWHE4R B-2018-91 20PPM - RawData



[Measurement Properties]
Wavelength Range (nm.): 190.0 to 800.0
Scan Speed: Fast
Sampling Interval: 0.5
Auto Sampling Interval: Enabled
Scan Mode: Single

No.	P/V	Wavelength	Abs.	Description
1	📍	364.0	0.4896	
2	📍	227.0	0.9476	

[Instrument Properties]
Instrument Type: UV-1900 Series
Measuring Mode: Absorbance
Slit Width: 1.0 nm
Light Source Change Wavelength: 340.8 nm
S/R Exchange: Normal

[Attachment Properties]
Attachment: None

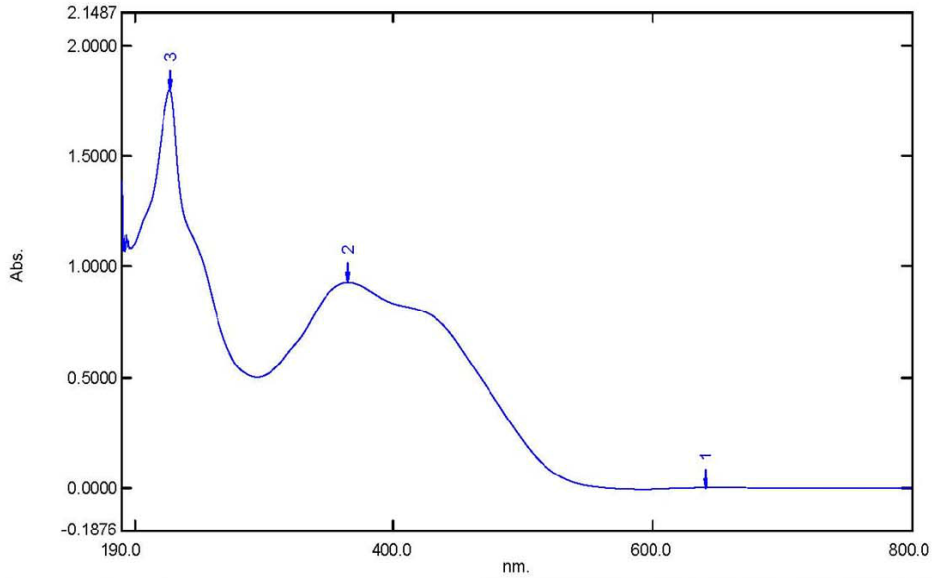
[Operation]
Threshold: 0.0010000
Points: 4
InterPolate: Disabled
Average: Disabled

[Sample Preparation Properties]
Weight: 0.1
Volume: 100
Dilution: 20 ppm
Path Length:
Additional Information:

Spectrum Peak Pick Report

28-02-2019 03:15:22 PM

Data Set: YELLOWHE4R B-2018-91 40PPM - RawData



[Measurement Properties]
 Wavelength Range (nm.): 190.0 to 800.0
 Scan Speed: Fast
 Sampling Interval: 0.5
 Auto Sampling Interval: Enabled
 Scan Mode: Single

No.	P/V	Wavelength	Abs.	Description
1	Ⓢ	641.0	0.0010	
2	Ⓢ	364.5	0.9299	
3	Ⓢ	227.0	1.8013	

[Instrument Properties]
 Instrument Type: UV-1900 Series
 Measuring Mode: Absorbance
 Slit Width: 1.0 nm
 Light Source Change Wavelength: 340.8 nm
 S/R Exchange: Normal

[Attachment Properties]
 Attachment: None

[Operation]
 Threshold: 0.0010000
 Points: 4
 InterPolate: Disabled
 Average: Disabled

[Sample Preparation Properties]
 Weight: 0.1
 Volume: 100
 Dilution: 40 ppm
 Path Length:
 Additional Information: