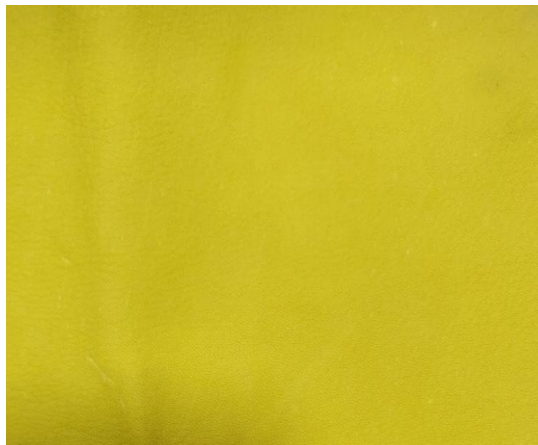




YELLOW BROWN M3RL

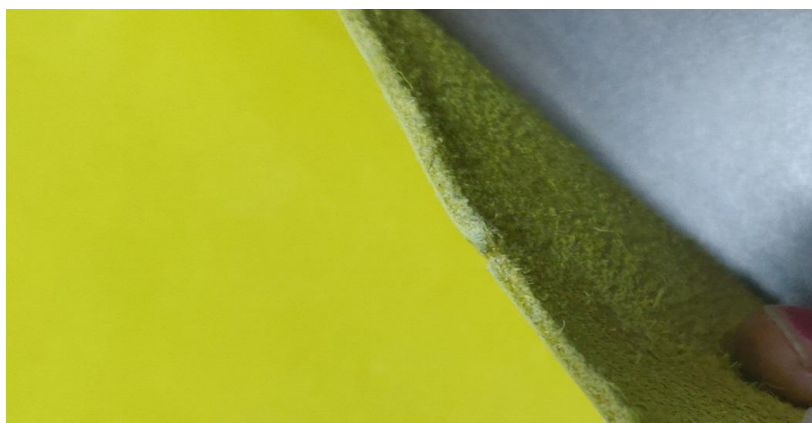
TOP DYEING - 2%



SPLIT - 3%



PENETRATION



60° Solubility	Penetration	Light	F A S T N E S S					
			PERSPIRATION			WASHING		
			CS	SC	SW	CS	SC	SW
100	4	4	4	2	2	3	3	4

SCALE - 1 TO 5

CS - COTTON + SILK

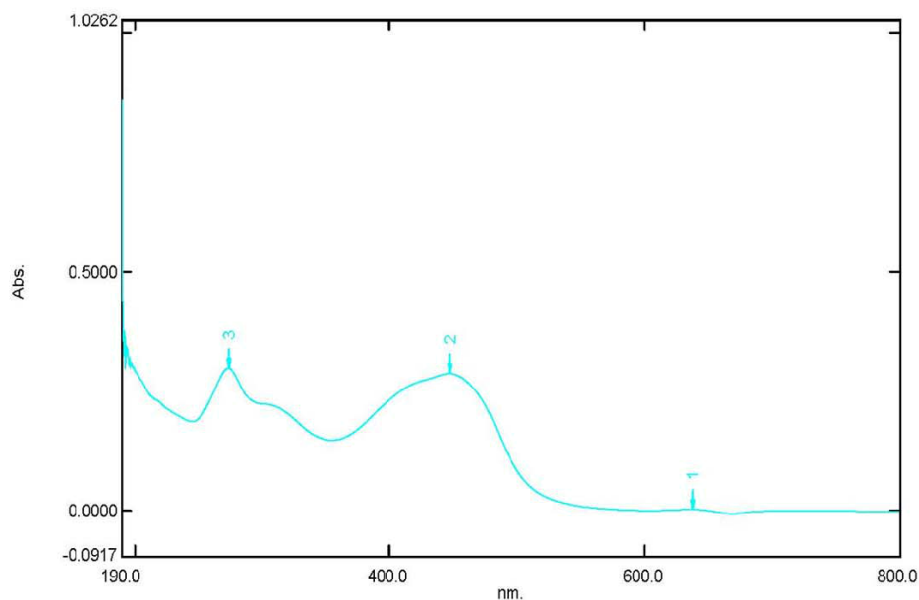
SC - SPUN DIACETATE

SW - SPUN WOOL

Spectrum Peak Pick Report

05-03-2019 01:00:38 PM

Data Set: YELLOW BRN M3RL B-2018-96 10PPM - RawData



[Measurement Properties]
Wavelength Range (nm.): 190.0 to 800.0
Scan Speed: Fast
Sampling Interval: 0.5
Auto Sampling Interval: Enabled
Scan Mode: Single

No.	P/V	Wavelength	Abs.	Description
1	●	637.5	0.0036	
2	●	447.0	0.2878	
3	●	273.5	0.2993	

[Instrument Properties]
Instrument Type: UV-1900 Series
Measuring Mode: Absorbance
Slit Width: 1.0 nm
Light Source Change Wavelength: 340.8 nm
S/R Exchange: Normal

[Attachment Properties]
Attachment: None

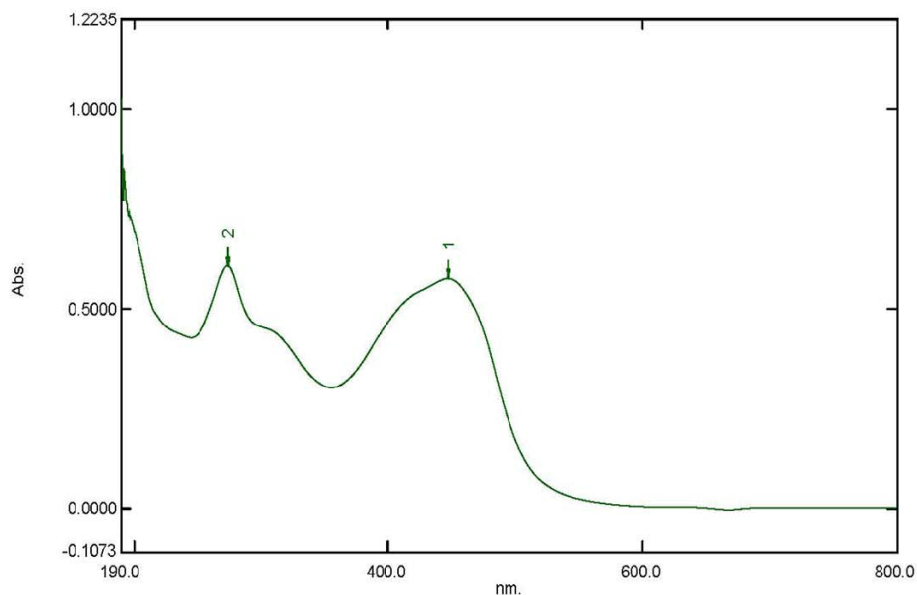
[Operation]
Threshold: 0.0010000
Points: 4
Interpolate: Disabled
Average: Disabled

[Sample Preparation Properties]
Weight: 0.1
Volume: 100
Dilution: 10 ppm
Path Length:
Additional Information:

Spectrum Peak Pick Report

05-03-2019 01:01:08 PM

Data Set: YELLOW BRN M3RL B-2018-96 20PPM - RawData



[Measurement Properties]
Wavelength Range (nm.): 190.0 to 800.0
Scan Speed: Fast
Sampling Interval: 0.5
Auto Sampling Interval: Enabled
Scan Mode: Single

No.	P/V	Wavelength	Abs.	Description
1	●	447.0	0.5747	
2	●	273.5	0.6066	

[Instrument Properties]
Instrument Type: UV-1900 Series
Measuring Mode: Absorbance
Slit Width: 1.0 nm
Light Source Change Wavelength: 340.8 nm
S/R Exchange: Normal

[Attachment Properties]
Attachment: None

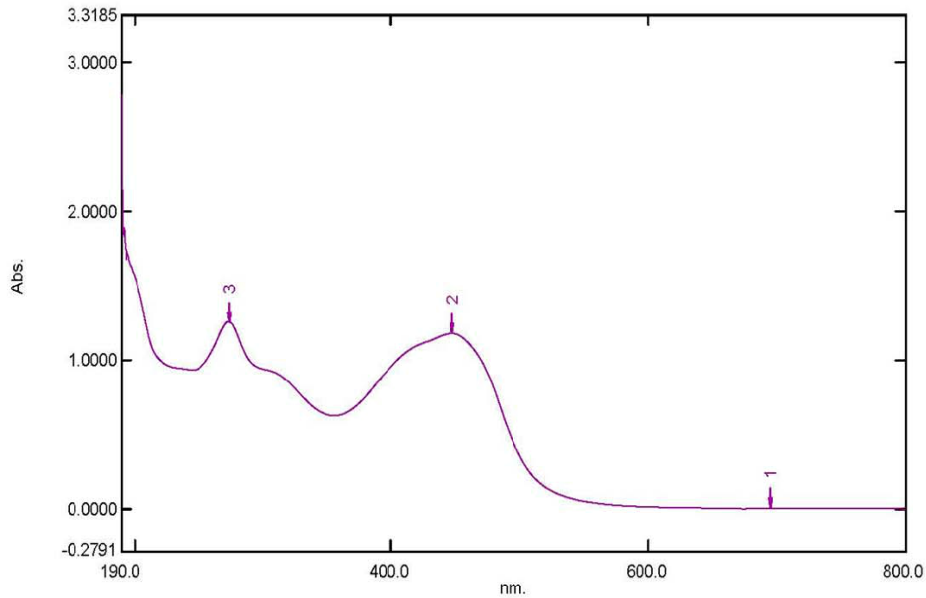
[Operation]
Threshold: 0.0010000
Points: 4
InterPolate: Disabled
Average: Disabled

[Sample Preparation Properties]
Weight: 0.1
Volume: 100
Dilution: 20 ppm
Path Length:
Additional Information:

Spectrum Peak Pick Report

05-03-2019 01:01:35 PM

Data Set: YELLOW BRN M3RL B-2018-96 40PPM - RawData



[Measurement Properties]

Wavelength Range (nm.): 190.0 to 800.0
 Scan Speed: Fast
 Sampling Interval: 0.5
 Auto Sampling Interval: Enabled
 Scan Mode: Single

No.	P/V	Wavelength	Abs.	Description
1	●	696.0	0.0040	
2	●	447.0	1.1776	
3	●	273.5	1.2565	

[Instrument Properties]

Instrument Type: UV-1900 Series
 Measuring Mode: Absorbance
 Slit Width: 1.0 nm
 Light Source Change Wavelength: 340.8 nm
 S/R Exchange: Normal

[Attachment Properties]

Attachment: None

[Operation]

Threshold: 0.0010000
 Points: 4
 InterPolate: Disabled
 Average: Disabled

[Sample Preparation Properties]

Weight: 0.1
 Volume: 100
 Dilution: 40 ppm
 Path Length:
 Additional Information: