

TURQ. BLUE M5G

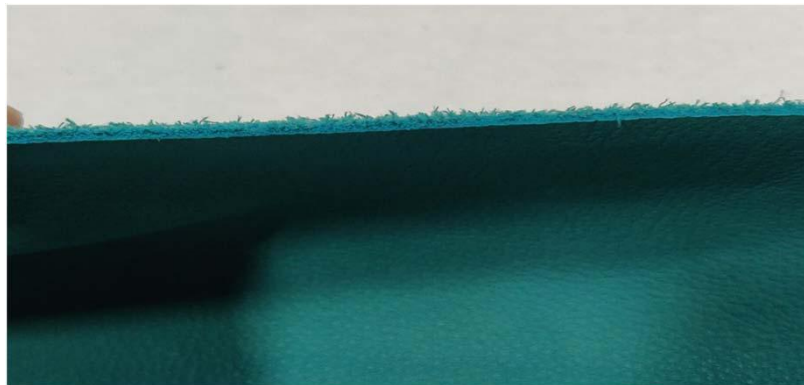
TOP DYEING - 2%



SPLIT - 3%



PENETRATION



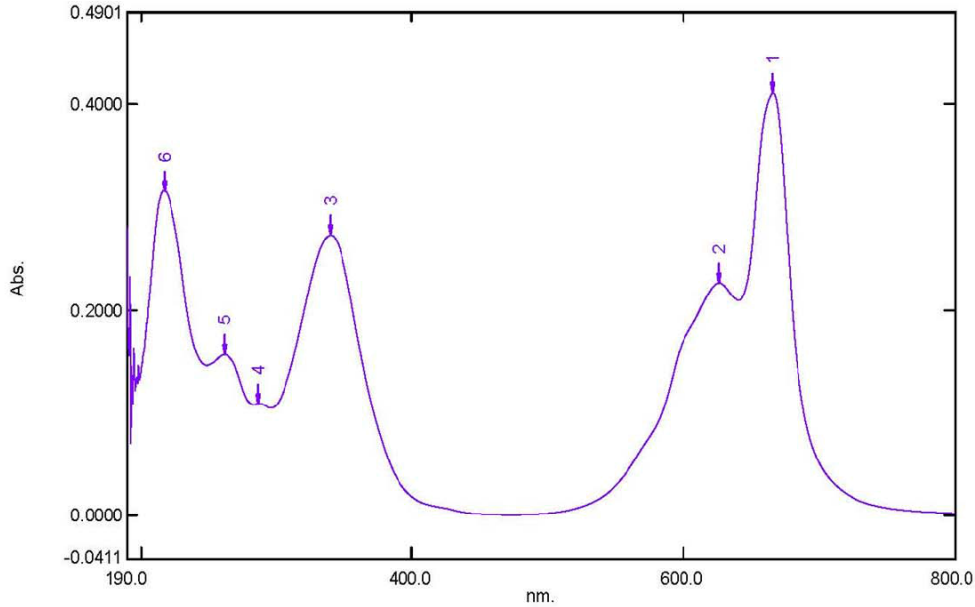
| 60° Solubility | Penetration | Light | F A S T N E S S | | | | | |
|----------------|-------------|-------|-----------------|-----|-----|---------|----|----|
| | | | PERSPIRATION | | | WASHING | | |
| | | | CS | SC | SW | CS | SC | SW |
| 60 | 4 | 4-5 | 4-5 | 4-5 | 4-5 | 5 | 5 | 5 |

SCALE - 1 TO 5
 CS - COTTON + SILK
 SC - SPUN DIACETATE
 SW - SPUN WOOL

Spectrum Peak Pick Report

04-04-2019 03:53:46 PM

Data Set: TURQ BLUE M5G B-2018-195 10PPM - RawData



[Measurement Properties]
Wavelength Range (nm.): 190.0 to 800.0
Scan Speed: Fast
Sampling Interval: 0.5
Auto Sampling Interval: Enabled
Scan Mode: Single

[Instrument Properties]
Instrument Type: UV-1900 Series
Measuring Mode: Absorbance
Slit Width: 1.0 nm
Light Source Change Wavelength: 340.8 nm
S/R Exchange: Normal

[Attachment Properties]
Attachment: None

[Operation]
Threshold: 0.0010000
Points: 4
InterPolate: Disabled
Average: Disabled

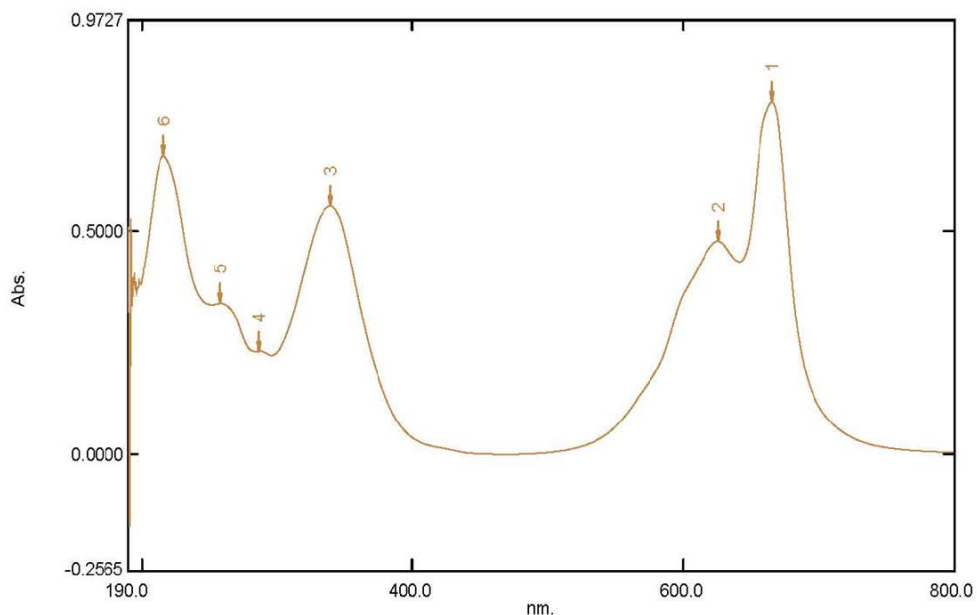
[Sample Preparation Properties]
Weight: 0.1
Volume: 100
Dilution: 10 ppm
Path Length:
Additional Information:

| No. | P/V | Wavelength | Abs. | Description |
|-----|-----|------------|--------|-------------|
| 1 | ⊕ | 666.5 | 0.4111 | |
| 2 | ⊕ | 627.0 | 0.2262 | |
| 3 | ⊕ | 339.5 | 0.2727 | |
| 4 | ⊕ | 286.5 | 0.1086 | |
| 5 | ⊕ | 261.5 | 0.1562 | |
| 6 | ⊕ | 217.0 | 0.3161 | |

Spectrum Peak Pick Report

04-04-2019 03:56:49 PM

Data Set: TURQ BLUE M5G B-2018-195 20PPM - RawData



[Measurement Properties]
Wavelength Range (nm.): 190.0 to 800.0
Scan Speed: Fast
Sampling Interval: 0.5
Auto Sampling Interval: Enabled
Scan Mode: Single

| No. | P/V | Wavelength | Abs. | Description |
|-----|-----|------------|--------|-------------|
| 1 | Ⓢ | 666.0 | 0.7899 | |
| 2 | Ⓢ | 626.0 | 0.4780 | |
| 3 | Ⓢ | 339.5 | 0.5577 | |
| 4 | Ⓢ | 286.5 | 0.2322 | |
| 5 | Ⓢ | 258.5 | 0.3386 | |
| 6 | Ⓢ | 216.0 | 0.6699 | |

[Instrument Properties]
Instrument Type: UV-1900 Series
Measuring Mode: Absorbance
Slit Width: 1.0 nm
Light Source Change Wavelength: 340.8 nm
S/R Exchange: Normal

[Attachment Properties]
Attachment: None

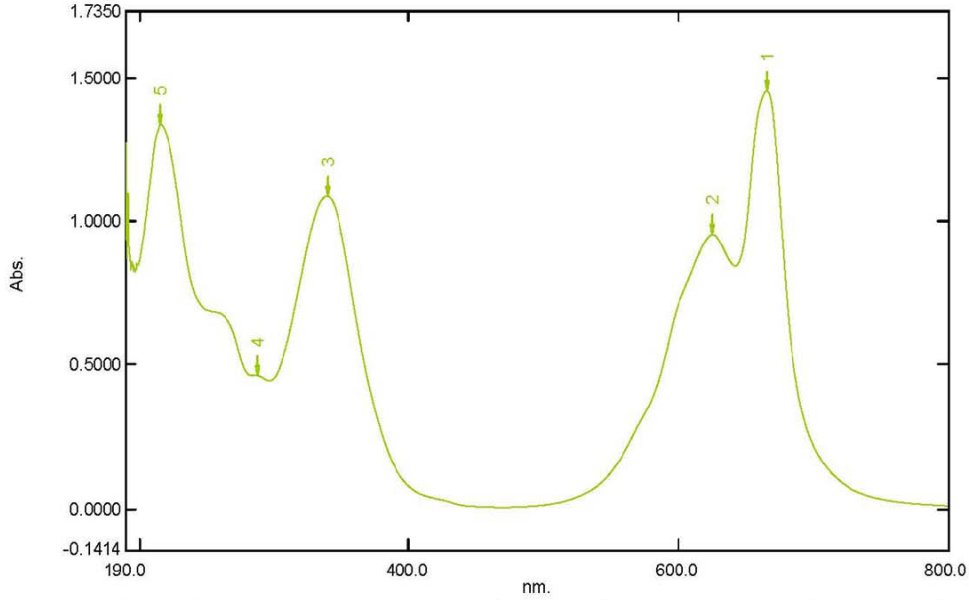
[Operation]
Threshold: 0.0010000
Points: 4
InterPolate: Disabled
Average: Disabled

[Sample Preparation Properties]
Weight: 0.1
Volume: 100
Dilution: 20 ppm
Path Length:
Additional Information:

Spectrum Peak Pick Report

04-04-2019 04:00:36 PM

Data Set: TURQ BLUE M5G B-2018-195 40PPM - RawData



[Measurement Properties]

Wavelength Range (nm.): 190.0 to 800.0
 Scan Speed: Fast
 Sampling Interval: 0.5
 Auto Sampling Interval: Enabled
 Scan Mode: Single

| No. | P/V | Wavelength | Abs. | Description |
|-----|-----|------------|--------|-------------|
| 1 | ● | 666.0 | 1.4560 | |
| 2 | ● | 625.5 | 0.9563 | |
| 3 | ● | 339.5 | 1.0887 | |
| 4 | ● | 287.0 | 0.4635 | |
| 5 | ● | 215.5 | 1.3401 | |

[Instrument Properties]

Instrument Type: UV-1900 Series
 Measuring Mode: Absorbance
 Slit Width: 1.0 nm
 Light Source Change Wavelength: 340.8 nm
 S/R Exchange: Normal

[Attachment Properties]

Attachment: None

[Operation]

Threshold: 0.0010000
 Points: 4
 InterPolate: Disabled
 Average: Disabled

[Sample Preparation Properties]

Weight: 0.1
 Volume: 100
 Dilution: 40 ppm
 Path Length:
 Additional Information: