



SCARLET RT

TOP DYEING - 2%



SPLIT - 3%



PENETRATION



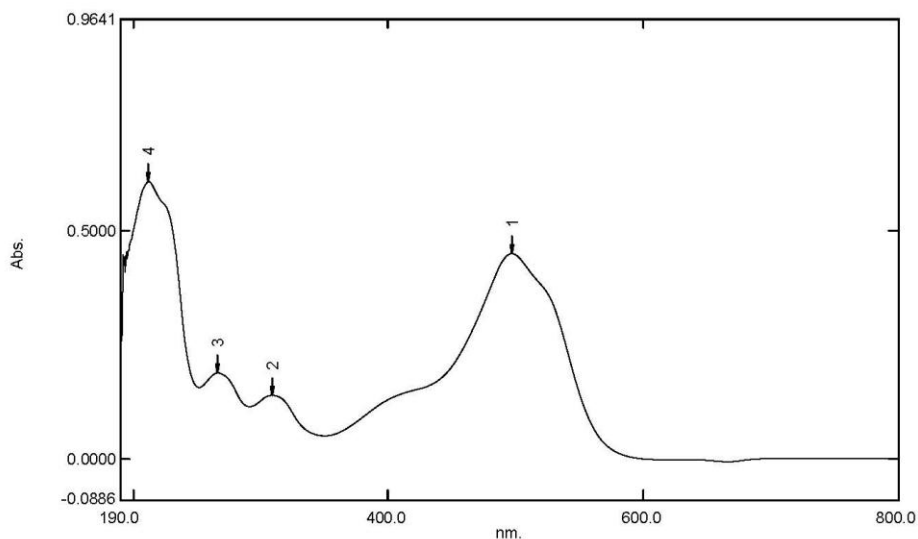
60° Solubility	Penetration	Light	F A S T N E S S					
			PERSPIRATION			WASHING		
			CS	SC	SW	CS	SC	SW
30	3	2	2	3	2	2	4	4

SCALE - 1 TO 5
 CS - COTTON + SILK
 SC - SPUN DIACETATE
 SW - SPUN WOOL

Spectrum Peak Pick Report

05-03-2019 12:58:54 PM

Data Set: SCARLET RT B-2018-94 10PPM - RawData



[Measurement Properties]
Wavelength Range (nm.): 190.0 to 800.0
Scan Speed: Fast
Sampling Interval: 0.5
Auto Sampling Interval: Enabled
Scan Mode: Single

No.	P/V	Wavelength	Abs.	Description
1	📍	497.5	0.4495	
2	📍	308.5	0.1386	
3	📍	266.0	0.1878	
4	📍	211.5	0.6079	

[Instrument Properties]
Instrument Type: UV-1900 Series
Measuring Mode: Absorbance
Slit Width: 1.0 nm
Light Source Change Wavelength: 340.8 nm
S/R Exchange: Normal

[Attachment Properties]
Attachment: None

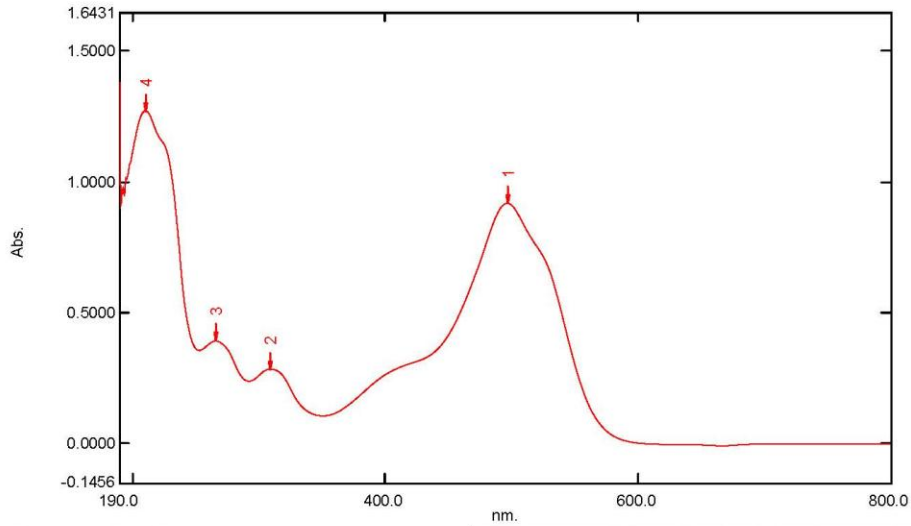
[Operation]
Threshold: 0.0010000
Points: 4
InterPolate: Disabled
Average: Disabled

[Sample Preparation Properties]
Weight: 0.1
Volume: 100
Dilution: 10 ppm
Path Length:
Additional Information:

Spectrum Peak Pick Report

05-03-2019 12:59:18 PM

Data Set: SCARLET RT B-2018-94 20PPM - RawData



[Measurement Properties]

Wavelength Range (nm.): 190.0 to 800.0
Scan Speed: Fast
Sampling Interval: 0.5
Auto Sampling Interval: Enabled
Scan Mode: Single

No.	P/V	Wavelength	Abs.	Description
1	⊕	497.0	0.9171	
2	⊕	309.5	0.2850	
3	⊕	266.0	0.3924	
4	⊕	210.0	1.2695	

[Instrument Properties]

Instrument Type: UV-1900 Series
Measuring Mode: Absorbance
Slit Width: 1.0 nm
Light Source Change Wavelength: 340.8 nm
S/R Exchange: Normal

[Attachment Properties]

Attachment: None

[Operation]

Threshold: 0.0010000
Points: 4
InterPolate: Disabled
Average: Disabled

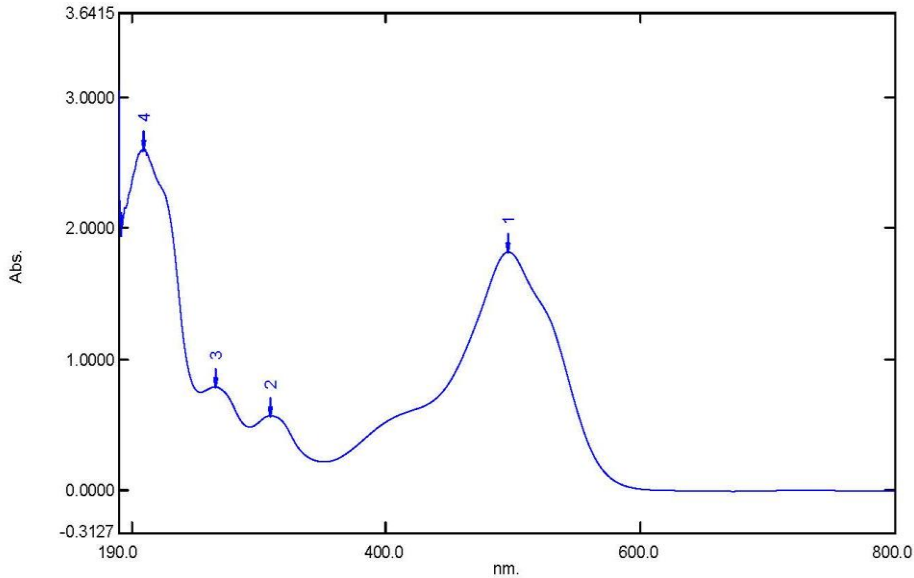
[Sample Preparation Properties]

Weight: 0.1
Volume: 100
Dilution: 20 ppm
Path Length:
Additional Information:

Spectrum Peak Pick Report

05-03-2019 12:59:39 PM

Data Set: SCARLET RT B-2018-94 40PPM - RawData



[Measurement Properties]

Wavelength Range (nm.): 190.0 to 800.0
Scan Speed: Fast
Sampling Interval: 0.5
Auto Sampling Interval: Enabled
Scan Mode: Single

No.	P/V	Wavelength	Abs.	Description
1	●	496.5	1.8200	
2	●	309.5	0.5696	
3	●	265.5	0.7920	
4	●	209.0	2.6030	

[Instrument Properties]

Instrument Type: UV-1900 Series
Measuring Mode: Absorbance
Slit Width: 1.0 nm
Light Source Change Wavelength: 340.8 nm
S/R Exchange: Normal

[Attachment Properties]

Attachment: None

[Operation]

Threshold: 0.0010000
Points: 4
InterPolate: Disabled
Average: Disabled

[Sample Preparation Properties]

Weight: 0.1
Volume: 100
Dilution: 40 ppm
Path Length:
Additional Information: