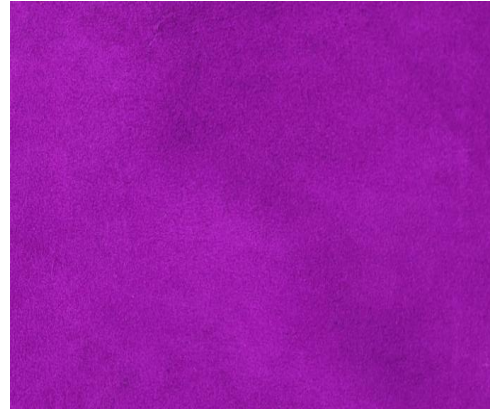


## RODAMINE B

TOP DYEING - 2%



SPLIT - 3%



### PENETRATION



| 60° Solubility | Penetration | Light | F A S T N E S S |     |     |         |    |     |
|----------------|-------------|-------|-----------------|-----|-----|---------|----|-----|
|                |             |       | PERSPIRATION    |     |     | WASHING |    |     |
|                |             |       | CS              | SC  | SW  | CS      | SC | SW  |
| 30             | 4           | 2-4   | 3-4             | 3-4 | 3-4 | 3       | 3  | 2-3 |

SCALE - 1 TO 5

CS - COTTON + SILK

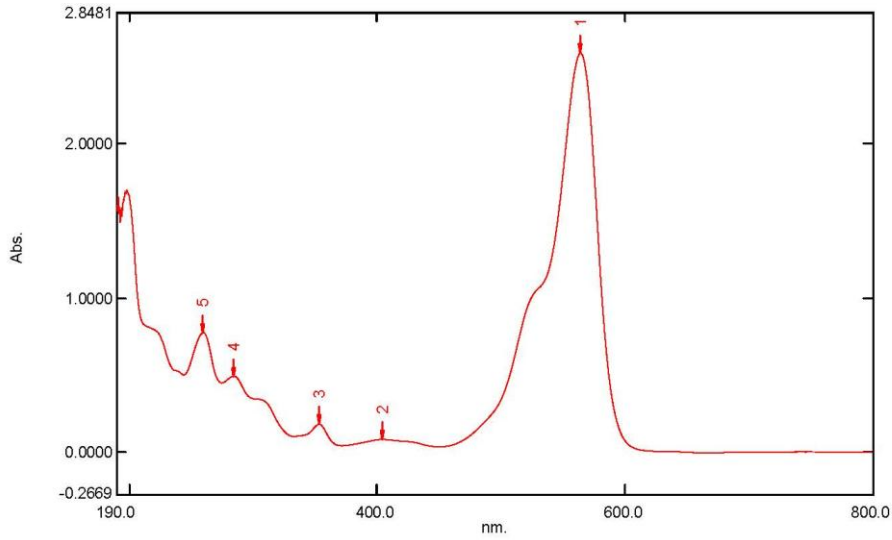
SC - SPUN DIACETATE

SW - SPUN WOOL

# Spectrum Peak Pick Report

05-04-2019 02:39:43 PM

Data Set: RODAMINE B B-2018-197 10PPM - RawData



[Measurement Properties]  
Wavelength Range (nm.): 190.0 to 800.0  
Scan Speed: Fast  
Sampling Interval: 0.5  
Auto Sampling Interval: Enabled  
Scan Mode: Single

[Instrument Properties]  
Instrument Type: UV-1900 Series  
Measuring Mode: Absorbance  
Slit Width: 1.0 nm  
Light Source Change Wavelength: 340.8 nm  
S/R Exchange: Normal

[Attachment Properties]  
Attachment: None

[Operation]  
Threshold: 0.0010000  
Points: 4  
InterPolate: Disabled  
Average: Disabled

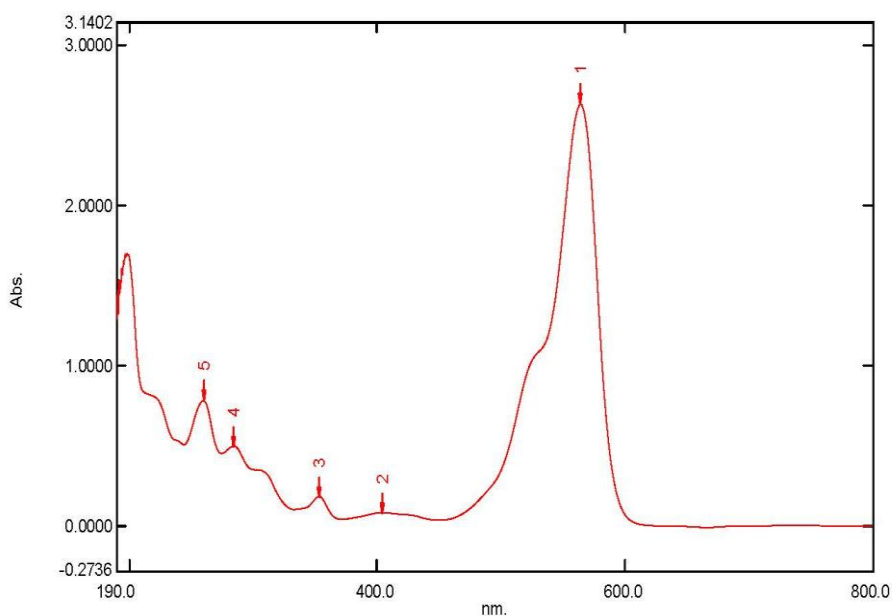
[Sample Preparation Properties]  
Weight: 0.1  
Volume: 100  
Dilution: 10 ppm  
Path Length:  
Additional Information:

| No. | P/V | Wavelength | Abs.   | Description |
|-----|-----|------------|--------|-------------|
| 1   | ●   | 564.5      | 2.5885 |             |
| 2   | ●   | 404.0      | 0.0822 |             |
| 3   | ●   | 353.0      | 0.1801 |             |
| 4   | ●   | 284.5      | 0.4927 |             |
| 5   | ●   | 259.5      | 0.7734 |             |

# Spectrum Peak Pick Report

05-04-2019 02:41:08 PM

Data Set: RODAMINE B B-2018-197 20PPM - RawData



[Measurement Properties]  
Wavelength Range (nm.): 190.0 to 800.0  
Scan Speed: Fast  
Sampling Interval: 0.5  
Auto Sampling Interval: Enabled  
Scan Mode: Single

[Instrument Properties]  
Instrument Type: UV-1900 Series  
Measuring Mode: Absorbance  
Slit Width: 1.0 nm  
Light Source Change Wavelength: 340.8 nm  
S/R Exchange: Normal

[Attachment Properties]  
Attachment: None

[Operation]  
Threshold: 0.0010000  
Points: 4  
InterPolate: Disabled  
Average: Disabled

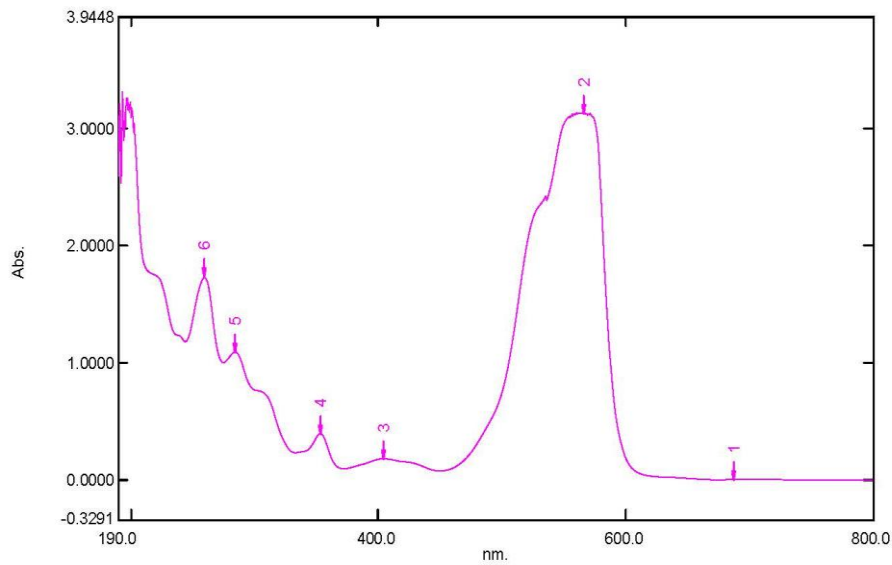
[Sample Preparation Properties]  
Weight: 0.1  
Volume: 100  
Dilution: 20 ppm  
Path Length:  
Additional Information:

| No. | P/V | Wavelength | Abs.   | Description |
|-----|-----|------------|--------|-------------|
| 1   | ①   | 564.5      | 2.6325 |             |
| 2   | ②   | 404.0      | 0.0833 |             |
| 3   | ③   | 353.0      | 0.1834 |             |
| 4   | ④   | 284.5      | 0.4990 |             |
| 5   | ⑤   | 260.0      | 0.7822 |             |

# Spectrum Peak Pick Report

05-04-2019 02:50:23 PM

Data Set: RODAMINE B B-2018-197 40PPM - RawData



[Measurement Properties]  
Wavelength Range (nm.): 190.0 to 800.0  
Scan Speed: Fast  
Sampling Interval: 0.5  
Auto Sampling Interval: Enabled  
Scan Mode: Single

[Instrument Properties]  
Instrument Type: UV-1900 Series  
Measuring Mode: Absorbance  
Slit Width: 1.0 nm  
Light Source Change Wavelength: 340.8 nm  
S/R Exchange: Normal

[Attachment Properties]  
Attachment: None

[Operation]  
Threshold: 0.0010000  
Points: 4  
InterPolate: Disabled  
Average: Disabled

[Sample Preparation Properties]  
Weight: 0.1  
Volume: 100  
Dilution: 40 ppm  
Path Length:  
Additional Information:

| No. | P/V | Wavelength | Abs.   | Description |
|-----|-----|------------|--------|-------------|
| 1   | ●   | 688.0      | 0.0044 |             |
| 2   | ●   | 566.0      | 3.1283 |             |
| 3   | ●   | 404.5      | 0.1816 |             |
| 4   | ●   | 353.5      | 0.3967 |             |
| 5   | ●   | 284.5      | 1.0915 |             |
| 6   | ●   | 259.5      | 1.7257 |             |