



## RED BC

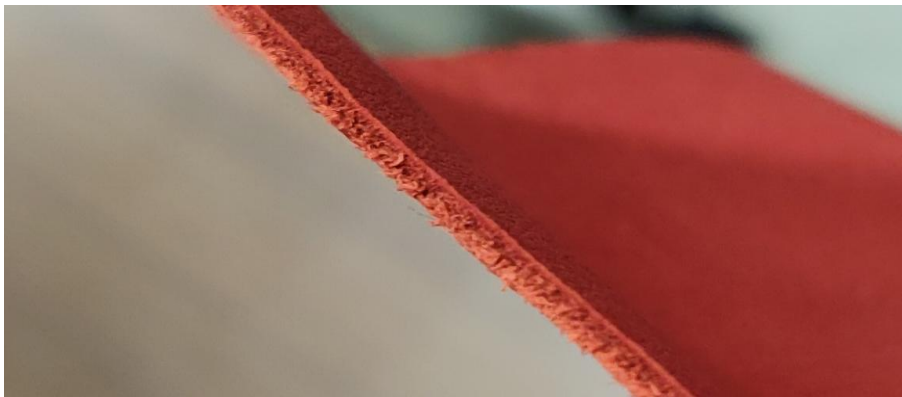
TOP DYEING - 2%



SPLIT - 3%



## PENETRATION



60° Solubility	Penetration	Light	F A S T N E S S					
			PERSPIRATION			WASHING		
			CS	SC	SW	CS	SC	SW
60	3	2-3	2-3	2	3	2	2	3-4

SCALE - 1 TO 5

CS - COTTON + SILK

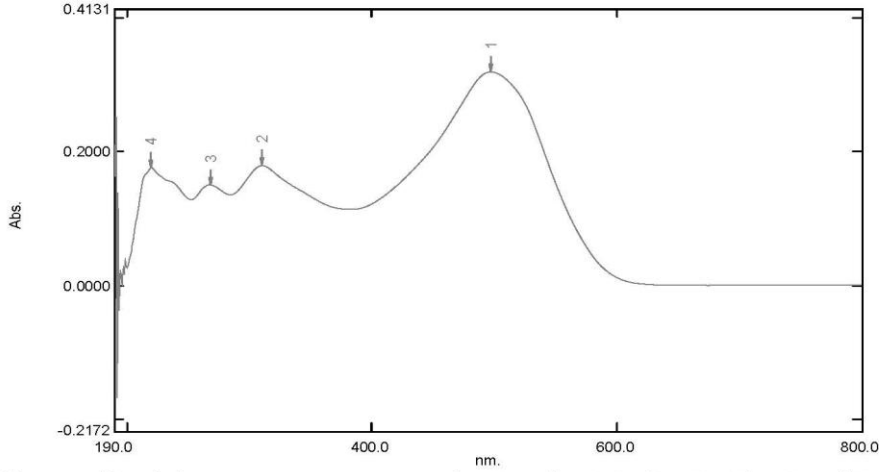
SC - SPUN DIACETATE

SW - SPUN WOOL

# Spectrum Peak Pick Report

05-03-2019 04:06:20 PM

Data Set: RED BC B-2018-102 10PPM - RawData



[Measurement Properties]  
Wavelength Range (nm.): 190.0 to 800.0  
Scan Speed: Fast  
Sampling Interval: 0.5  
Auto Sampling Interval: Enabled  
Scan Mode: Single

No.	P/V	Wavelength	Abs.	Description
1	🟢	497.5	0.3194	
2	🟢	310.5	0.1792	
3	🟢	268.0	0.1506	
4	🟢	220.0	0.1762	

[Instrument Properties]  
Instrument Type: UV-1900 Series  
Measuring Mode: Absorbance  
Slit Width: 1.0 nm  
Light Source Change Wavelength: 340.8 nm  
S/R Exchange: Normal

[Attachment Properties]  
Attachment: None

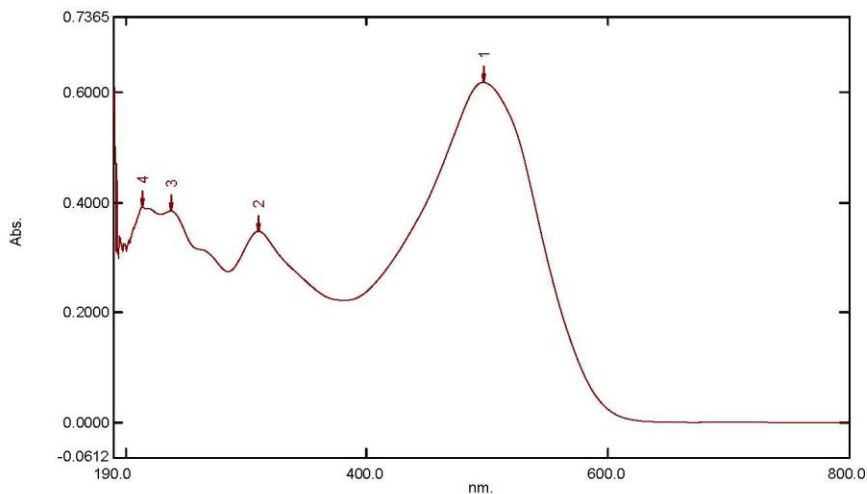
[Operation]  
Threshold: 0.0010000  
Points: 4  
InterPolate: Disabled  
Average: Disabled

[Sample Preparation Properties]  
Weight: 0.1  
Volume: 100  
Dilution: 10 ppm  
Path Length:  
Additional Information:

# Spectrum Peak Pick Report

05-03-2019 04:04:48 PM

Data Set: RED BC B-2018-102 20PPM - RawData



[Measurement Properties]  
Wavelength Range (nm.): 190.0 to 800.0  
Scan Speed: Fast  
Sampling Interval: 0.5  
Auto Sampling Interval: Enabled  
Scan Mode: Single

No.	P/V	Wavelength	Abs.	Description
1	●	497.0	0.6179	
2	●	310.5	0.3477	
3	●	237.5	0.3842	
4	●	214.0	0.3926	

[Instrument Properties]  
Instrument Type: UV-1900 Series  
Measuring Mode: Absorbance  
Slit Width: 1.0 nm  
Light Source Change Wavelength: 340.8 nm  
S/R Exchange: Normal

[Attachment Properties]  
Attachment: None

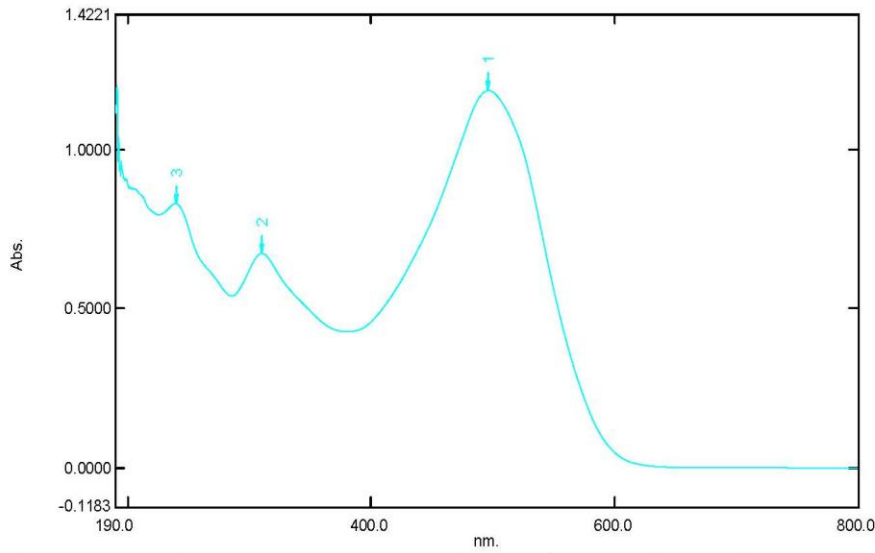
[Operation]  
Threshold: 0.0010000  
Points: 4  
InterPolate: Disabled  
Average: Disabled

[Sample Preparation Properties]  
Weight: 0.1  
Volume: 100  
Dilution: 20 ppm  
Path Length:  
Additional Information:

# Spectrum Peak Pick Report

05-03-2019 03:58:54 PM

Data Set: RED BC B-2018-102 40PPM - RawData



[Measurement Properties]

Wavelength Range (nm.): 190.0 to 800.0  
 Scan Speed: Fast  
 Sampling Interval: 0.5  
 Auto Sampling Interval: Enabled  
 Scan Mode: Single

No.	P/V	Wavelength	Abs.	Description
1	⬆	496.5	1.1837	
2	⬆	310.0	0.6737	
3	⬆	239.5	0.8293	

[Instrument Properties]

Instrument Type: UV-1900 Series  
 Measuring Mode: Absorbance  
 Slit Width: 1.0 nm  
 Light Source Change Wavelength: 340.8 nm  
 S/R Exchange: Normal

[Attachment Properties]

Attachment: None

[Operation]

Threshold: 0.0010000  
 Points: 4  
 InterPolate: Disabled  
 Average: Disabled

[Sample Preparation Properties]

Weight: 0.1  
 Volume: 100  
 Dilution: 40 ppm  
 Path Length:  
 Additional Information: