

**RED A**

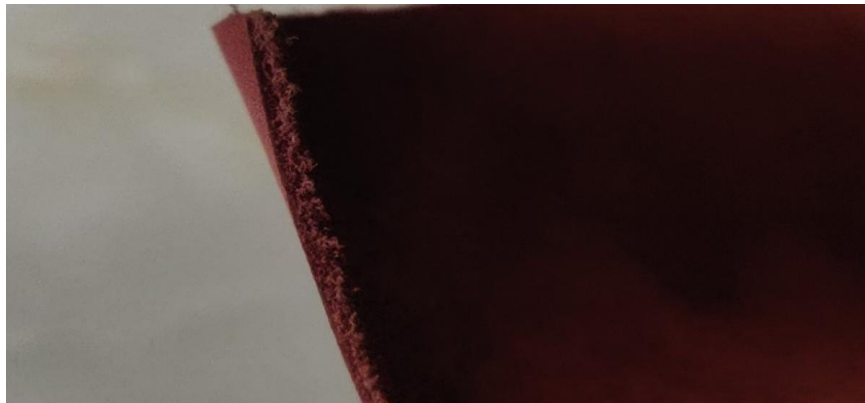
**TOP DYEING - 2%**



**SPLIT - 3%**



**PENETRATION**



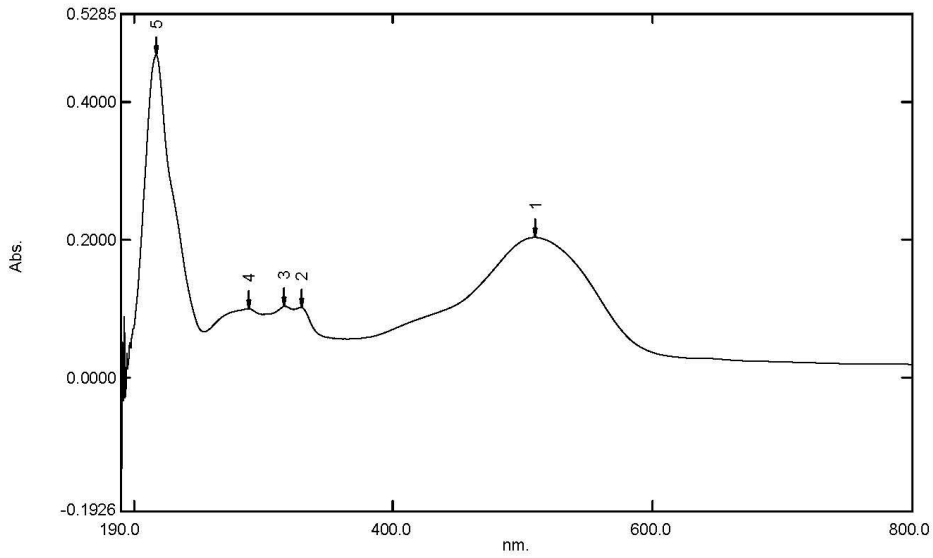
60° Solubility	Penetration	Light	<b>F A S T N E S S</b>					
			PERSPIRATION			WASHING		
			CS	SC	SW	CS	SC	SW
40	4	2	3-4	3-4	2	3-4	3-4	2

SCALE - 1 TO 5  
 CS - COTTON + SILK  
 SC - SPUN DIACETATE  
 SW - SPUN WOOL

# Spectrum Peak Pick Report

05-03-2019 03:39:36 PM

Data Set: RED A B-2018-99 10PPM - RawData



[Measurement Properties]  
Wavelength Range (nm.): 190.0 to 800.0  
Scan Speed: Fast  
Sampling Interval: 0.5  
Auto Sampling Interval: Enabled  
Scan Mode: Single

No.	P/V	Wavelength	Abs.	Description
1	●	510.0	0.2035	
2	●	329.0	0.1022	
3	●	316.0	0.1034	
4	●	288.5	0.0998	
5	●	217.0	0.4684	

[Instrument Properties]  
Instrument Type: UV-1900 Series  
Measuring Mode: Absorbance  
Slit Width: 1.0 nm  
Light Source Change Wavelength: 340.8 nm  
S/R Exchange: Normal

[Attachment Properties]  
Attachment: None

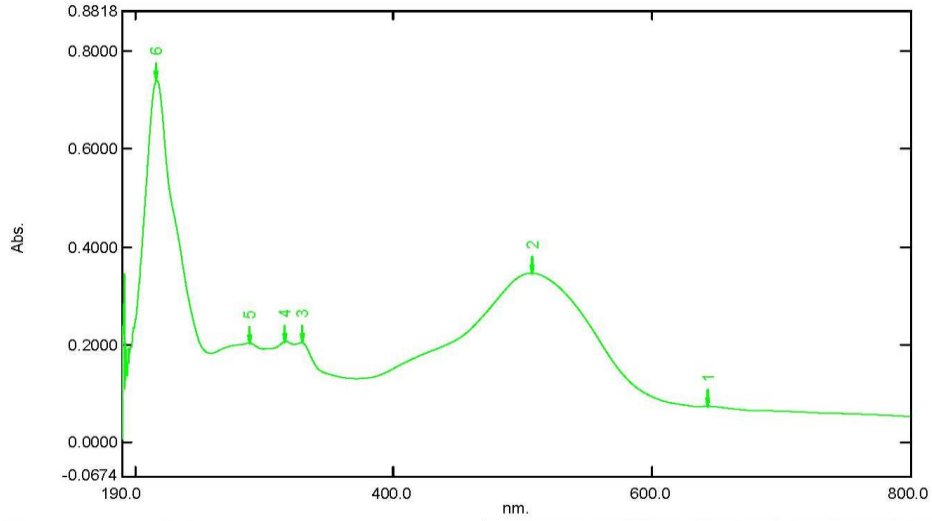
[Operation]  
Threshold: 0.0010000  
Points: 4  
Interpolate: Disabled  
Average: Disabled

[Sample Preparation Properties]  
Weight: 0.1  
Volume: 100  
Dilution: 10 ppm  
Path Length:  
Additional Information:

# Spectrum Peak Pick Report

05-03-2019 03:44:47 PM

Data Set: RED A B-2018-99 20PPM - RawData



[Measurement Properties]  
Wavelength Range (nm.): 190.0 to 800.0  
Scan Speed: Fast  
Sampling Interval: 0.5  
Auto Sampling Interval: Enabled  
Scan Mode: Single

[Instrument Properties]  
Instrument Type: UV-1900 Series  
Measuring Mode: Absorbance  
Slit Width: 1.0 nm  
Light Source Change Wavelength: 340.8 nm  
S/R Exchange: Normal

[Attachment Properties]  
Attachment: None

[Operation]  
Threshold: 0.0010000  
Points: 4  
InterPolate: Disabled  
Average: Disabled

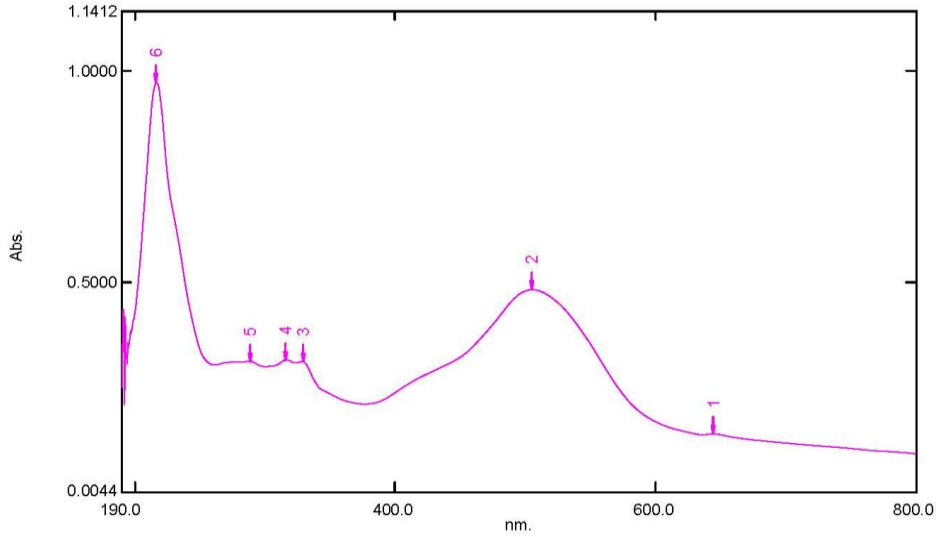
[Sample Preparation Properties]  
Weight: 0.1  
Volume: 100  
Dilution: 20 ppm  
Path Length:  
Additional Information:

No.	P/V	Wavelength	Abs.	Description
1	●	644.0	0.0739	
2	●	507.5	0.3460	
3	●	329.0	0.2041	
4	●	316.0	0.2061	
5	●	288.5	0.2027	
6	●	216.5	0.7406	

# Spectrum Peak Pick Report

05-03-2019 03:47:03 PM

Data Set: RED A B-2018-99 40PPM - RawData



[Measurement Properties]  
 Wavelength Range (nm.): 190.0 to 800.0  
 Scan Speed: Fast  
 Sampling Interval: 0.5  
 Auto Sampling Interval: Enabled  
 Scan Mode: Single

[Instrument Properties]  
 Instrument Type: UV-1900 Series  
 Measuring Mode: Absorbance  
 Slit Width: 1.0 nm  
 Light Source Change Wavelength: 340.8 nm  
 S/R Exchange: Normal

[Attachment Properties]  
 Attachment: None

[Operation]  
 Threshold: 0.0010000  
 Points: 4  
 InterPolate: Disabled  
 Average: Disabled

[Sample Preparation Properties]  
 Weight: 0.1  
 Volume: 100  
 Dilution: 40 ppm  
 Path Length:  
 Additional Information:

No.	P/V	Wavelength	Abs.	Description
1	●	645.0	0.1396	
2	●	505.5	0.4811	
3	●	329.0	0.3110	
4	●	316.0	0.3152	
5	●	288.5	0.3117	
6	●	216.5	0.9722	