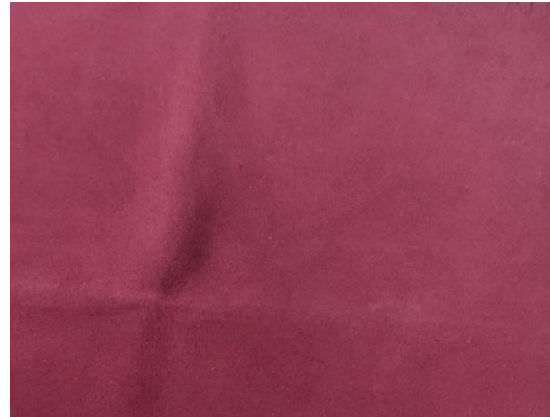




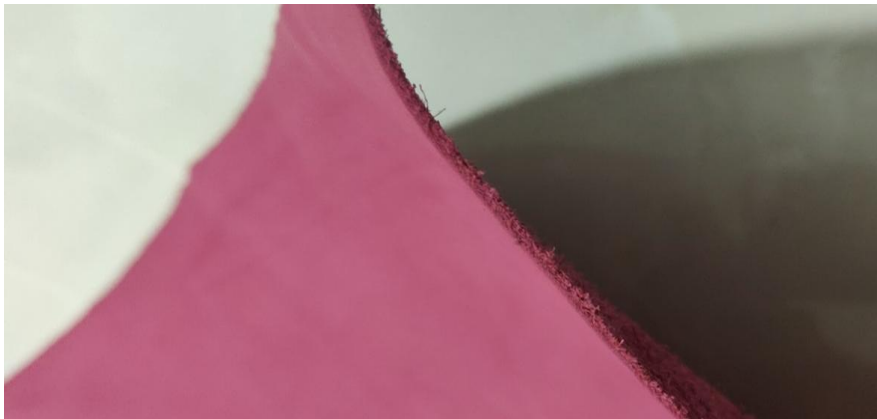
RED 5BL

TOP DYEING - 2%

SPLIT - 3%



PENETRATION



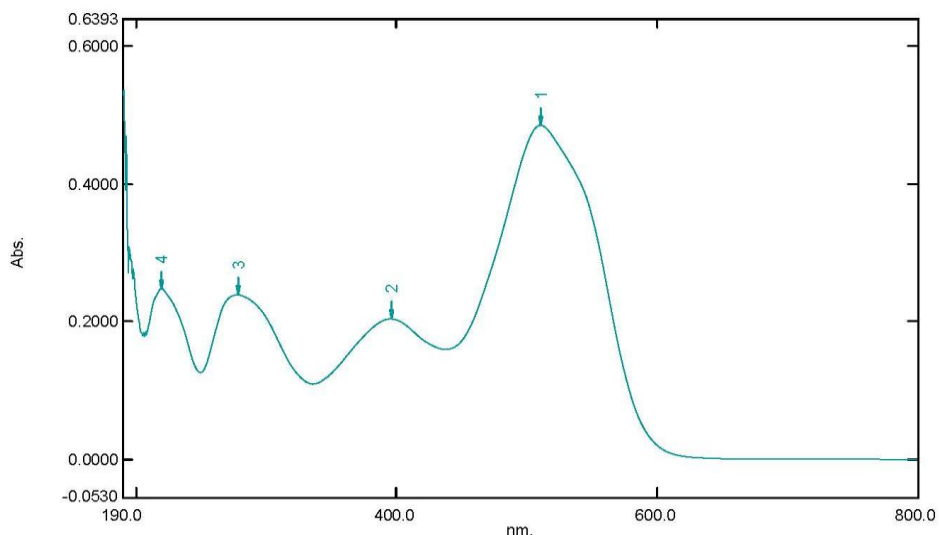
60° Solubility	Penetration	Light	F A S T N E S S					
			PERSPIRATION			WASHING		
			CS	SC	SW	CS	SC	SW
50	3	3	3-4	3	3	2	3-4	3

SCALE - 1 TO 5
 CS - COTTON + SILK
 SC - SPUN DIACETATE
 SW - SPUN WOOL

Spectrum Peak Pick Report

05-03-2019 04:07:31 PM

Data Set: RED 5BL B-2018-101 10PPM - RawData



[Measurement Properties]
Wavelength Range (nm.): 190.0 to 800.0
Scan Speed: Fast
Sampling Interval: 0.5
Auto Sampling Interval: Enabled
Scan Mode: Single

No.	P/V	Wavelength	Abs.	Description
1	📍	510.5	0.4852	
2	📍	396.0	0.2045	
3	📍	278.5	0.2392	
4	📍	220.0	0.2487	

[Instrument Properties]
Instrument Type: UV-1900 Series
Measuring Mode: Absorbance
Slit Width: 1.0 nm
Light Source Change Wavelength: 340.8 nm
S/R Exchange: Normal

[Attachment Properties]
Attachment: None

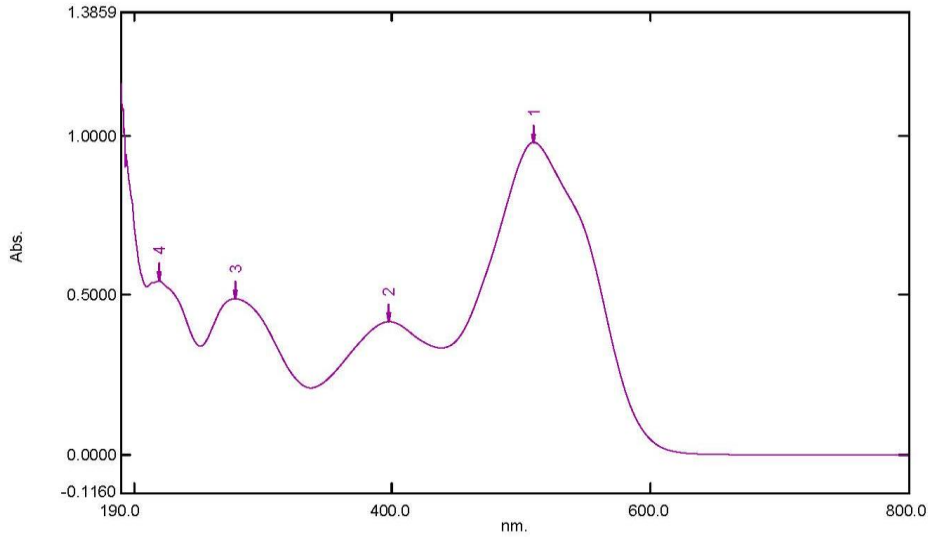
[Operation]
Threshold: 0.0010000
Points: 4
InterPolate: Disabled
Average: Disabled

[Sample Preparation Properties]
Weight: 0.1
Volume: 100
Dilution: 10 ppm
Path Length:
Additional Information:

Spectrum Peak Pick Report

05-03-2019 04:02:37 PM

Data Set: RED 5BL B-2018-101 20PPM - RawData



[Measurement Properties]
Wavelength Range (nm.): 190.0 to 800.0
Scan Speed: Fast
Sampling Interval: 0.5
Auto Sampling Interval: Enabled
Scan Mode: Single

No.	P/V	Wavelength	Abs.	Description
1	●	510.0	0.9785	
2	●	398.0	0.4170	
3	●	279.0	0.4887	
4	●	219.5	0.5442	

[Instrument Properties]
Instrument Type: UV-1900 Series
Measuring Mode: Absorbance
Slit Width: 1.0 nm
Light Source Change Wavelength: 340.8 nm
S/R Exchange: Normal

[Attachment Properties]
Attachment: None

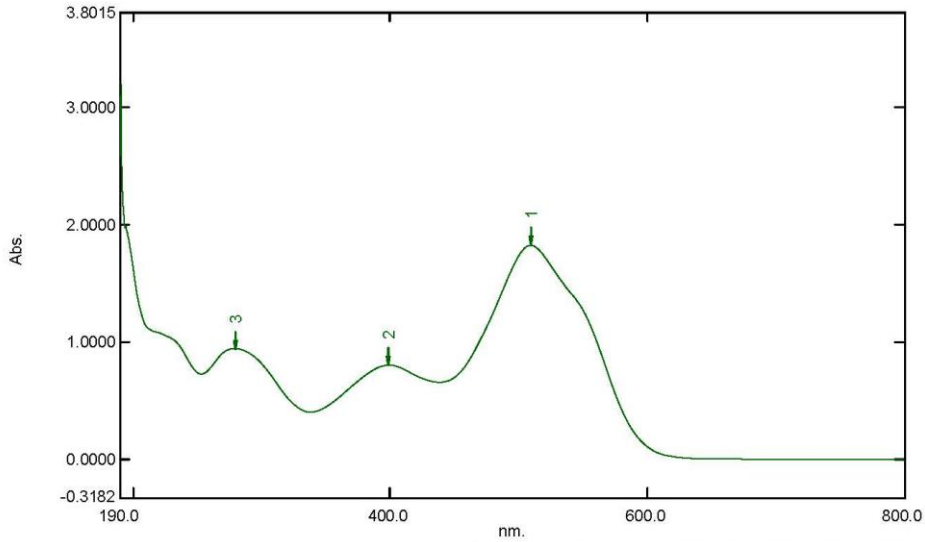
[Operation]
Threshold: 0.0010000
Points: 4
InterPolate: Disabled
Average: Disabled

[Sample Preparation Properties]
Weight: 0.1
Volume: 100
Dilution: 20 ppm
Path Length:
Additional Information:

Spectrum Peak Pick Report

05-03-2019 04:00:45 PM

Data Set: RED 5BL B-2018-101 40PPM - RawData



[Measurement Properties]
Wavelength Range (nm.): 190.0 to 800.0
Scan Speed: Fast
Sampling Interval: 0.5
Auto Sampling Interval: Enabled
Scan Mode: Single

No.	P/V	Wavelength	Abs.	Description
1	🟢	510.0	1.8211	
2	🟢	399.0	0.8017	
3	🟢	279.5	0.9433	

[Instrument Properties]
Instrument Type: UV-1900 Series
Measuring Mode: Absorbance
Slit Width: 1.0 nm
Light Source Change Wavelength: 340.8 nm
S/R Exchange: Normal

[Attachment Properties]
Attachment: None

[Operation]
Threshold: 0.0010000
Points: 4
InterPolate: Disabled
Average: Disabled

[Sample Preparation Properties]
Weight: 0.1
Volume: 100
Dilution: 40 ppm
Path Length:
Additional Information: