



ORANGE II

TOP DYEING - 2%



SPLIT - 3%



PENETRATION



60° Solubility	Penetration	Light	F A S T N E S S					
			PERSPIRATION			WASHING		
			CS	SC	SW	CS	SC	SW
100	6	3	2	2	2	2	3	3

SCALE - 1 TO 5

CS - COTTON + SILK

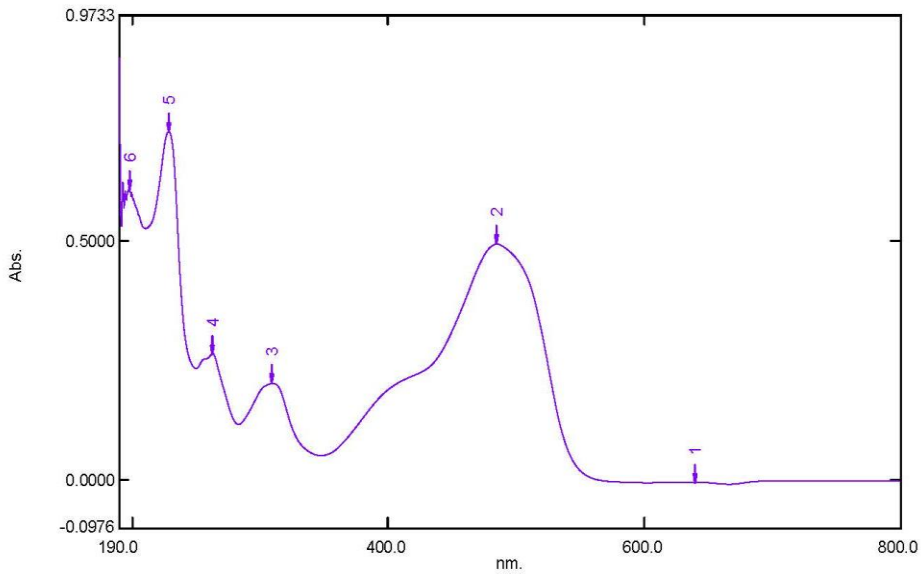
SC - SPUN DIACETATE

SW - SPUN WOOL

Spectrum Peak Pick Report

05-03-2019 12:49:47 PM

Data Set: ORANGE II B-2018-98 10PPM - RawData



[Measurement Properties]

Wavelength Range (nm.): 190.0 to 800.0
 Scan Speed: Fast
 Sampling Interval: 0.5
 Auto Sampling Interval: Enabled
 Scan Mode: Single

No.	P/V	Wavelength	Abs.	Description
1	⊕	640.5	-0.0043	
2	⊕	485.0	0.4942	
3	⊕	309.5	0.2028	
4	⊕	262.5	0.2650	
5	⊕	228.5	0.7297	
6	⊕	197.5	0.6086	

[Instrument Properties]

Instrument Type: UV-1900 Series
 Measuring Mode: Absorbance
 Slit Width: 1.0 nm
 Light Source Change Wavelength: 340.8 nm
 S/R Exchange: Normal

[Attachment Properties]

Attachment: None

[Operation]

Threshold: 0.0010000
 Points: 4
 InterPolate: Disabled
 Average: Disabled

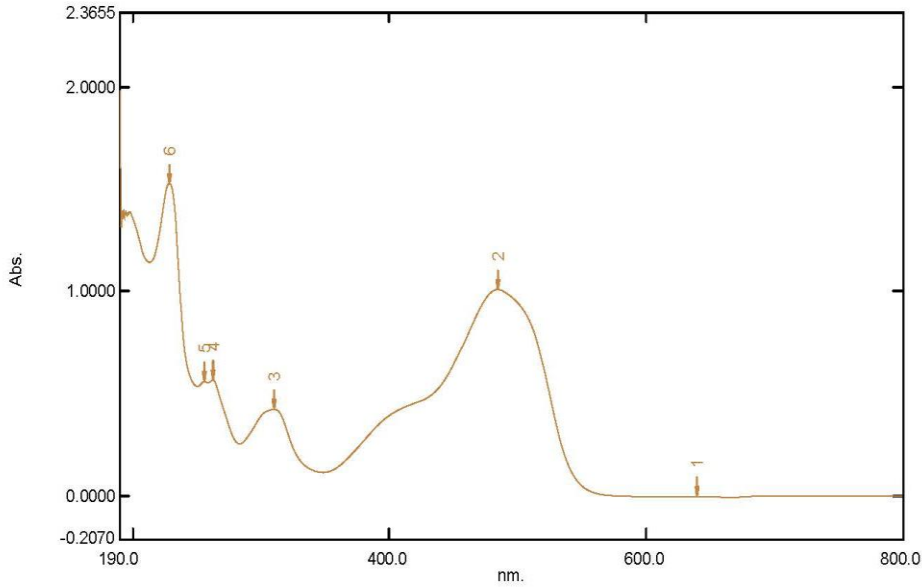
[Sample Preparation Properties]

Weight: 0.1
 Volume: 100
 Dilution: 10 ppm
 Path Length:
 Additional Information:

Spectrum Peak Pick Report

05-03-2019 12:50:20 PM

Data Set: ORANGE II B-2018-98 20PPM - RawData



[Measurement Properties]
Wavelength Range (nm.):
Scan Speed:
Sampling Interval:
Auto Sampling Interval:
Scan Mode:

190.0 to 800.0
Fast
0.5
Enabled
Single

[Instrument Properties]

Instrument Type: UV-1900 Series
Measuring Mode: Absorbance
Slit Width: 1.0 nm
Light Source Change Wavelength: 340.8 nm
S/R Exchange: Normal

[Attachment Properties]

Attachment: None

[Operation]

Threshold: 0.0010000
Points: 4
InterPolate: Disabled
Average: Disabled

[Sample Preparation Properties]

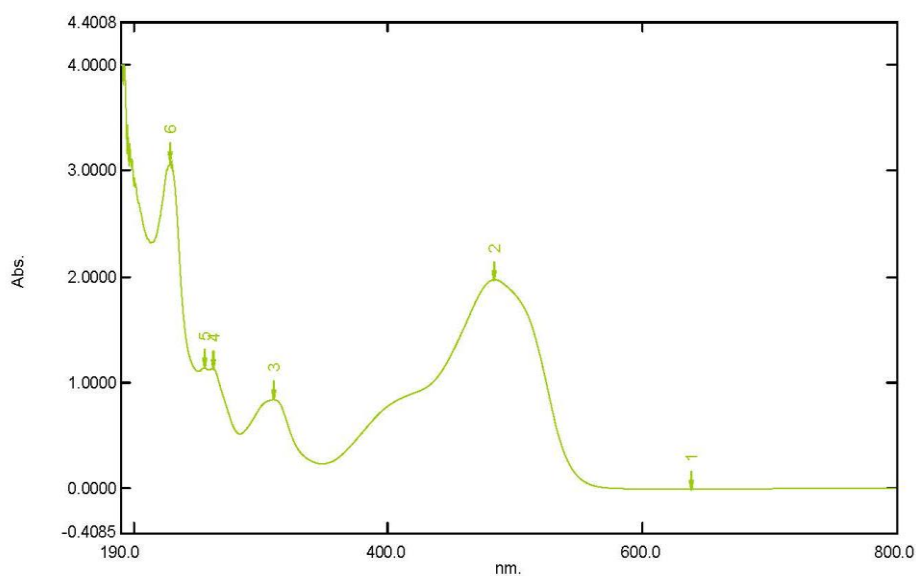
Weight: 0.1
Volume: 100
Dilution: 20 ppm
Path Length:
Additional Information:

No.	P/V	Wavelength	Abs.	Description
1	📍	640.0	-0.0038	
2	📍	484.5	1.0095	
3	📍	310.0	0.4229	
4	📍	262.5	0.5659	
5	📍	255.5	0.5587	
6	📍	228.5	1.5296	

Spectrum Peak Pick Report

05-03-2019 12:53:23 PM

Data Set: ORANGE II B-2018-98 40PPM - RawData



[Measurement Properties]
 Wavelength Range (nm.): 190.0 to 800.0
 Scan Speed: Fast
 Sampling Interval: 0.5
 Auto Sampling Interval: Enabled
 Scan Mode: Single

[Instrument Properties]
 Instrument Type: UV-1900 Series
 Measuring Mode: Absorbance
 Slit Width: 1.0 nm
 Light Source Change Wavelength: 340.8 nm
 S/R Exchange: Normal

[Attachment Properties]
 Attachment: None

[Operation]
 Threshold: 0.0010000
 Points: 4
 InterPolate: Disabled
 Average: Disabled

[Sample Preparation Properties]
 Weight: 0.1
 Volume: 100
 Dilution: 40 ppm
 Path Length:
 Additional Information:

No.	P/V	Wavelength	Abs.	Description
1	●	639.5	-0.0035	
2	●	484.0	1.9738	
3	●	310.5	0.8397	
4	●	262.0	1.1352	
5	●	255.5	1.1390	
6	●	228.5	3.0859	