

**OLIVE BROWN K**

**TOP DYEING - 2%**

**SPLIT - 3%**



**PENETRATION**



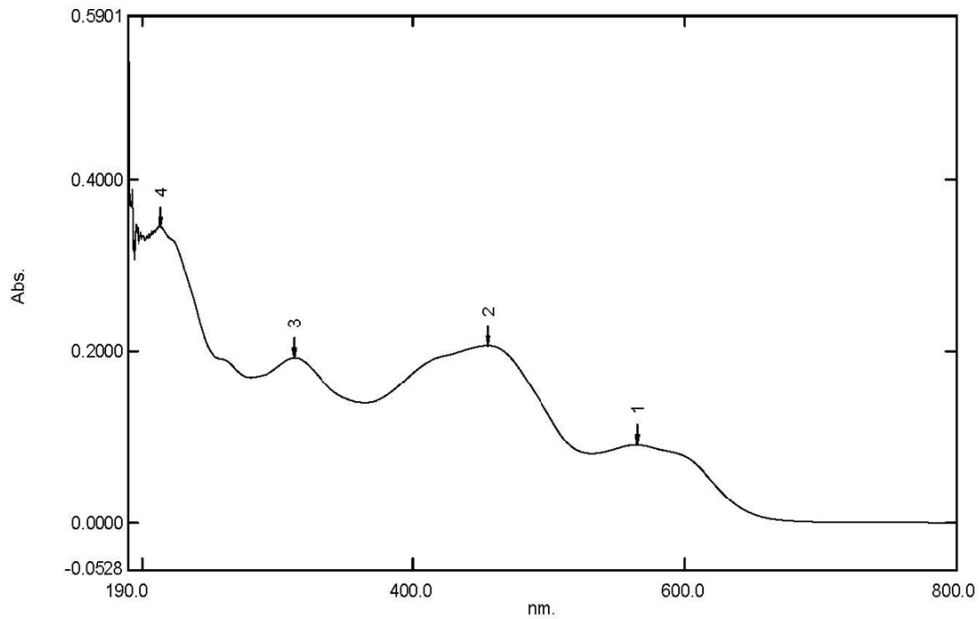
60° Solubility	Penetration	Light	F A S T N E S S					
			PERSPIRATION			WASHING		
			CS	SC	SW	CS	SC	SW
40	3	5-6	4-5	3	3	4	2-3	4

SCALE - 1 TO 5  
 CS - COTTON + SILK  
 SC - SPUN DIACETATE  
 SW - SPUN WOOL

# Spectrum Peak Pick Report

09-03-2019 01:53:20 PM

Data Set: OLIVE BRN K B-2018-118 10PPM - RawData



[Measurement Properties]

Wavelength Range (nm.): 190.0 to 800.0  
Scan Speed: Fast  
Sampling Interval: 0.5  
Auto Sampling Interval: Enabled  
Scan Mode: Single

No.	P/V	Wavelength	Abs.	Description
1	⊕	565.0	0.0909	
2	⊕	455.0	0.2065	
3	⊕	312.5	0.1924	
4	⊕	213.5	0.3456	

[Instrument Properties]

Instrument Type: UV-1900 Series  
Measuring Mode: Absorbance  
Slit Width: 1.0 nm  
Light Source Change Wavelength: 340.8 nm  
S/R Exchange: Normal

[Attachment Properties]

Attachment: None

[Operation]

Threshold: 0.0010000  
Points: 4  
InterPolate: Disabled  
Average: Disabled

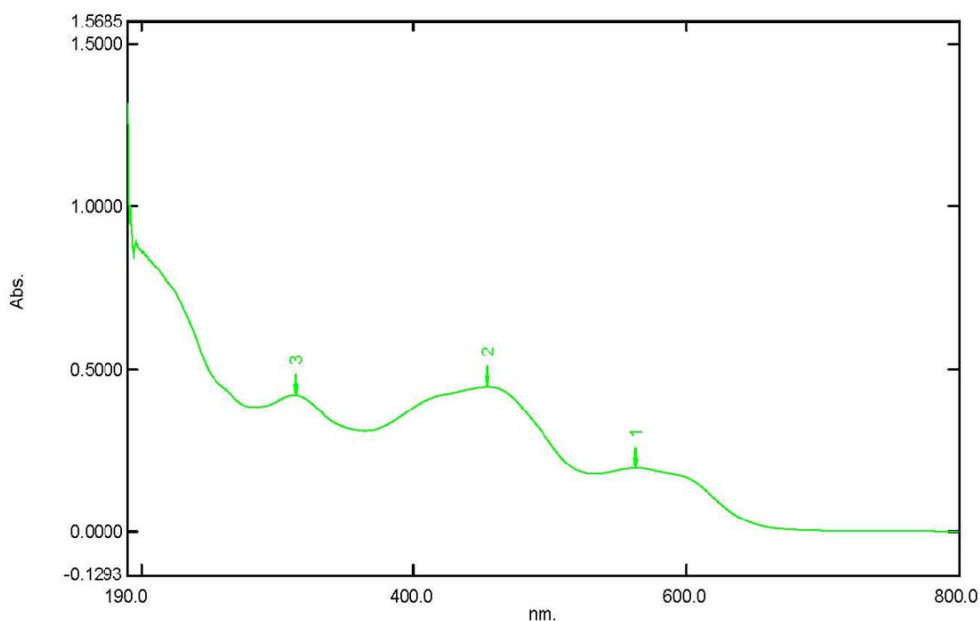
[Sample Preparation Properties]

Weight: 0.1  
Volume: 100  
Dilution: 10 ppm  
Path Length:  
Additional Information:

# Spectrum Peak Pick Report

09-03-2019 01:59:08 PM

Data Set: OLIVE BRN K B-2018-118 20PPM - RawData



[Measurement Properties]  
Wavelength Range (nm.): 190.0 to 800.0  
Scan Speed: Fast  
Sampling Interval: 0.5  
Auto Sampling Interval: Enabled  
Scan Mode: Single

No.	P/V	Wavelength	Abs.	Description
1	⊕	563.0	0.1971	
2	⊕	454.5	0.4467	
3	⊕	313.5	0.4216	

[Instrument Properties]  
Instrument Type: UV-1900 Series  
Measuring Mode: Absorbance  
Slit Width: 1.0 nm  
Light Source Change Wavelength: 340.8 nm  
S/R Exchange: Normal

[Attachment Properties]  
Attachment: None

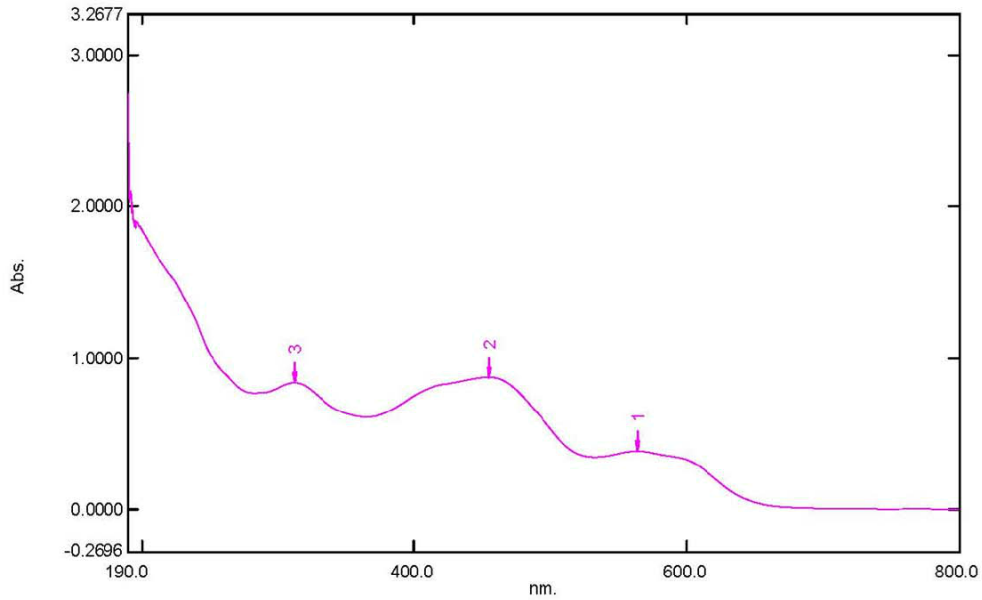
[Operation]  
Threshold: 0.0010000  
Points: 4  
InterPolate: Disabled  
Average: Disabled

[Sample Preparation Properties]  
Weight: 0.1  
Volume: 100  
Dilution: 20 ppm  
Path Length:  
Additional Information:

# Spectrum Peak Pick Report

09-03-2019 02:01:24 PM

Data Set: OLIVE BRN K B-2018-118 40PPM - RawData



[Measurement Properties]  
Wavelength Range (nm.): 190.0 to 800.0  
Scan Speed: Fast  
Sampling Interval: 0.5  
Auto Sampling Interval: Enabled  
Scan Mode: Single

No.	P/V	Wavelength	Abs.	Description
1	⊕	564.0	0.3849	
2	⊕	455.0	0.8722	
3	⊕	313.0	0.8365	

[Instrument Properties]  
Instrument Type: UV-1900 Series  
Measuring Mode: Absorbance  
Slit Width: 1.0 nm  
Light Source Change Wavelength: 340.8 nm  
S/R Exchange: Normal

[Attachment Properties]  
Attachment: None

[Operation]  
Threshold: 0.0010000  
Points: 4  
InterPolate: Disabled  
Average: Disabled

[Sample Preparation Properties]  
Weight: 0.1  
Volume: 100  
Dilution: 40 ppm  
Path Length:  
Additional Information: