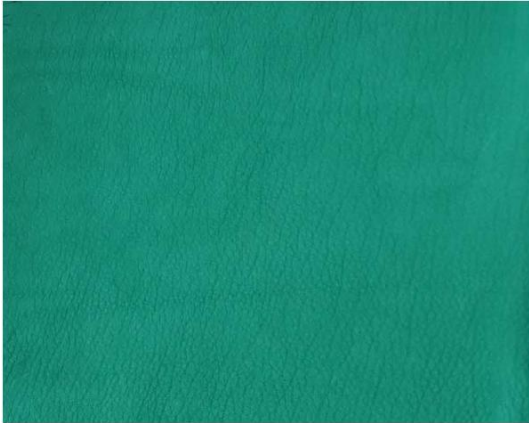
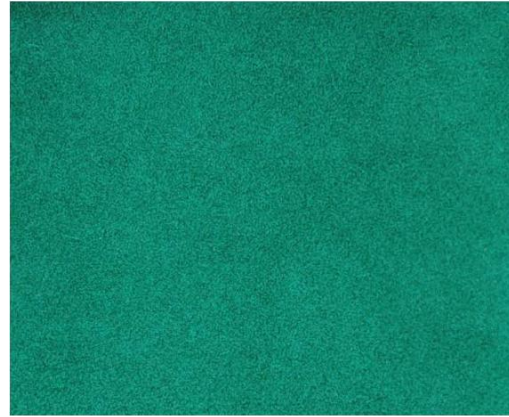


GREEN V

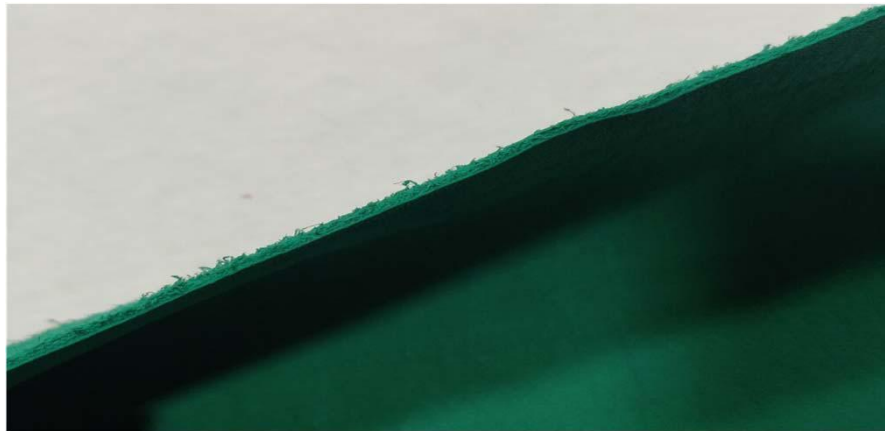
TOP DYEING - 2%



SPLIT - 3%



PENETRATION



60° Solubility	Penetration	Light	F A S T N E S S					
			PERSPIRATION			WASHING		
			CS	SC	SW	CS	SC	SW
40	6	2	3-4	3-4	3-4	2	3	2

SCALE - 1 TO 5

CS - COTTON + SILK

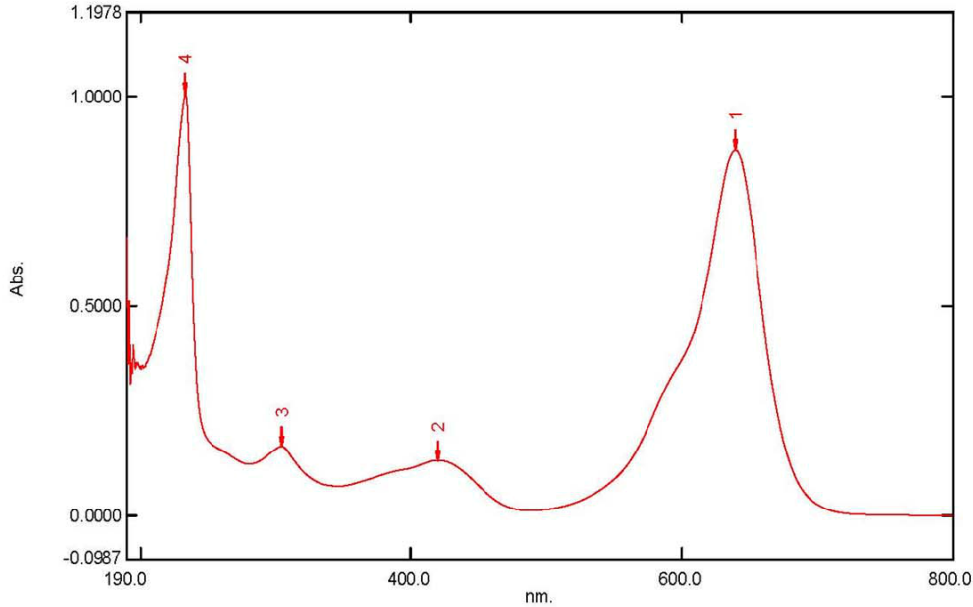
SC - SPUN DIACETATE

SW - SPUN WOOL

Spectrum Peak Pick Report

04-04-2019 03:20:09 PM

Data Set: GREEN V B-2018-192 10PPM - RawData



[Measurement Properties]

Wavelength Range (nm.): 190.0 to 800.0
Scan Speed: Fast
Sampling Interval: 0.5
Auto Sampling Interval: Enabled
Scan Mode: Single

No.	P/V	Wavelength	Abs.	Description
1	⊕	640.0	0.8710	
2	⊕	420.0	0.1324	
3	⊕	304.0	0.1653	
4	⊕	233.5	1.0050	

[Instrument Properties]

Instrument Type: UV-1900 Series
Measuring Mode: Absorbance
Slit Width: 1.0 nm
Light Source Change Wavelength: 340.8 nm
S/R Exchange: Normal

[Attachment Properties]

Attachment: None

[Operation]

Threshold: 0.0010000
Points: 4
InterPolate: Disabled
Average: Disabled

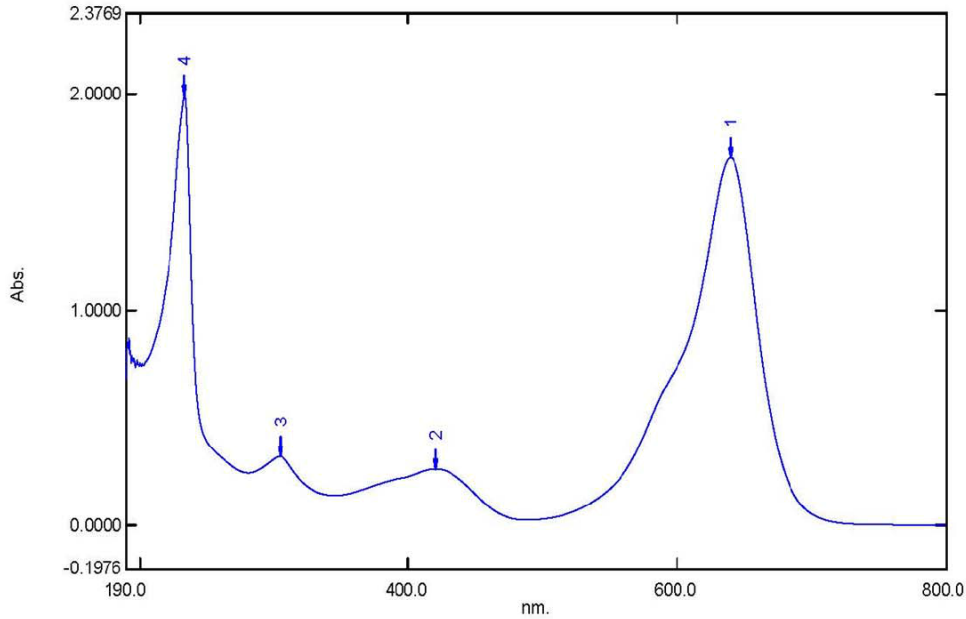
[Sample Preparation Properties]

Weight: 0.1
Volume: 100
Dilution: 10 ppm
Path Length:
Additional Information:

Spectrum Peak Pick Report

04-04-2019 03:24:31 PM

Data Set: GREEN V B-2018-192 20PPM - RawData



[Measurement Properties]

Wavelength Range (nm.): 190.0 to 800.0
Scan Speed: Fast
Sampling Interval: 0.5
Auto Sampling Interval: Enabled
Scan Mode: Single

No.	P/V	Wavelength	Abs.	Description
1	●	640.0	1.7064	
2	●	420.5	0.2618	
3	●	304.0	0.3209	
4	●	233.5	1.9940	

[Instrument Properties]

Instrument Type: UV-1900 Series
Measuring Mode: Absorbance
Slit Width: 1.0 nm
Light Source Change Wavelength: 340.8 nm
S/R Exchange: Normal

[Attachment Properties]

Attachment: None

[Operation]

Threshold: 0.0010000
Points: 4
InterPolate: Disabled
Average: Disabled

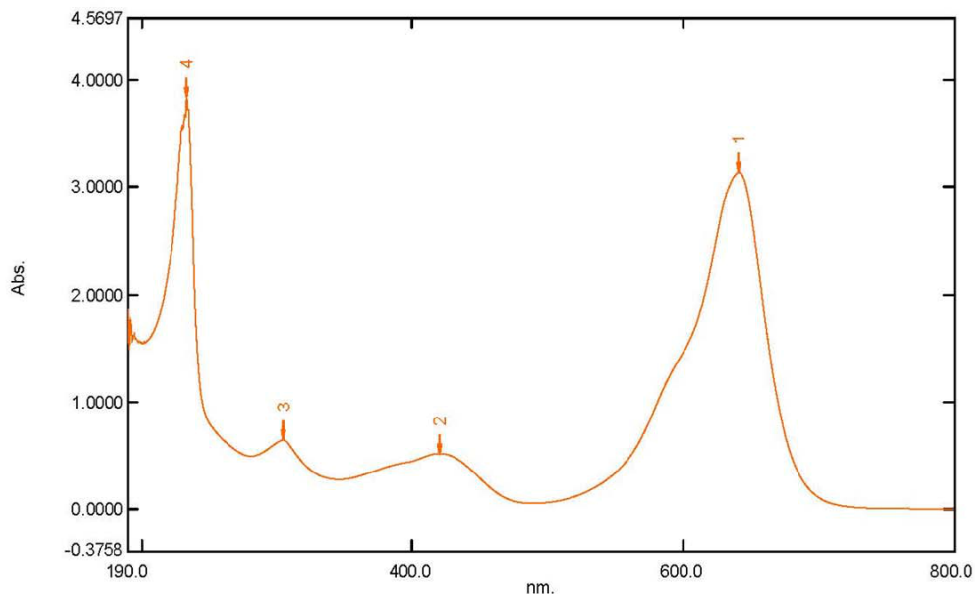
[Sample Preparation Properties]

Weight: 0.1
Volume: 100
Dilution: 20 ppm
Path Length:
Additional Information:

Spectrum Peak Pick Report

04-04-2019 03:31:54 PM

Data Set: GREEN V B-2018-192 40PPM - RawData



[Measurement Properties]

Wavelength Range (nm.): 190.0 to 800.0
Scan Speed: Fast
Sampling Interval: 0.5
Auto Sampling Interval: Enabled
Scan Mode: Single

No.	P/V	Wavelength	Abs.	Description
1	Ⓢ	641.5	3.1350	
2	Ⓢ	420.5	0.5205	
3	Ⓢ	304.5	0.6458	
4	Ⓢ	233.0	3.8343	

[Instrument Properties]

Instrument Type: UV-1900 Series
Measuring Mode: Absorbance
Slit Width: 1.0 nm
Light Source Change Wavelength: 340.8 nm
S/R Exchange: Normal

[Attachment Properties]

Attachment: None

[Operation]

Threshold: 0.0010000
Points: 4
InterPolate: Disabled
Average: Disabled

[Sample Preparation Properties]

Weight: 0.1
Volume: 100
Dilution: 40 ppm
Path Length:
Additional Information: