

BROWN SDL

TOP DYEING - 2%



SPLIT - 3%



PENETRATION



60° Solubility	Penetration	Light	F A S T N E S S					
			PERSPIRATION			WASHING		
			CS	SC	SW	CS	SC	SW
40	4	6	3-4	2	2	4-5	3	4-5

SCALE - 1 TO 5

CS - COTTON + SILK

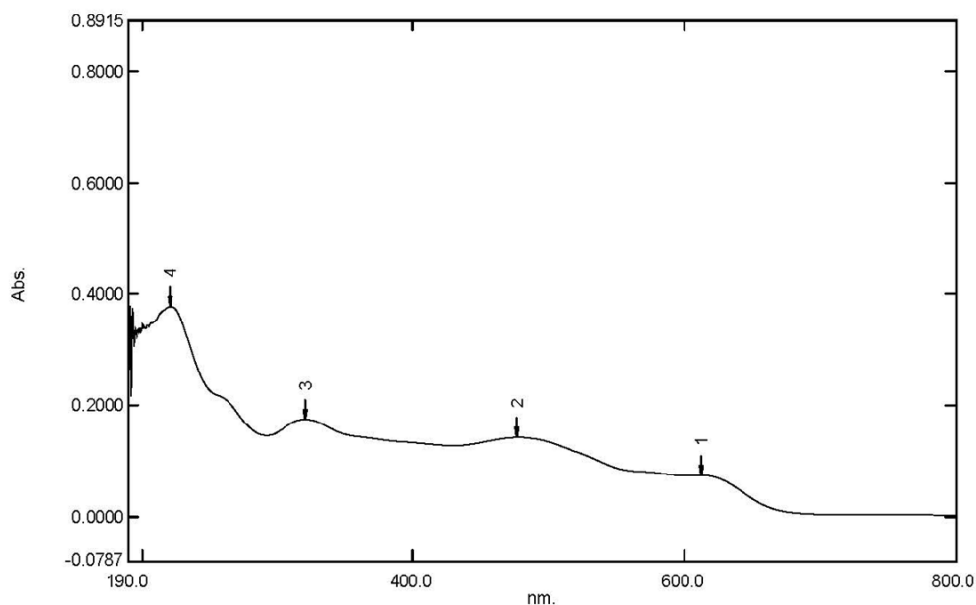
SC - SPUN DIACETATE

SW - SPUN WOOL

Spectrum Peak Pick Report

27-03-2019 11:55:26 AM

Data Set: BROWN SDL B-2018-128 10PPM - RawData



[Measurement Properties]
Wavelength Range (nm.): 190.0 to 800.0
Scan Speed: Fast
Sampling Interval: 0.5
Auto Sampling Interval: Enabled
Scan Mode: Single

No.	P/V	Wavelength	Abs.	Description
1	●	612.5	0.0733	
2	●	477.0	0.1416	
3	●	320.5	0.1741	
4	●	220.5	0.3770	

[Instrument Properties]
Instrument Type: UV-1900 Series
Measuring Mode: Absorbance
Slit Width: 1.0 nm
Light Source Change Wavelength: 340.8 nm
S/R Exchange: Normal

[Attachment Properties]
Attachment: None

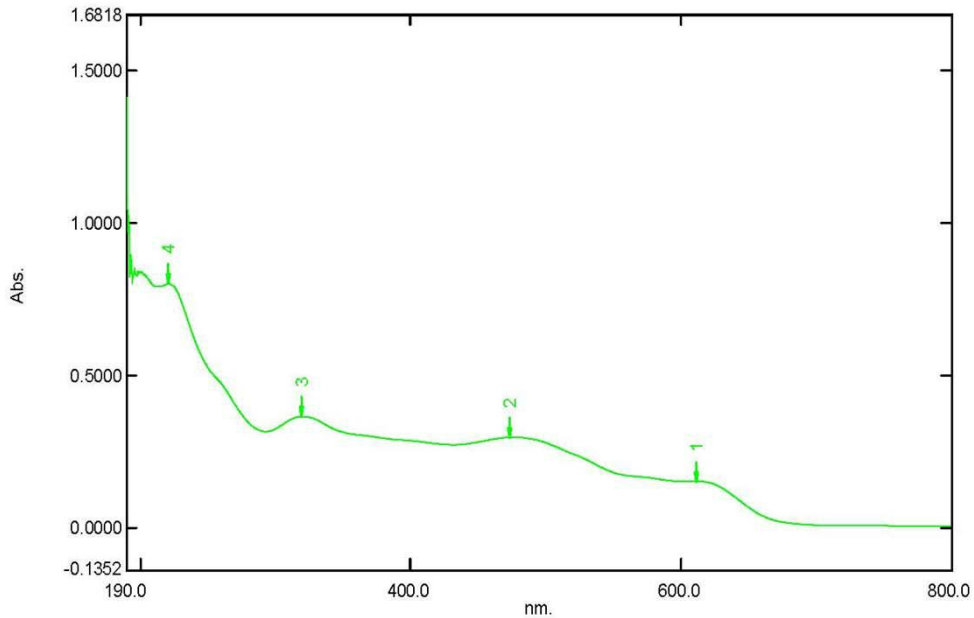
[Operation]
Threshold: 0.0010000
Points: 4
InterPolate: Disabled
Average: Disabled

[Sample Preparation Properties]
Weight: 0.1
Volume: 100
Dilution: 10 ppm
Path Length:
Additional Information:

Spectrum Peak Pick Report

27-03-2019 12:02:37 PM

Data Set: BROWN SDL B-2018-128 20PPM - RawData



[Measurement Properties]

Wavelength Range (nm.): 190.0 to 800.0
Scan Speed: Fast
Sampling Interval: 0.5
Auto Sampling Interval: Enabled
Scan Mode: Single

No.	P/V	Wavelength	Abs.	Description
1	●	611.5	0.1519	
2	●	474.0	0.2964	
3	●	319.5	0.3645	
4	●	220.5	0.7990	

[Instrument Properties]

Instrument Type: UV-1900 Series
Measuring Mode: Absorbance
Slit Width: 1.0 nm
Light Source Change Wavelength: 340.8 nm
S/R Exchange: Normal

[Attachment Properties]

Attachment: None

[Operation]

Threshold: 0.0010000
Points: 4
InterPolate: Disabled
Average: Disabled

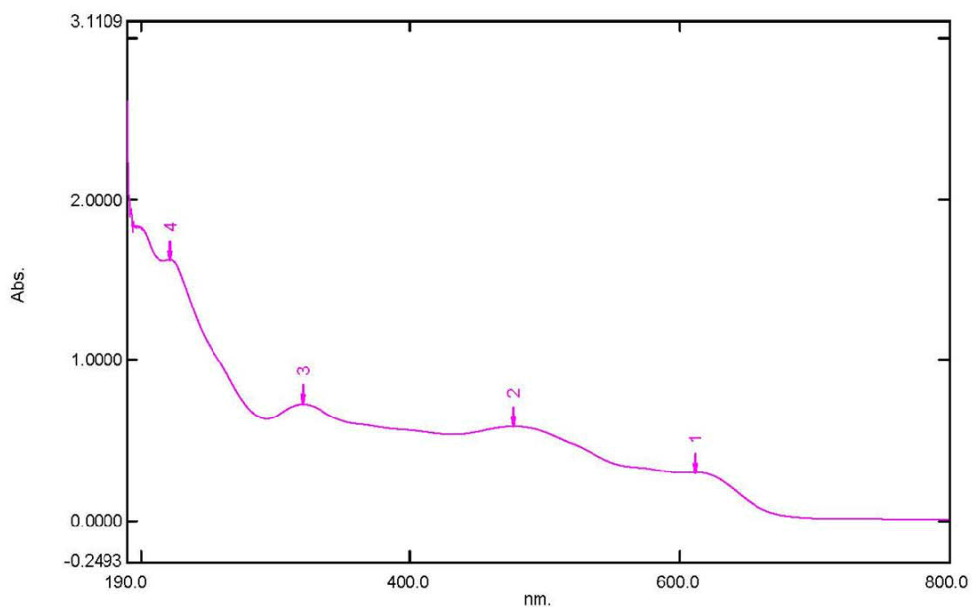
[Sample Preparation Properties]

Weight: 0.1
Volume: 100
Dilution: 20 ppm
Path Length:
Additional Information:

Spectrum Peak Pick Report

27-03-2019 12:05:49 PM

Data Set: BROWN SDL B-2018-128 40PPM - RawData



[Measurement Properties]
Wavelength Range (nm.): 190.0 to 800.0
Scan Speed: Fast
Sampling Interval: 0.5
Auto Sampling Interval: Enabled
Scan Mode: Single

No.	P/V	Wavelength	Abs.	Description
1	⊕	612.0	0.3012	
2	⊕	476.5	0.5866	
3	⊕	320.5	0.7256	
4	⊕	222.0	1.6238	

[Instrument Properties]
Instrument Type: UV-1900 Series
Measuring Mode: Absorbance
Slit Width: 1.0 nm
Light Source Change Wavelength: 340.8 nm
S/R Exchange: Normal

[Attachment Properties]
Attachment: None

[Operation]
Threshold: 0.0010000
Points: 4
InterPolate: Disabled
Average: Disabled

[Sample Preparation Properties]
Weight: 0.1
Volume: 100
Dilution: 40 ppm
Path Length:
Additional Information: