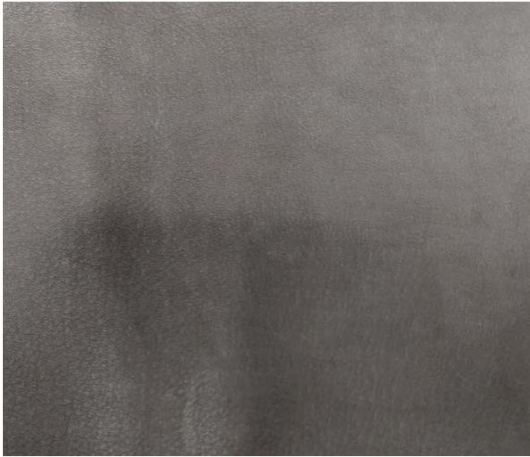




BROWN S-R

TOP DYEING - 2%



SPLIT - 3%



PENETRATION



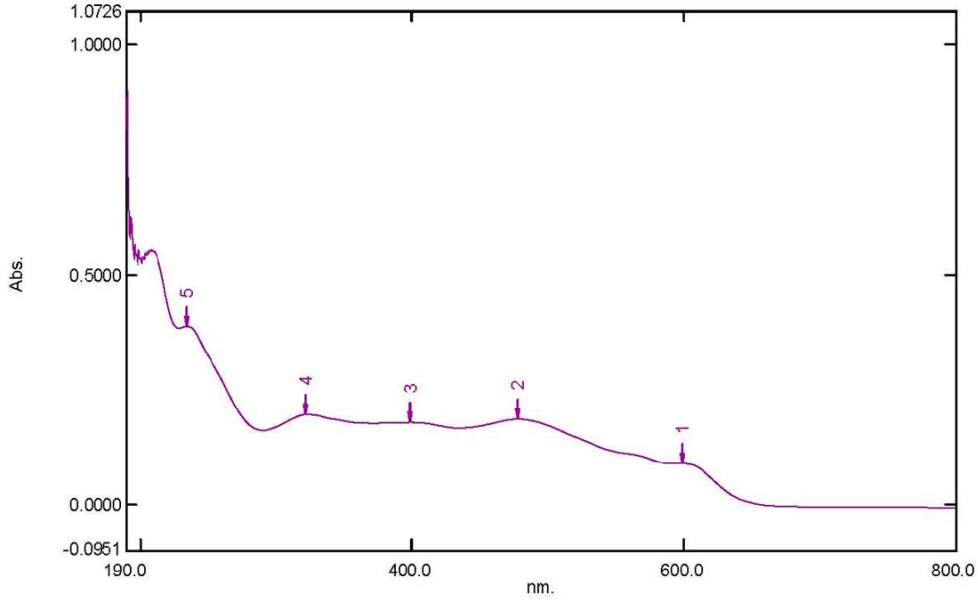
60° Solubility	Penetration	Light	F A S T N E S S					
			PERSPIRATION			WASHING		
			CS	SC	SW	CS	SC	SW
50	4	4	3-4	2	3	2	3	4

SCALE - 1 TO 5
 CS - COTTON + SILK
 SC - SPUN DIACETATE
 SW - SPUN WOOL

Spectrum Peak Pick Report

12-03-2019 02:42:59 PM

Data Set: BROWN 5R B-2018-124 10PPM - RawData



[Measurement Properties]
 Wavelength Range (nm.): 190.0 to 800.0
 Scan Speed: Fast
 Sampling Interval: 0.5
 Auto Sampling Interval: Enabled
 Scan Mode: Single

No.	P/V	Wavelength	Abs.	Description
1	⊕	599.5	0.0907	
2	⊕	478.0	0.1868	
3	⊕	399.0	0.1796	
4	⊕	321.5	0.1969	
5	⊕	234.0	0.3884	

[Instrument Properties]
 Instrument Type: UV-1900 Series
 Measuring Mode: Absorbance
 Slit Width: 1.0 nm
 Light Source Change Wavelength: 340.8 nm
 S/R Exchange: Normal

[Attachment Properties]
 Attachment: None

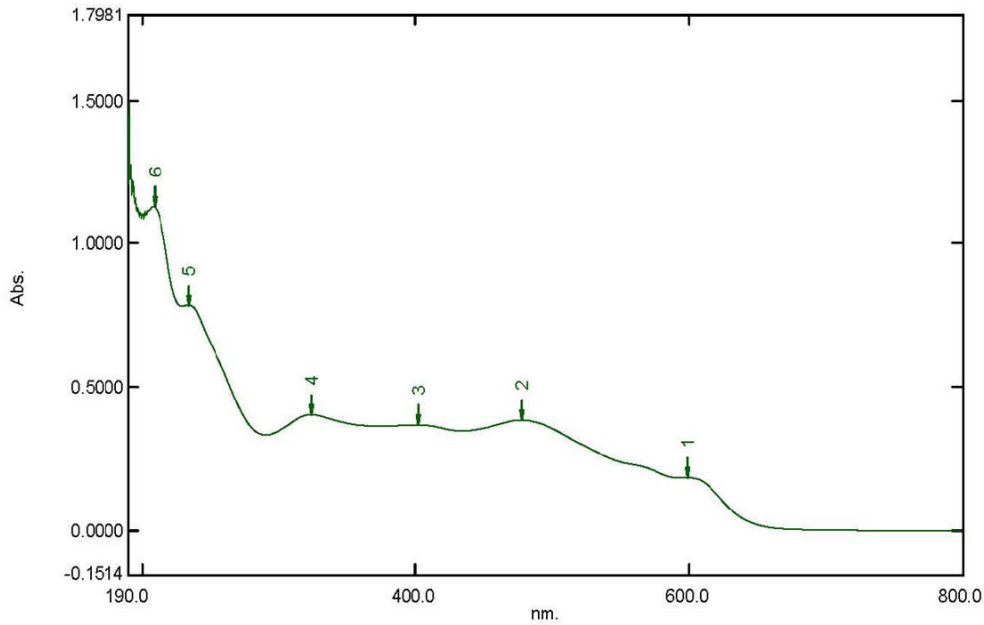
[Operation]
 Threshold: 0.0010000
 Points: 4
 InterPolate: Disabled
 Average: Disabled

[Sample Preparation Properties]
 Weight: 0.1
 Volume: 100
 Dilution: 10 ppm
 Path Length:
 Additional Information:

Spectrum Peak Pick Report

12-03-2019 02:41:51 PM

Data Set: BROWN 5R B-2018-124 20PPM - RawData



[Measurement Properties]
 Wavelength Range (nm.): 190.0 to 800.0
 Scan Speed: Fast
 Sampling Interval: 0.5
 Auto Sampling Interval: Enabled
 Scan Mode: Single

[Instrument Properties]
 Instrument Type: UV-1900 Series
 Measuring Mode: Absorbance
 Slit Width: 1.0 nm
 Light Source Change Wavelength: 340.8 nm
 S/R Exchange: Normal

[Attachment Properties]
 Attachment: None

[Operation]
 Threshold: 0.0010000
 Points: 4
 InterPolate: Disabled
 Average: Disabled

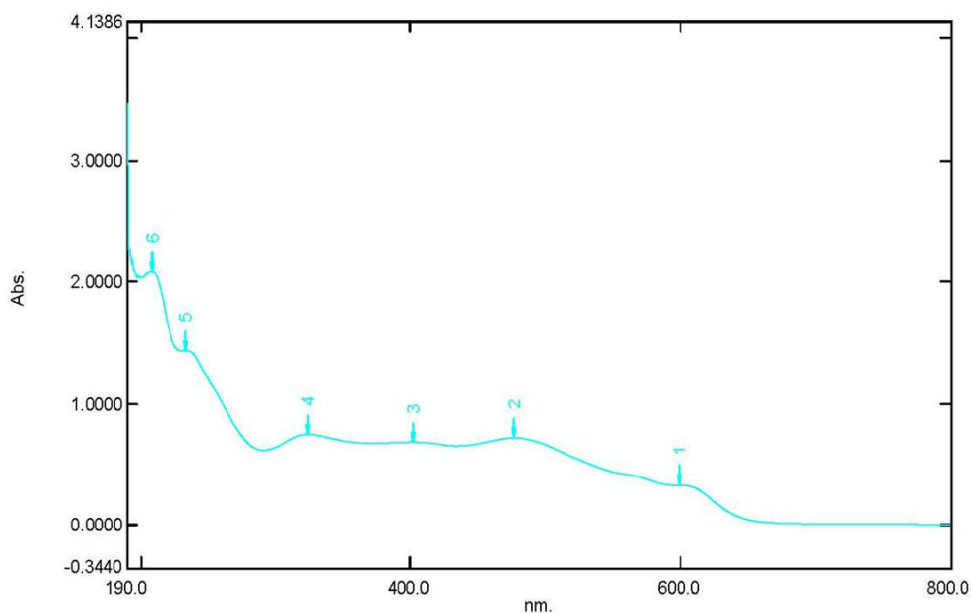
[Sample Preparation Properties]
 Weight: 0.1
 Volume: 100
 Dilution: 20 ppm
 Path Length:
 Additional Information:

No.	P/V	Wavelength	Abs.	Description
1	🟢	599.5	0.1837	
2	🟢	478.0	0.3846	
3	🟢	401.5	0.3680	
4	🟢	323.5	0.4034	
5	🟢	234.0	0.7851	
6	🟢	209.0	1.1291	

Spectrum Peak Pick Report

12-03-2019 02:40:01 PM

Data Set: BROWN 5R B-2018-124 40PPM - RawData



[Measurement Properties]
Wavelength Range (nm.): 190.0 to 800.0
Scan Speed: Fast
Sampling Interval: 0.5
Auto Sampling Interval: Enabled
Scan Mode: Single

[Instrument Properties]
Instrument Type: UV-1900 Series
Measuring Mode: Absorbance
Slit Width: 1.0 nm
Light Source Change Wavelength: 340.8 nm
S/R Exchange: Normal

[Attachment Properties]
Attachment: None

[Operation]
Threshold: 0.0010000
Points: 4
InterPolate: Disabled
Average: Disabled

[Sample Preparation Properties]
Weight: 0.1
Volume: 100
Dilution: 40 ppm
Path Length:
Additional Information:

No.	P/V	Wavelength	Abs.	Description
1	🟢	599.5	0.3273	
2	🟢	477.0	0.7142	
3	🟢	402.5	0.6793	
4	🟢	323.5	0.7430	
5	🟢	233.5	1.4364	
6	🟢	208.0	2.0888	