

BROWN NR

TOP DYEING - 2%



SPLIT - 3%



PENETRATION



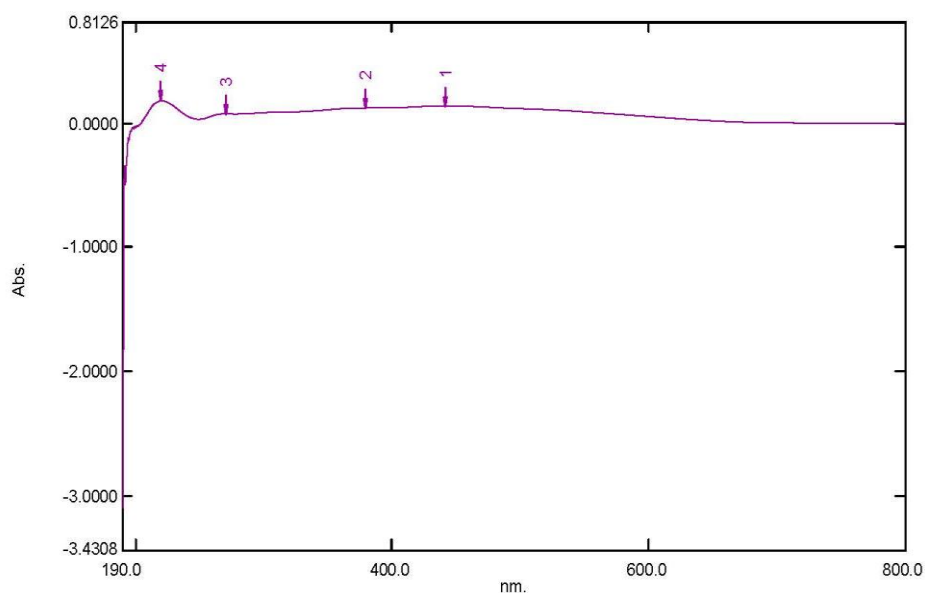
60° Solubility	Penetration	Light	F A S T N E S S					
			PERSPIRATION			WASHING		
			CS	SC	SW	CS	SC	SW
50	3	4	3-4	2	2	3	3	2-3

SCALE - 1 TO 5
 CS - COTTON + SILK
 SC - SPUN DIACETATE
 SW - SPUN WOOL

Spectrum Peak Pick Report

01-04-2019 03:03:09 PM

Data Set: BROWN NR B-2018-176 10PPM - RawData



[Measurement Properties]

Wavelength Range (nm.): 190.0 to 800.0
Scan Speed: Fast
Sampling Interval: 0.5
Auto Sampling Interval: Enabled
Scan Mode: Single

No.	P/V	Wavelength	Abs.	Description
1	🟢	442.0	0.1395	
2	🟢	379.5	0.1236	
3	🟢	270.5	0.0757	
4	🟢	220.0	0.1816	

[Instrument Properties]

Instrument Type: UV-1900 Series
Measuring Mode: Absorbance
Slit Width: 1.0 nm
Light Source Change Wavelength: 340.8 nm
S/R Exchange: Normal

[Attachment Properties]

Attachment: None

[Operation]

Threshold: 0.0010000
Points: 4
InterPlate: Disabled
Average: Disabled

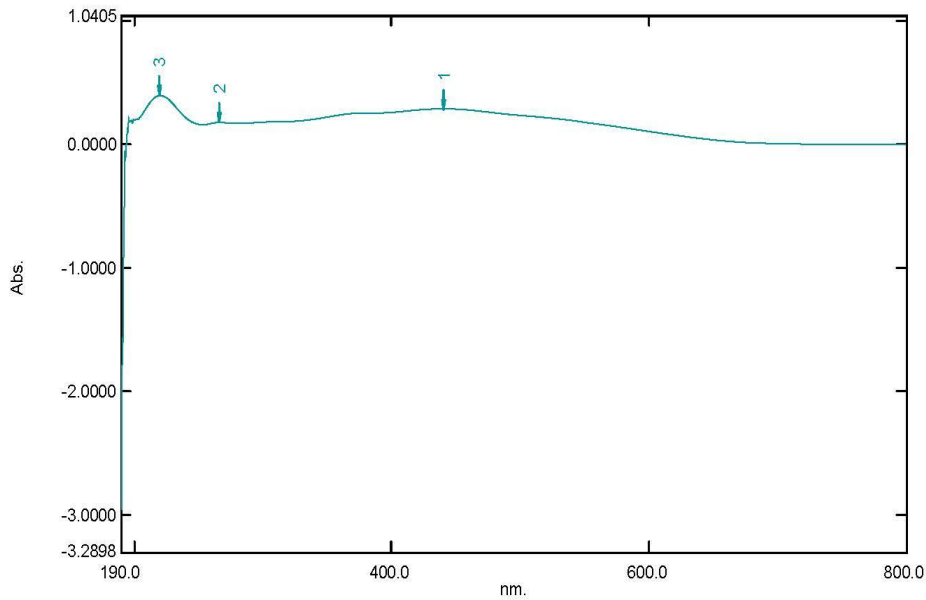
[Sample Preparation Properties]

Weight: 0.1
Volume: 100
Dilution: 10 ppm
Path Length:
Additional Information:

Spectrum Peak Pick Report

01-04-2019 03:10:27 PM

Data Set: BROWN NR B-2018-176 20PPM - RawData



[Measurement Properties]

Wavelength Range (nm.): 190.0 to 800.0
Scan Speed: Fast
Sampling Interval: 0.5
Auto Sampling Interval: Enabled
Scan Mode: Single

No.	P/V	Wavelength	Abs.	Description
1	①	440.5	0.2893	
2	②	266.0	0.1783	
3	③	219.5	0.3965	

[Instrument Properties]

Instrument Type: UV-1900 Series
Measuring Mode: Absorbance
Slit Width: 1.0 nm
Light Source Change Wavelength: 340.8 nm
S/R Exchange: Normal

[Attachment Properties]

Attachment: None

[Operation]

Threshold: 0.0010000
Points: 4
InterPolate: Disabled
Average: Disabled

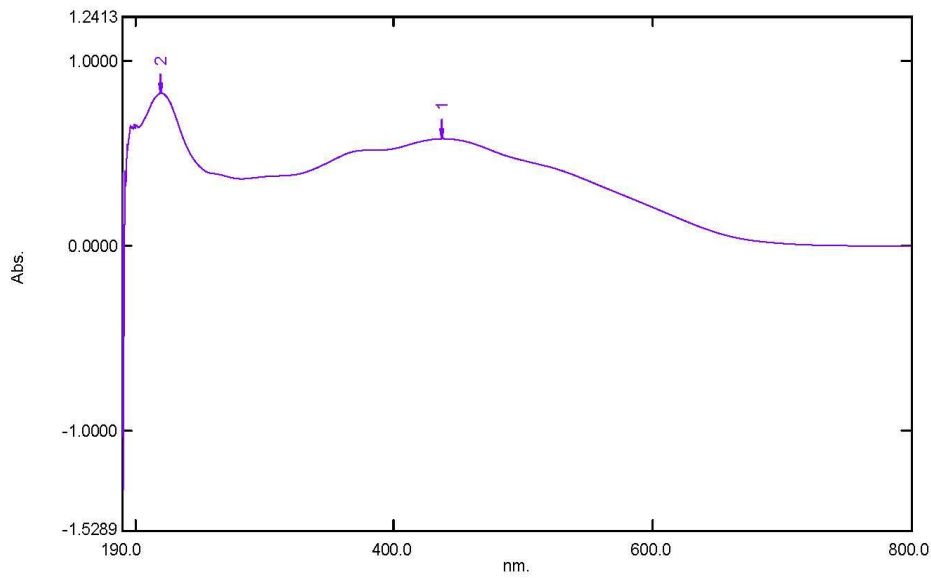
[Sample Preparation Properties]

Weight: 0.1
Volume: 100
Dilution: 20 ppm
Path Length:
Additional Information:

Spectrum Peak Pick Report

01-04-2019 03:12:42 PM

Data Set: BROWN NR B-2018-176 40PPM - RawData



[Measurement Properties]
Wavelength Range (nm.): 190.0 to 800.0
Scan Speed: Fast
Sampling Interval: 0.5
Auto Sampling Interval: Enabled
Scan Mode: Single

No.	P/V	Wavelength	Abs.	Description
1	●	437.5	0.5826	
2	●	219.5	0.8293	

[Instrument Properties]
Instrument Type: UV-1900 Series
Measuring Mode: Absorbance
Slit Width: 1.0 nm
Light Source Change Wavelength: 340.8 nm
S/R Exchange: Normal

[Attachment Properties]
Attachment: None

[Operation]
Threshold: 0.0010000
Points: 4
InterPolate: Disabled
Average: Disabled

[Sample Preparation Properties]
Weight: 0.1
Volume: 100
Dilution: 40 ppm
Path Length:
Additional Information: