

BROWN MFR

TOP DYEING - 2%



SPLIT - 3%



PENETRATION



60° Solubility	Penetration	Light	F A S T N E S S					
			PERSPIRATION			WASHING		
			CS	SC	SW	CS	SC	SW
70	4	5	3	2	2	5	3	3

SCALE - 1 TO 5

CS - COTTON + SILK

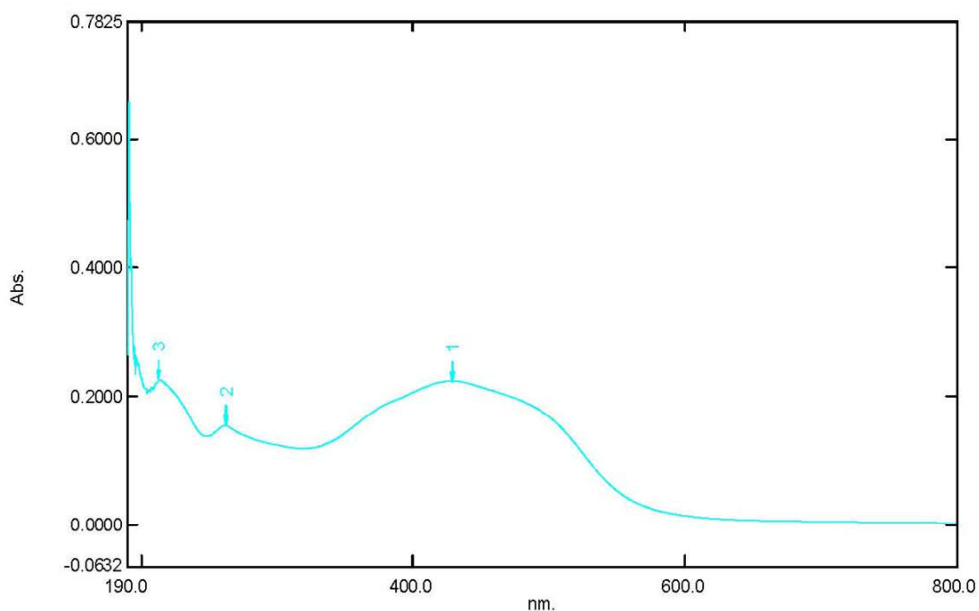
SC - SPUN DIACETATE

SW - SPUN WOOL

Spectrum Peak Pick Report

28-03-2019 12:54:00 PM

Data Set: BROWN MFR B-2018-168 10PPM - RawData



[Measurement Properties]
Wavelength Range (nm.): 190.0 to 800.0
Scan Speed: Fast
Sampling Interval: 0.5
Auto Sampling Interval: Enabled
Scan Mode: Single

No.	P/V	Wavelength	Abs.	Description
1	①	429.0	0.2233	
2	②	262.0	0.1536	
3	③	213.0	0.2250	

[Instrument Properties]
Instrument Type: UV-1900 Series
Measuring Mode: Absorbance
Slit Width: 1.0 nm
Light Source Change Wavelength: 340.8 nm
S/R Exchange: Normal

[Attachment Properties]
Attachment: None

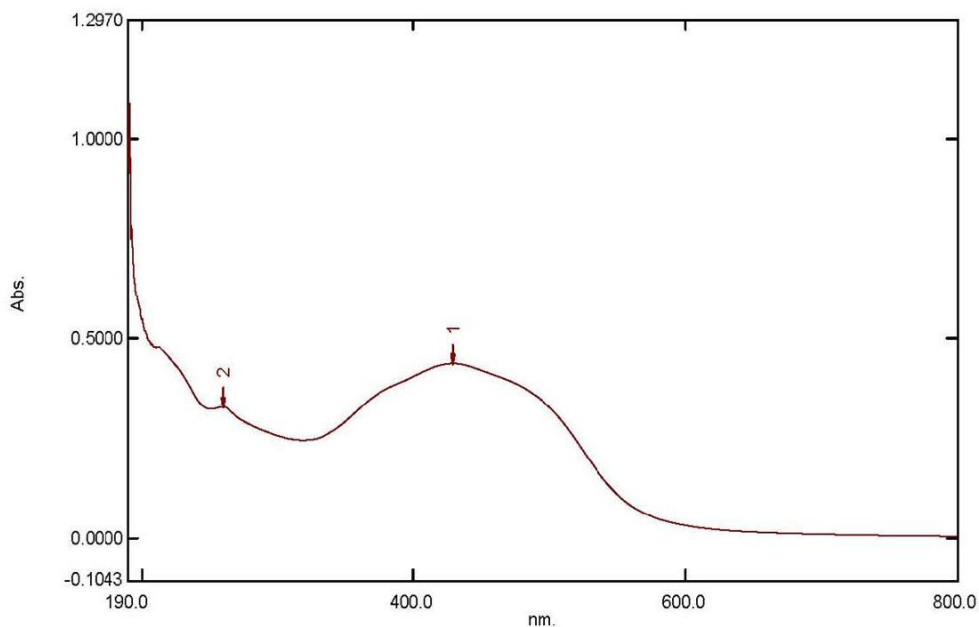
[Operation]
Threshold: 0.0010000
Points: 4
InterPolate: Disabled
Average: Disabled

[Sample Preparation Properties]
Weight: 0.1
Volume: 100
Dilution: 10 ppm
Path Length:
Additional Information:

Spectrum Peak Pick Report

28-03-2019 01:01:39 PM

Data Set: BROWN MFR B-2018-168 20PPM - RawData



[Measurement Properties]
Wavelength Range (nm.): 190.0 to 800.0
Scan Speed: Fast
Sampling Interval: 0.5
Auto Sampling Interval: Enabled
Scan Mode: Single

No.	P/V	Wavelength	Abs.	Description
1	●	429.0	0.4368	
2	●	260.0	0.3289	

[Instrument Properties]
Instrument Type: UV-1900 Series
Measuring Mode: Absorbance
Slit Width: 1.0 nm
Light Source Change Wavelength: 340.8 nm
S/R Exchange: Normal

[Attachment Properties]
Attachment: None

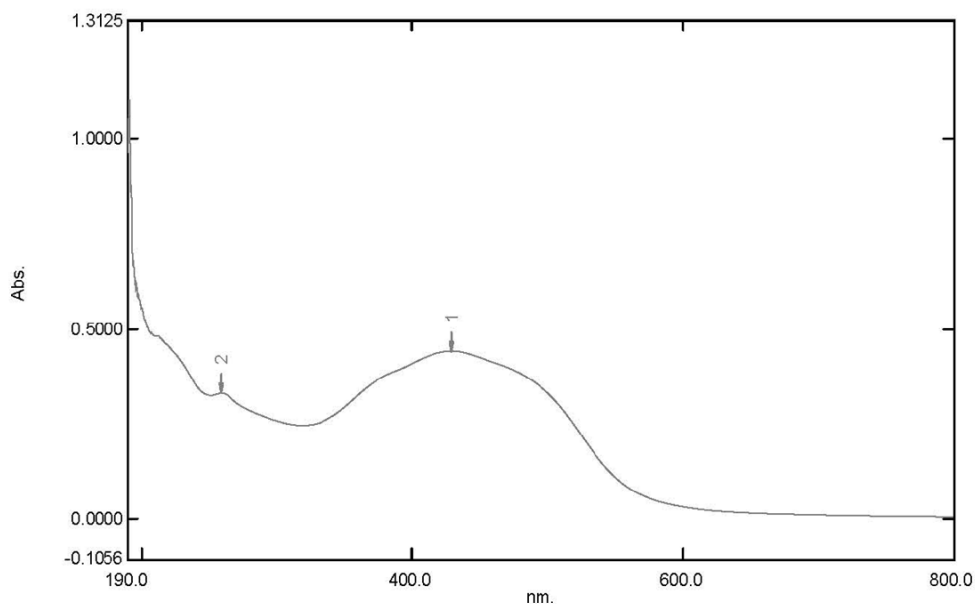
[Operation]
Threshold: 0.0010000
Points: 4
InterPolate: Disabled
Average: Disabled

[Sample Preparation Properties]
Weight: 0.1
Volume: 100
Dilution: 20 ppm
Path Length:
Additional Information:

Spectrum Peak Pick Report

28-03-2019 01:03:23 PM

Data Set: BROWN MFR B-2018-168 40PPM - RawData



[Measurement Properties]
Wavelength Range (nm.): 190.0 to 800.0
Scan Speed: Fast
Sampling Interval: 0.5
Auto Sampling Interval: Enabled
Scan Mode: Single

No.	P/V	Wavelength	Abs.	Description
1	●	429.0	0.4417	
2	●	259.5	0.3301	

[Instrument Properties]
Instrument Type: UV-1900 Series
Measuring Mode: Absorbance
Slit Width: 1.0 nm
Light Source Change Wavelength: 340.8 nm
S/R Exchange: Normal

[Attachment Properties]
Attachment: None

[Operation]
Threshold: 0.0010000
Points: 4
Interpolate: Disabled
Average: Disabled

[Sample Preparation Properties]
Weight: 0.1
Volume: 100
Dilution: 40 ppm
Path Length:
Additional Information: