

BROWN MBL

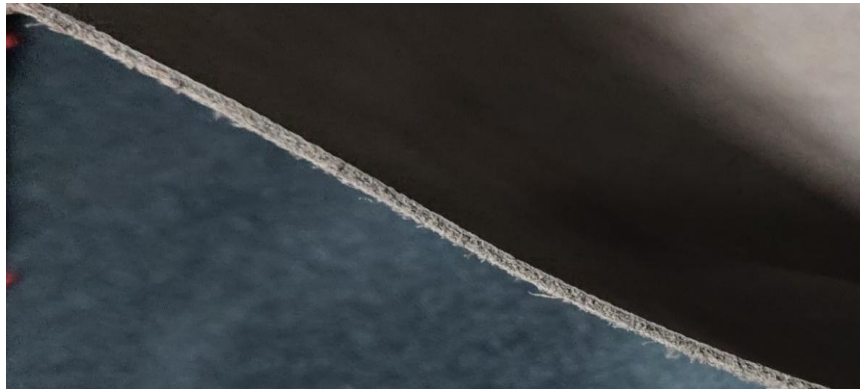
TOP DYEING - 2%



SPLIT - 3%



PENETRATION



| 60° Solubility | Penetration | Light | F A S T N E S S | | | | | |
|----------------|-------------|-------|-----------------|----|----|---------|----|----|
| | | | PERSPIRATION | | | WASHING | | |
| | | | CS | SC | SW | CS | SC | SW |
| 55 | 3 | 4-5 | 4 | 3 | 3 | 4 | 3 | 4 |

SCALE - 1 TO 5

CS - COTTON + SILK

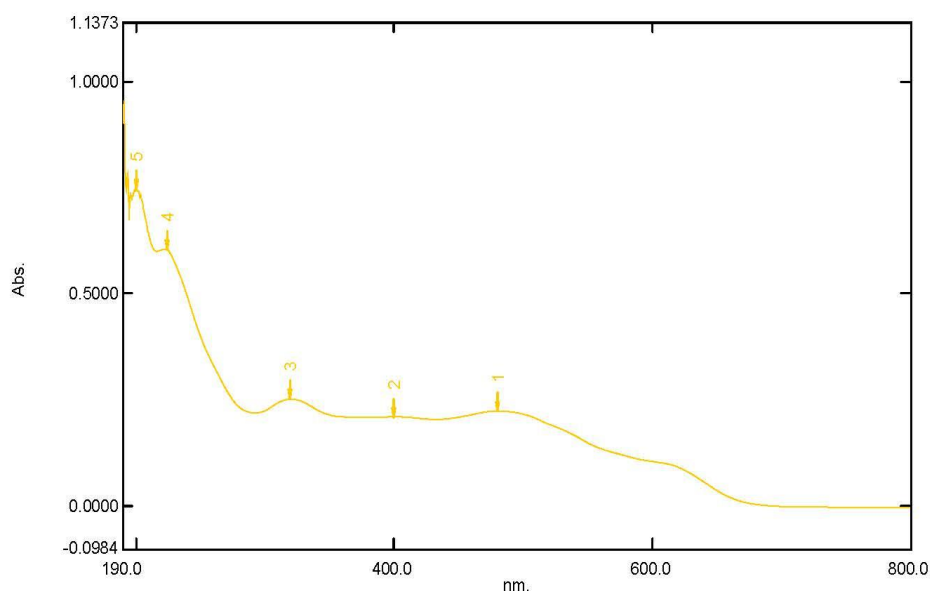
SC - SPUN DIACETATE

SW - SPUN WOOL

Spectrum Peak Pick Report

12-03-2019 03:15:04 PM

Data Set: BROWN MBL B-2018-127 10PPM - RawData



[Measurement Properties]
 Wavelength Range (nm.): 190.0 to 800.0
 Scan Speed: Fast
 Sampling Interval: 0.5
 Auto Sampling Interval: Enabled
 Scan Mode: Single

| No. | P/V | Wavelength | Abs. | Description |
|-----|-----|------------|--------|-------------|
| 1 | | 480.0 | 0.2238 | |
| 2 | | 400.0 | 0.2102 | |
| 3 | | 319.5 | 0.2518 | |
| 4 | | 223.5 | 0.6046 | |
| 5 | | 200.0 | 0.7463 | |

[Instrument Properties]
 Instrument Type: UV-1900 Series
 Measuring Mode: Absorbance
 Slit Width: 1.0 nm
 Light Source Change Wavelength: 340.8 nm
 S/R Exchange: Normal

[Attachment Properties]
 Attachment: None

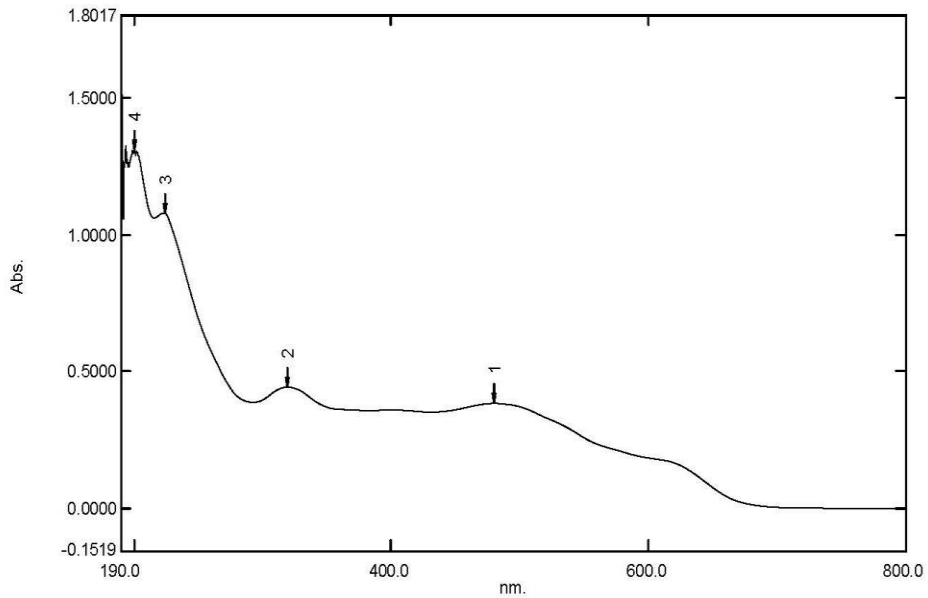
[Operation]
 Threshold: 0.0010000
 Points: 4
 InterPlate: Disabled
 Average: Disabled

[Sample Preparation Properties]
 Weight: 0.1
 Volume: 100
 Dilution: 10 ppm
 Path Length:
 Additional Information:

Spectrum Peak Pick Report

12-03-2019 03:19:23 PM

Data Set: BROWN MBL B-2018-127 20PPM - RawData



[Measurement Properties]
Wavelength Range (nm.): 190.0 to 800.0
Scan Speed: Fast
Sampling Interval: 0.5
Auto Sampling Interval: Enabled
Scan Mode: Single

| No. | P/V | Wavelength | Abs. | Description |
|-----|-----|------------|--------|-------------|
| 1 | ● | 480.0 | 0.3829 | |
| 2 | ● | 319.5 | 0.4425 | |
| 3 | ● | 223.5 | 1.0789 | |
| 4 | ● | 200.0 | 1.3109 | |

[Instrument Properties]
Instrument Type: UV-1900 Series
Measuring Mode: Absorbance
Slit Width: 1.0 nm
Light Source Change Wavelength: 340.8 nm
S/R Exchange: Normal

[Attachment Properties]
Attachment: None

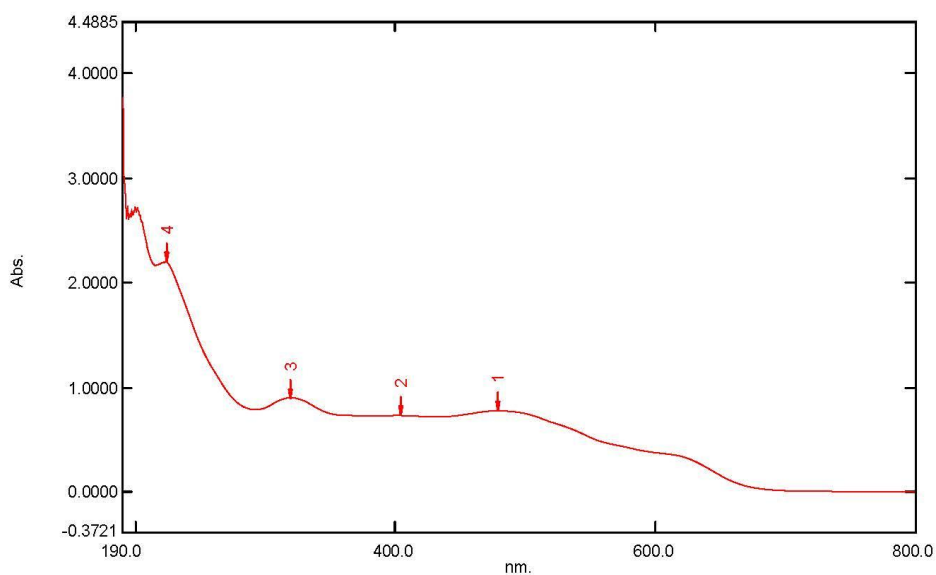
[Operation]
Threshold: 0.0010000
Points: 4
InterPolate: Disabled
Average: Disabled

[Sample Preparation Properties]
Weight: 0.1
Volume: 100
Dilution: 20 ppm
Path Length:
Additional Information:

Spectrum Peak Pick Report

12-03-2019 03:25:00 PM

Data Set: BROWN MBL B-2018-127 40PPM - RawData



[Measurement Properties]
Wavelength Range (nm.): 190.0 to 800.0
Scan Speed: Fast
Sampling Interval: 0.5
Auto Sampling Interval: Enabled
Scan Mode: Single

| No. | P/V | Wavelength | Abs. | Description |
|-----|-----|------------|--------|-------------|
| 1 | ● | 479.5 | 0.7758 | |
| 2 | ● | 404.0 | 0.7306 | |
| 3 | ● | 319.0 | 0.8993 | |
| 4 | ● | 223.5 | 2.1970 | |

[Instrument Properties]
Instrument Type: UV-1900 Series
Measuring Mode: Absorbance
Slit Width: 1.0 nm
Light Source Change Wavelength: 340.8 nm
S/R Exchange: Normal

[Attachment Properties]
Attachment: None

[Operation]
Threshold: 0.0010000
Points: 4
InterPolate: Disabled
Average: Disabled

[Sample Preparation Properties]
Weight: 0.1
Volume: 100
Dilution: 40 ppm
Path Length:
Additional Information: