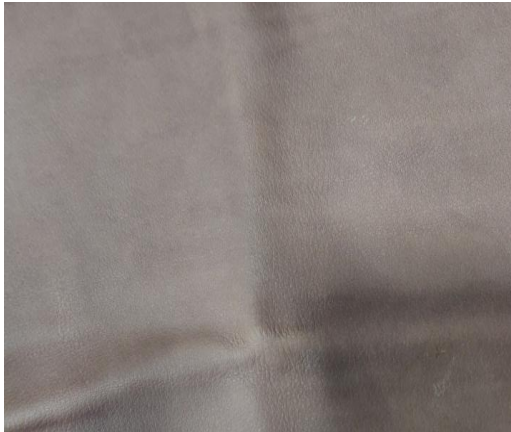


**BROWN DCD**

TOP DYEING - 2%



SPLIT - 3%



**PENETRATION**



60° Solubility	Penetration	Light	<b>F A S T N E S S</b>					
			PERSPIRATION			WASHING		
			CS	SC	SW	CS	SC	SW
50	6	5	3-4	5	5	4	3	4-5

SCALE - 1 TO 5

CS - COTTON + SILK

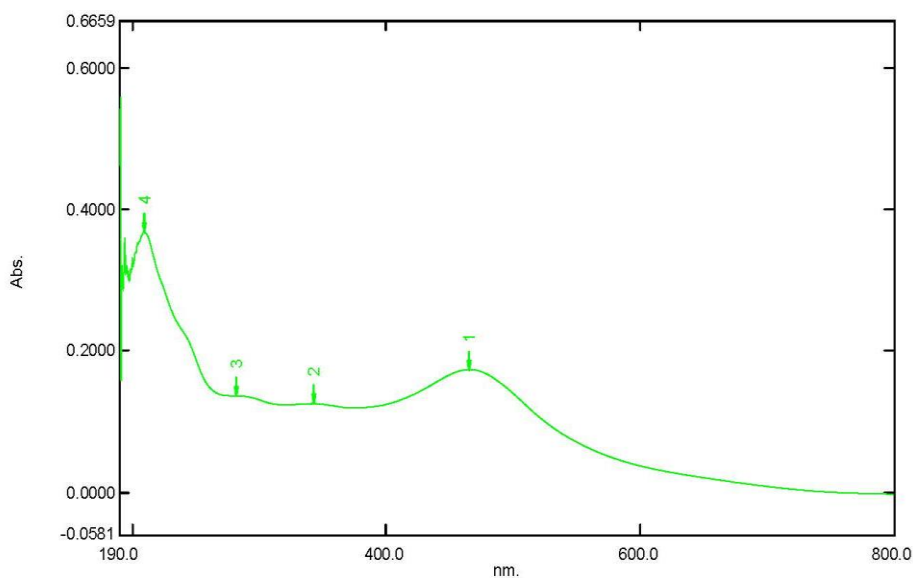
SC - SPUN DIACETATE

SW - SPUN WOOL

# Spectrum Peak Pick Report

12-03-2019 02:31:30 PM

Data Set: BROWN DCD B-2018-123 10PPM - RawData



[Measurement Properties]  
 Wavelength Range (nm.): 190.0 to 800.0  
 Scan Speed: Fast  
 Sampling Interval: 0.5  
 Auto Sampling Interval: Enabled  
 Scan Mode: Single

No.	P/V	Wavelength	Abs.	Description
1	Ⓢ	466.0	0.1741	
2	Ⓢ	343.5	0.1257	
3	Ⓢ	282.0	0.1369	
4	Ⓢ	209.0	0.3690	

[Instrument Properties]  
 Instrument Type: UV-1900 Series  
 Measuring Mode: Absorbance  
 Slit Width: 1.0 nm  
 Light Source Change Wavelength: 340.8 nm  
 S/R Exchange: Normal

[Attachment Properties]  
 Attachment: None

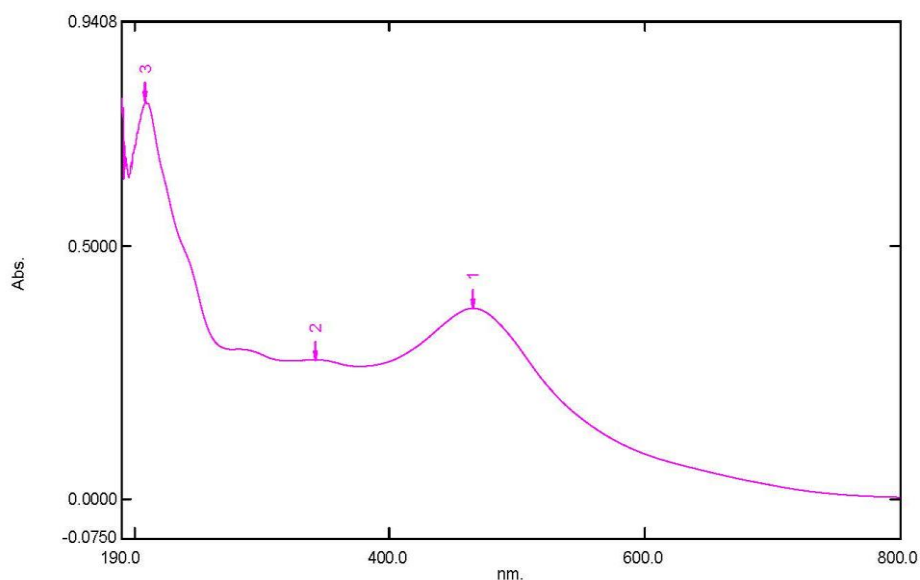
[Operation]  
 Threshold: 0.0010000  
 Points: 4  
 InterPolate: Disabled  
 Average: Disabled

[Sample Preparation Properties]  
 Weight: 0.1  
 Volume: 100  
 Dilution: 10 ppm  
 Path Length:  
 Additional Information:

# Spectrum Peak Pick Report

12-03-2019 02:33:24 PM

Data Set: BROWN DCD B-2018-123 20PPM - RawData



[Measurement Properties]

Wavelength Range (nm.): 190.0 to 800.0  
Scan Speed: Fast  
Sampling Interval: 0.5  
Auto Sampling Interval: Enabled  
Scan Mode: Single

No.	P/V	Wavelength	Abs.	Description
1	●	466.0	0.3760	
2	●	341.5	0.2749	
3	●	208.5	0.7834	

[Instrument Properties]

Instrument Type: UV-1900 Series  
Measuring Mode: Absorbance  
Slit Width: 1.0 nm  
Light Source Change Wavelength: 340.8 nm  
S/R Exchange: Normal

[Attachment Properties]

Attachment: None

[Operation]

Threshold: 0.0010000  
Points: 4  
InterPolate: Disabled  
Average: Disabled

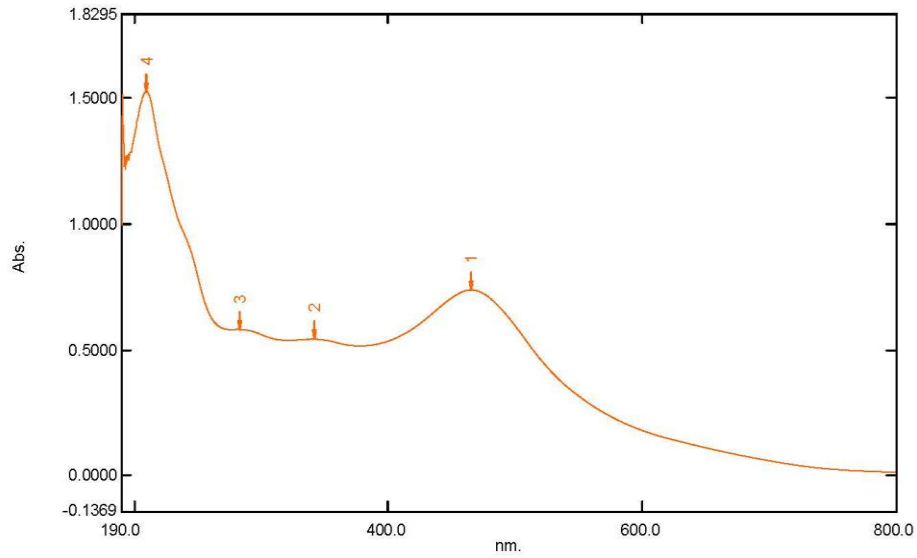
[Sample Preparation Properties]

Weight: 0.1  
Volume: 100  
Dilution: 20 ppm  
Path Length:  
Additional Information:

# Spectrum Peak Pick Report

12-03-2019 02:35:33 PM

Data Set: BROWN DCD B-2018-123 40PPM - RawData



[Measurement Properties]

Wavelength Range (nm.): 190.0 to 800.0  
Scan Speed: Fast  
Sampling Interval: 0.5  
Auto Sampling Interval: Enabled  
Scan Mode: Single

No.	P/V	Wavelength	Abs.	Description
1	●	465.5	0.7367	
2	●	342.0	0.5417	
3	●	282.5	0.5800	
4	●	209.0	1.5240	

[Instrument Properties]

Instrument Type: UV-1900 Series  
Measuring Mode: Absorbance  
Slit Width: 1.0 nm  
Light Source Change Wavelength: 340.8 nm  
S/R Exchange: Normal

[Attachment Properties]

Attachment: None

[Operation]

Threshold: 0.0010000  
Points: 4  
InterPolate: Disabled  
Average: Disabled

[Sample Preparation Properties]

Weight: 0.1  
Volume: 100  
Dilution: 40 ppm  
Path Length:  
Additional Information: