

**BROWN D2B**

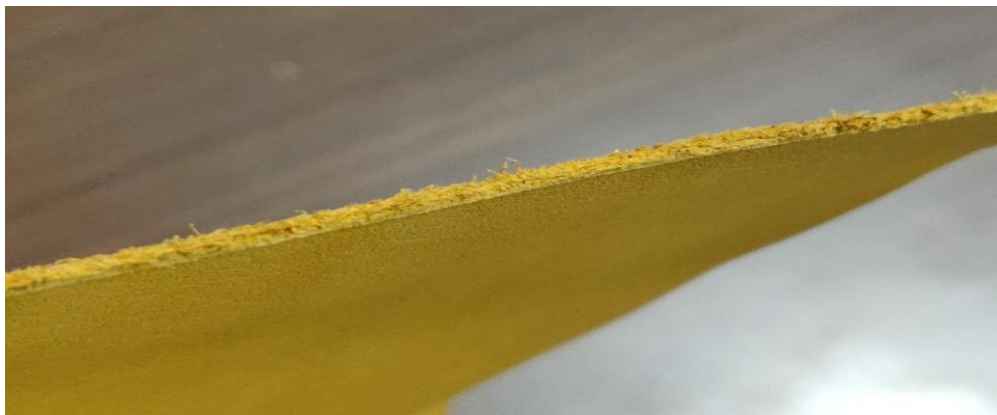
**TOP DYEING - 2%**



**SPLIT - 3%**



**PENETRATION**



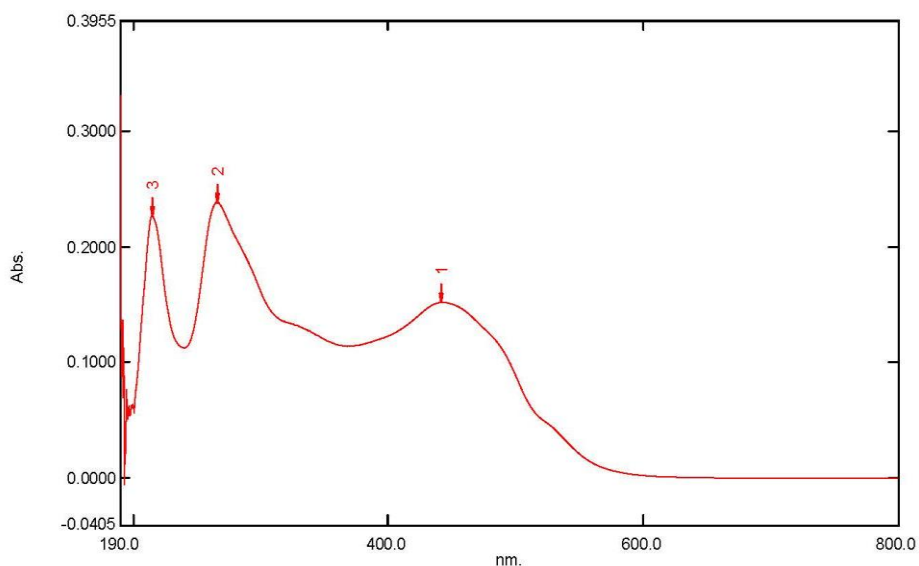
60° Solubility	Penetration	Light	<b>F A S T N E S S</b>					
			PERSPIRATION			WASHING		
			CS	SC	SW	CS	SC	SW
40	5	6	4-5	2	2	3-4	2-3	2-3

SCALE - 1 TO 5  
 CS - COTTON + SILK  
 SC - SPUN DIACETATE  
 SW - SPUN WOOL

# Spectrum Peak Pick Report

05-03-2019 03:41:45 PM

Data Set: BROWN D2B B-2018-100 10PPM - RawData



[Measurement Properties]  
Wavelength Range (nm.): 190.0 to 800.0  
Scan Speed: Fast  
Sampling Interval: 0.5  
Auto Sampling Interval: Enabled  
Scan Mode: Single

No.	P/V	Wavelength	Abs.	Description
1	●	442.0	0.1516	
2	●	265.5	0.2382	
3	●	214.5	0.2266	

[Instrument Properties]  
Instrument Type: UV-1900 Series  
Measuring Mode: Absorbance  
Slit Width: 1.0 nm  
Light Source Change Wavelength: 340.8 nm  
S/R Exchange: Normal

[Attachment Properties]  
Attachment: None

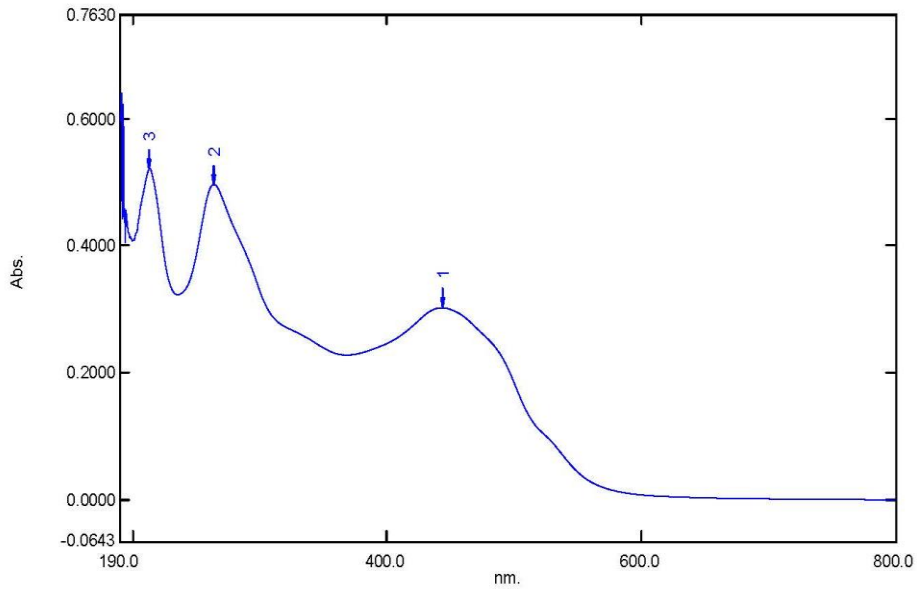
[Operation]  
Threshold: 0.0010000  
Points: 4  
InterPolate: Disabled  
Average: Disabled

[Sample Preparation Properties]  
Weight: 0.1  
Volume: 100  
Dilution: 10 ppm  
Path Length:  
Additional Information:

# Spectrum Peak Pick Report

05-03-2019 03:43:12 PM

Data Set: BROWN D2B B-2018-100 20PPM - RawData



[Measurement Properties]  
Wavelength Range (nm.): 190.0 to 800.0  
Scan Speed: Fast  
Sampling Interval: 0.5  
Auto Sampling Interval: Enabled  
Scan Mode: Single

No.	P/V	Wavelength	Abs.	Description
1	●	443.5	0.3018	
2	●	263.5	0.4963	
3	●	213.0	0.5212	

[Instrument Properties]  
Instrument Type: UV-1900 Series  
Measuring Mode: Absorbance  
Slit Width: 1.0 nm  
Light Source Change Wavelength: 340.8 nm  
S/R Exchange: Normal

[Attachment Properties]  
Attachment: None

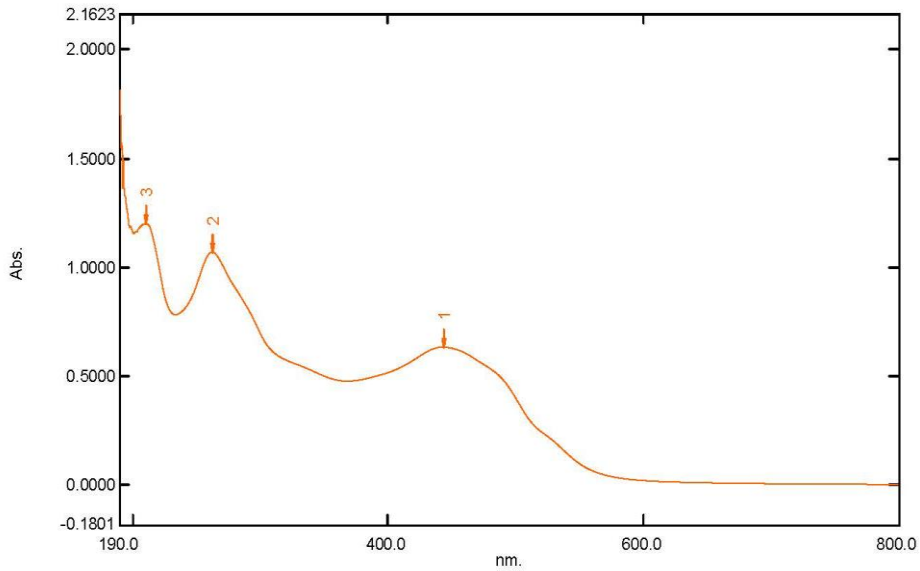
[Operation]  
Threshold: 0.0010000  
Points: 4  
InterPolate: Disabled  
Average: Disabled

[Sample Preparation Properties]  
Weight: 0.1  
Volume: 100  
Dilution: 20 ppm  
Path Length:  
Additional Information:

# Spectrum Peak Pick Report

05-03-2019 03:49:29 PM

Data Set: BROWN D2B B-2018-100 40PPM - RawData



[Measurement Properties]  
Wavelength Range (nm.): 190.0 to 800.0  
Scan Speed: Fast  
Sampling Interval: 0.5  
Auto Sampling Interval: Enabled  
Scan Mode: Single

No.	P/V	Wavelength	Abs.	Description
1	●	443.5	0.6324	
2	●	262.5	1.0700	
3	●	210.0	1.1998	

[Instrument Properties]  
Instrument Type: UV-1900 Series  
Measuring Mode: Absorbance  
Slit Width: 1.0 nm  
Light Source Change Wavelength: 340.8 nm  
S/R Exchange: Normal

[Attachment Properties]  
Attachment: None

[Operation]  
Threshold: 0.0010000  
Points: 4  
InterPolate: Disabled  
Average: Disabled

[Sample Preparation Properties]  
Weight: 0.1  
Volume: 100  
Dilution: 40 ppm  
Path Length:  
Additional Information: