

## BROWN CT

TOP DYEING - 2%



SPLIT - 3%



PENETRATION



60° Solubility	Penetration	Light	F A S T N E S S					
			PERSPIRATION			WASHING		
			CS	SC	SW	CS	SC	SW
50	3	2-3	3	2	2	5	3	3

SCALE - 1 TO 5

CS - COTTON + SILK

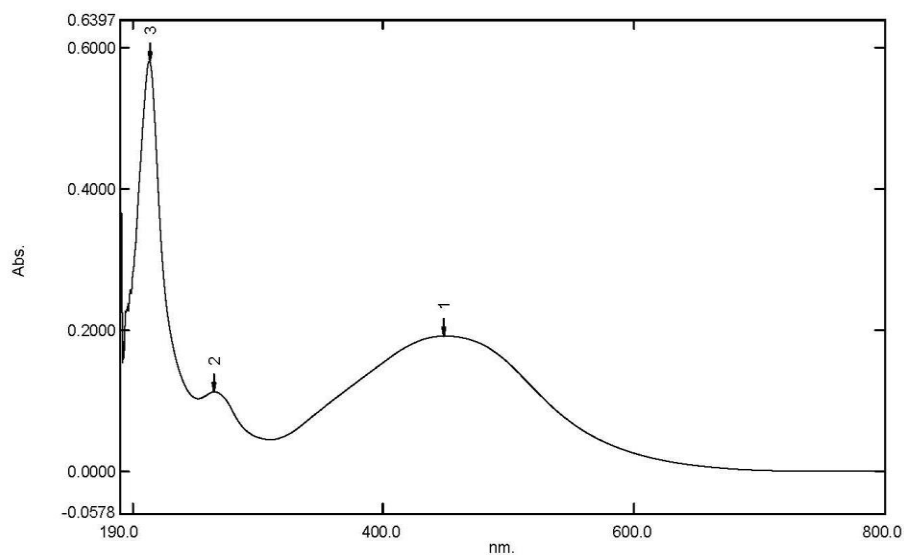
SC - SPUN DIACETATE

SW - SPUN WOOL

# Spectrum Peak Pick Report

29-03-2019 11:51:07 AM

Data Set: BROWN CT B-2018-171 10PPM - RawData



[Measurement Properties]  
 Wavelength Range (nm.): 190.0 to 800.0  
 Scan Speed: Fast  
 Sampling Interval: 0.5  
 Auto Sampling Interval: Enabled  
 Scan Mode: Single

No.	P/V	Wavelength	Abs.	Description
1	Ⓜ	448.5	0.1921	
2	Ⓜ	264.5	0.1130	
3	Ⓜ	213.5	0.5816	

[Instrument Properties]  
 Instrument Type: UV-1900 Series  
 Measuring Mode: Absorbance  
 Slit Width: 1.0 nm  
 Light Source Change Wavelength: 340.8 nm  
 S/R Exchange: Normal

[Attachment Properties]  
 Attachment: None

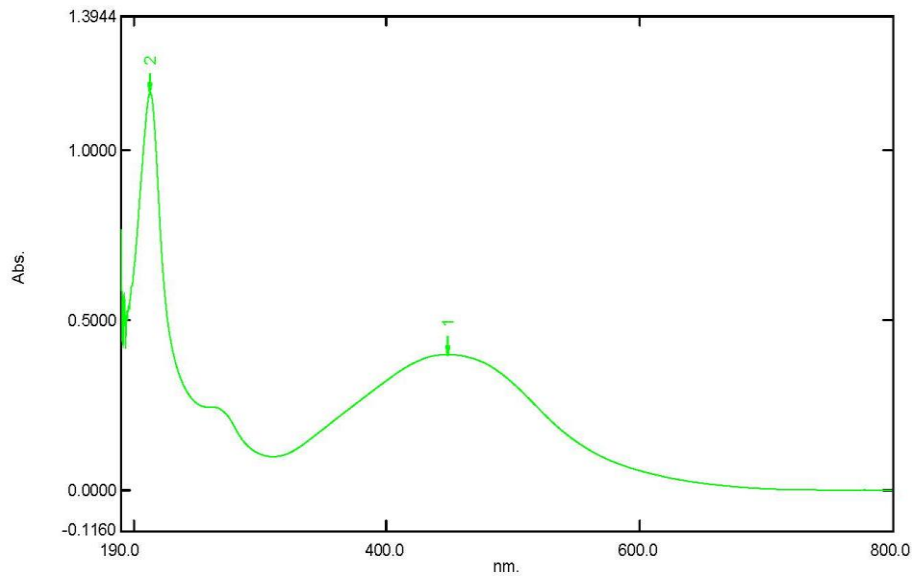
[Operation]  
 Threshold: 0.0010000  
 Points: 4  
 InterPolate: Disabled  
 Average: Disabled

[Sample Preparation Properties]  
 Weight: 0.1  
 Volume: 100  
 Dilution: 10 ppm  
 Path Length:  
 Additional Information:

# Spectrum Peak Pick Report

29-03-2019 12:00:38 PM

Data Set: BROWN CT B-2018-171 20PPM - RawData



[Measurement Properties]  
Wavelength Range (nm.): 190.0 to 800.0  
Scan Speed: Fast  
Sampling Interval: 0.5  
Auto Sampling Interval: Enabled  
Scan Mode: Single

No.	P/V	Wavelength	Abs.	Description
1	📍	448.0	0.3998	
2	📍	213.0	1.1698	

[Instrument Properties]  
Instrument Type: UV-1900 Series  
Measuring Mode: Absorbance  
Slit Width: 1.0 nm  
Light Source Change Wavelength: 340.8 nm  
S/R Exchange: Normal

[Attachment Properties]  
Attachment: None

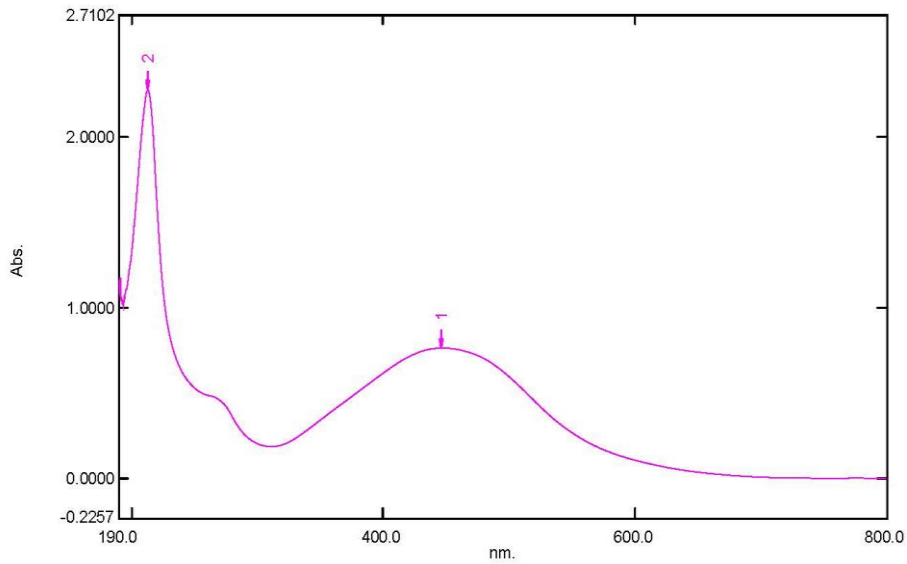
[Operation]  
Threshold: 0.0010000  
Points: 4  
InterPolate: Disabled  
Average: Disabled

[Sample Preparation Properties]  
Weight: 0.1  
Volume: 100  
Dilution: 20 ppm  
Path Length:  
Additional Information:

# Spectrum Peak Pick Report

29-03-2019 12:02:16 PM

Data Set: BROWN CT B-2018-171 40PPM - RawData



[Measurement Properties]  
Wavelength Range (nm.): 190.0 to 800.0  
Scan Speed: Fast  
Sampling Interval: 0.5  
Auto Sampling Interval: Enabled  
Scan Mode: Single

No.	P/V	Wavelength	Abs.	Description
1	🟢	446.0	0.7635	
2	🟢	212.5	2.2736	

[Instrument Properties]  
Instrument Type: UV-1900 Series  
Measuring Mode: Absorbance  
Slit Width: 1.0 nm  
Light Source Change Wavelength: 340.8 nm  
S/R Exchange: Normal

[Attachment Properties]  
Attachment: None

[Operation]  
Threshold: 0.0010000  
Points: 4  
InterPolate: Disabled  
Average: Disabled

[Sample Preparation Properties]  
Weight: 0.1  
Volume: 100  
Dilution: 40 ppm  
Path Length:  
Additional Information:







