

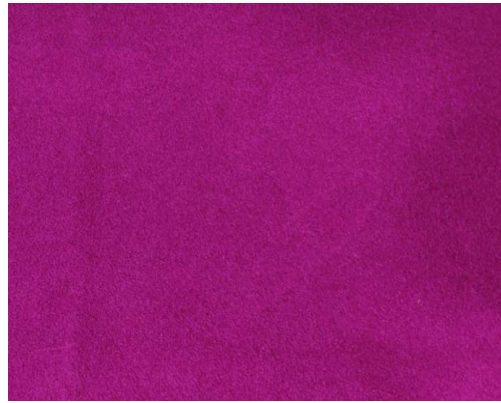


BRILLIANT RED 3B

TOP DYEING - 2%



SPLIT - 3%



PENETRATION



60° Solubility	Penetration	Light	F A S T N E S S					
			PERSPIRATION			WASHING		
			CS	SC	SW	CS	SC	SW
60	4	5	4-5	4-5	4-5	4	4	4-5

SCALE - 1 TO 5

CS - COTTON + SILK

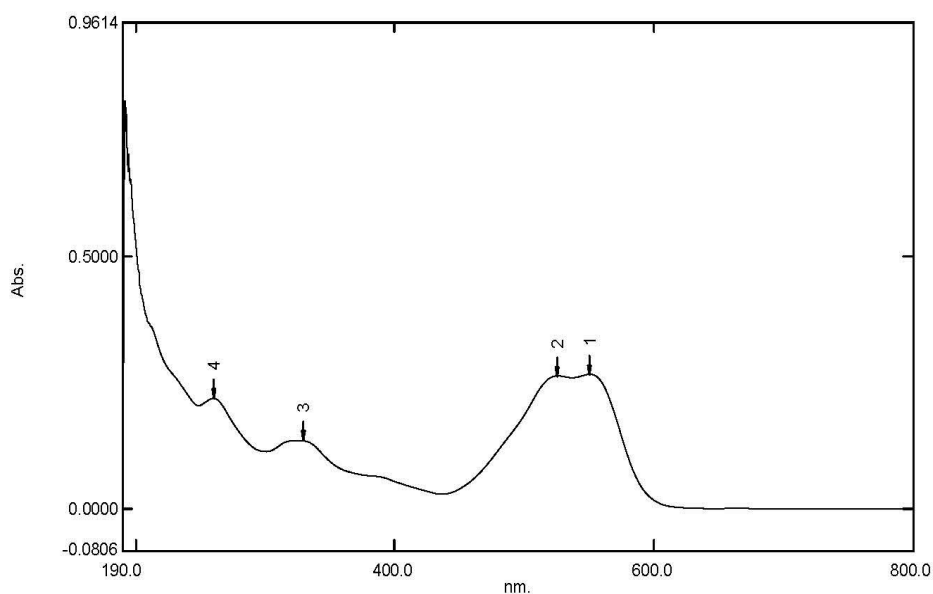
SC - SPUN DIACETATE

SW - SPUN WOOL

Spectrum Peak Pick Report

02-04-2019 03:30:35 PM

Data Set: BRILL RED 3B B-2018-181 10PPM - RawData



[Measurement Properties]

Wavelength Range (nm.): 190.0 to 800.0
 Scan Speed: Fast
 Sampling Interval: 0.5
 Auto Sampling Interval: Enabled
 Scan Mode: Single

No.	P/V	Wavelength	Abs.	Description
1	●	551.0	0.2659	
2	●	526.0	0.2626	
3	●	329.5	0.1345	
4	●	260.5	0.2181	

[Instrument Properties]

Instrument Type: UV-1900 Series
 Measuring Mode: Absorbance
 Slit Width: 1.0 nm
 Light Source Change Wavelength: 340.8 nm
 S/R Exchange: Normal

[Attachment Properties]

Attachment: None

[Operation]

Threshold: 0.0010000
 Points: 4
 InterPlate: Disabled
 Average: Disabled

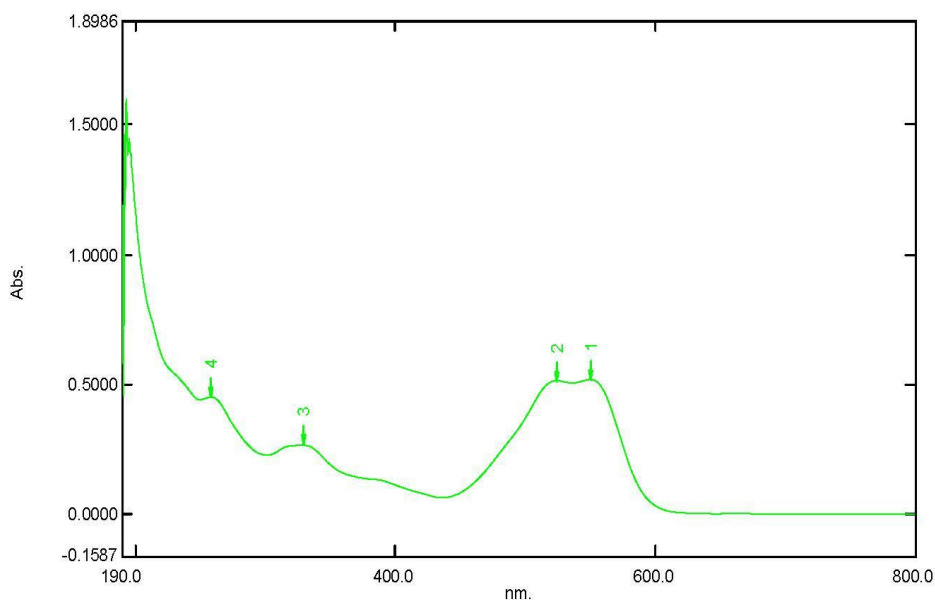
[Sample Preparation Properties]

Weight: 0.1
 Volume: 100
 Dilution: 10 ppm
 Path Length:
 Additional Information:

Spectrum Peak Pick Report

02-04-2019 03:36:13 PM

Data Set: BRILL RED 3B B-2018-181 20PPM - RawData



[Measurement Properties]
Wavelength Range (nm.): 190.0 to 800.0
Scan Speed: Fast
Sampling Interval: 0.5
Auto Sampling Interval: Enabled
Scan Mode: Single

No.	P/V	Wavelength	Abs.	Description
1	●	550.5	0.5186	
2	●	524.5	0.5136	
3	●	329.5	0.2655	
4	●	258.5	0.4499	

[Instrument Properties]
Instrument Type: UV-1900 Series
Measuring Mode: Absorbance
Slit Width: 1.0 nm
Light Source Change Wavelength: 340.8 nm
S/R Exchange: Normal

[Attachment Properties]
Attachment: None

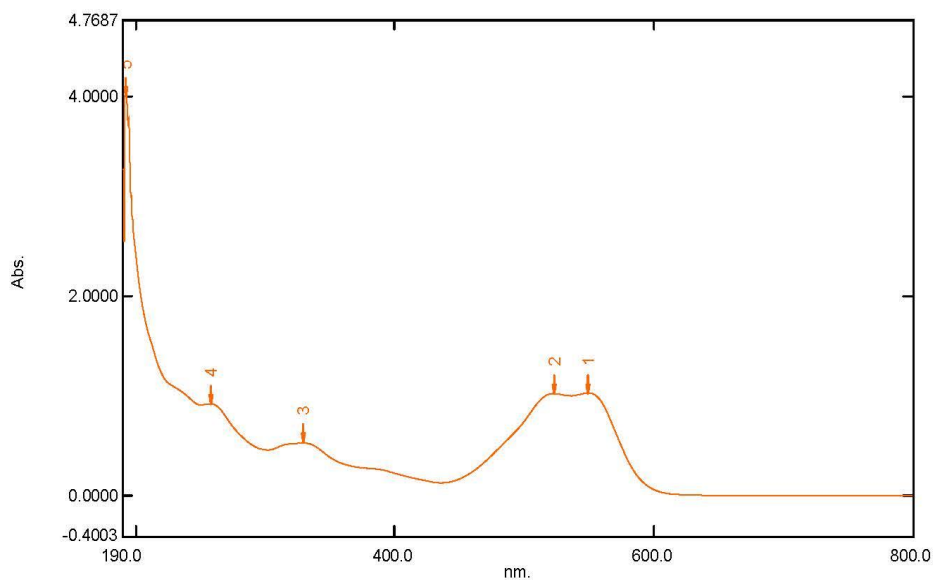
[Operation]
Threshold: 0.0010000
Points: 4
InterPolate: Disabled
Average: Disabled

[Sample Preparation Properties]
Weight: 0.1
Volume: 100
Dilution: 20 ppm
Path Length:
Additional Information:

Spectrum Peak Pick Report

02-04-2019 03:38:51 PM

Data Set: BRILL RED 3B B-2018-181 40PPM - RawData



[Measurement Properties]

Wavelength Range (nm.): 190.0 to 800.0
 Scan Speed: Fast
 Sampling Interval: 0.5
 Auto Sampling Interval: Enabled
 Scan Mode: Single

No.	P/V	Wavelength	Abs.	Description
1	●	549.5	1.0273	
2	●	523.0	1.0217	
3	●	330.0	0.5257	
4	●	257.5	0.9180	
5	●	192.5	4.0000	

[Instrument Properties]

Instrument Type: UV-1900 Series
 Measuring Mode: Absorbance
 Slit Width: 1.0 nm
 Light Source Change Wavelength: 340.8 nm
 S/R Exchange: Normal

[Attachment Properties]

Attachment: None

[Operation]

Threshold: 0.0010000
 Points: 4
 Interpolate: Disabled
 Average: Disabled

[Sample Preparation Properties]

Weight: 0.1
 Volume: 100
 Dilution: 40 ppm
 Path Length:
 Additional Information: