



**BORDEAUX MB**

**TOP DYEING - 2%**



**SPLIT - 3%**



**PENETRATION**



| 60° Solubility | Penetration | Light | <b>F A S T N E S S</b> |    |    |         |    |    |
|----------------|-------------|-------|------------------------|----|----|---------|----|----|
|                |             |       | PERSPIRATION           |    |    | WASHING |    |    |
|                |             |       | CS                     | SC | SW | CS      | SC | SW |
| 25             | 3           | 5-6   | 4                      | 2  | 2  | 2       | 2  | 4  |

SCALE - 1 TO 5

CS - COTTON + SILK

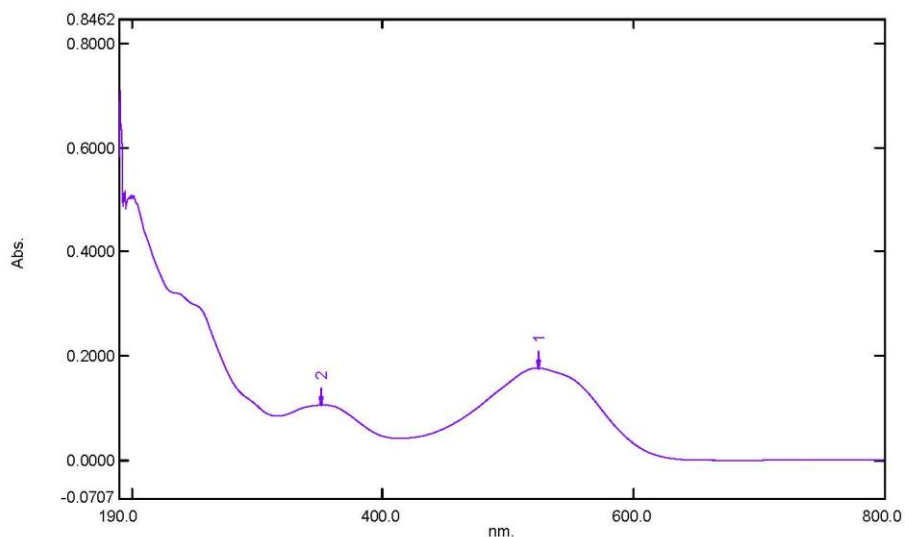
SC - SPUN DIACETATE

SW - SPUN WOOL

# Spectrum Peak Pick Report

08-03-2019 04:16:01 PM

Data Set: BORDEAUX MB B-2018-113 10PPM - RawData



[Measurement Properties]  
Wavelength Range (nm.): 190.0 to 800.0  
Scan Speed: Fast  
Sampling Interval: 0.5  
Auto Sampling Interval: Enabled  
Scan Mode: Single

| No. | P/V | Wavelength | Abs.   | Description |
|-----|-----|------------|--------|-------------|
| 1   | ●   | 524.0      | 0.1774 |             |
| 2   | ●   | 351.5      | 0.1065 |             |

[Instrument Properties]  
Instrument Type: UV-1900 Series  
Measuring Mode: Absorbance  
Slit Width: 1.0 nm  
Light Source Change Wavelength: 340.8 nm  
S/R Exchange: Normal

[Attachment Properties]  
Attachment: None

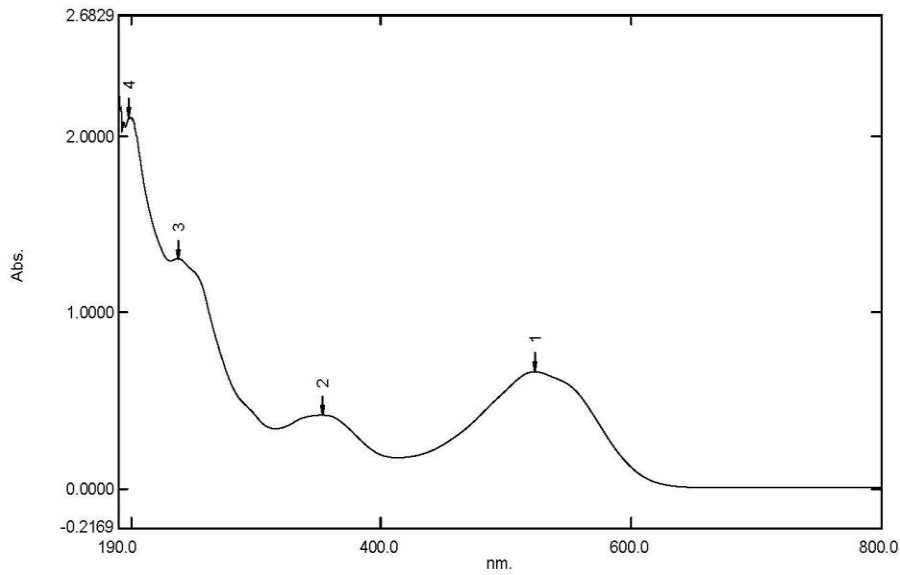
[Operation]  
Threshold: 0.0010000  
Points: 4  
InterPolate: Disabled  
Average: Disabled

[Sample Preparation Properties]  
Weight: 0.1  
Volume: 100  
Dilution: 10 ppm  
Path Length:  
Additional Information:

# Spectrum Peak Pick Report

08-03-2019 04:23:13 PM

Data Set: BORDEAUX MB B-2018-113 40PPM - RawData



[Measurement Properties]

Wavelength Range (nm.): 190.0 to 800.0  
 Scan Speed: Fast  
 Sampling Interval: 0.5  
 Auto Sampling Interval: Enabled  
 Scan Mode: Single

| No. | P/V | Wavelength | Abs.   | Description |
|-----|-----|------------|--------|-------------|
| 1   | ●   | 523.0      | 0.6627 |             |
| 2   | ●   | 353.5      | 0.4168 |             |
| 3   | ●   | 237.5      | 1.3039 |             |
| 4   | ●   | 198.5      | 2.1089 |             |

[Instrument Properties]

Instrument Type: UV-1900 Series  
 Measuring Mode: Absorbance  
 Slit Width: 1.0 nm  
 Light Source Change Wavelength: 340.8 nm  
 S/R Exchange: Normal

[Attachment Properties]

Attachment: None

[Operation]

Threshold: 0.0010000  
 Points: 4  
 InterPolate: Disabled  
 Average: Disabled

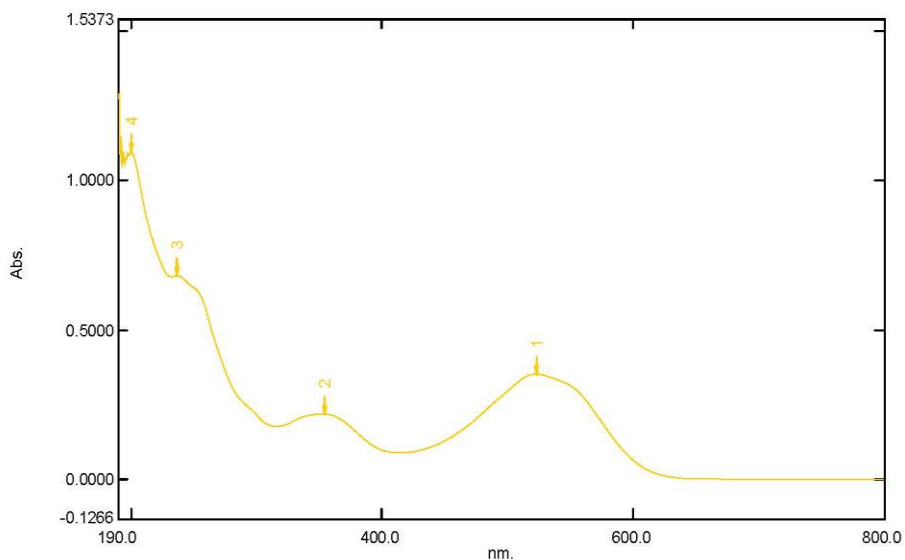
[Sample Preparation Properties]

Weight: 0.1  
 Volume: 100  
 Dilution: 40 ppm  
 Path Length:  
 Additional Information:

# Spectrum Peak Pick Report

08-03-2019 04:21:24 PM

Data Set: BORDEAUX MB B-2018-113 20PPM - RawData



[Measurement Properties]  
Wavelength Range (nm.): 190.0 to 800.0  
Scan Speed: Fast  
Sampling Interval: 0.5  
Auto Sampling Interval: Enabled  
Scan Mode: Single

| No. | P/V | Wavelength | Abs.   | Description |
|-----|-----|------------|--------|-------------|
| 1   | ①   | 523.5      | 0.3531 |             |
| 2   | ②   | 354.0      | 0.2194 |             |
| 3   | ③   | 237.0      | 0.6808 |             |
| 4   | ④   | 200.0      | 1.0946 |             |

[Instrument Properties]  
Instrument Type: UV-1900 Series  
Measuring Mode: Absorbance  
Slit Width: 1.0 nm  
Light Source Change Wavelength: 340.8 nm  
S/R Exchange: Normal

[Attachment Properties]  
Attachment: None

[Operation]  
Threshold: 0.0010000  
Points: 4  
InterPolate: Disabled  
Average: Disabled

[Sample Preparation Properties]  
Weight: 0.1  
Volume: 100  
Dilution: 20 ppm  
Path Length:  
Additional Information: