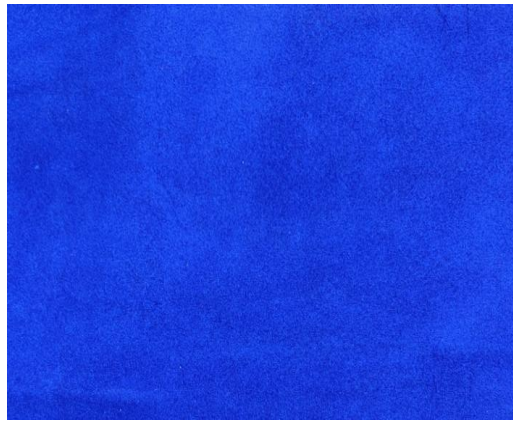


**BLUE FF**

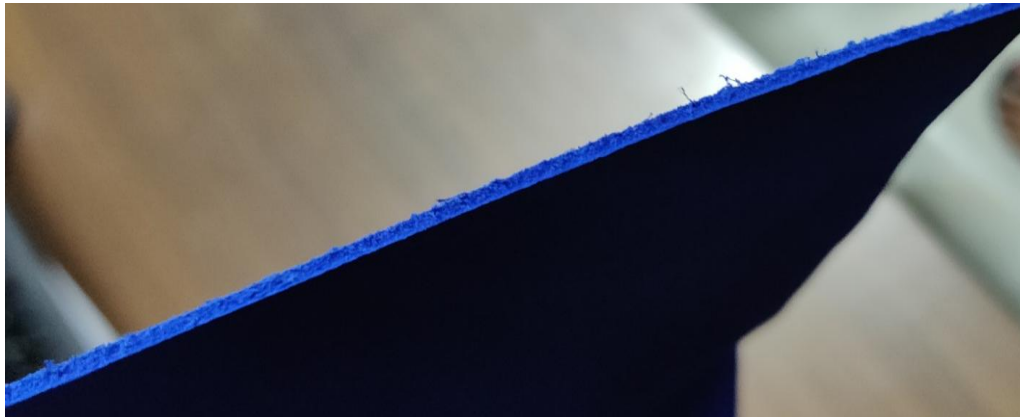
**TOP DYEING - 2%**



**SPLIT - 3%**



**PENETRATION**



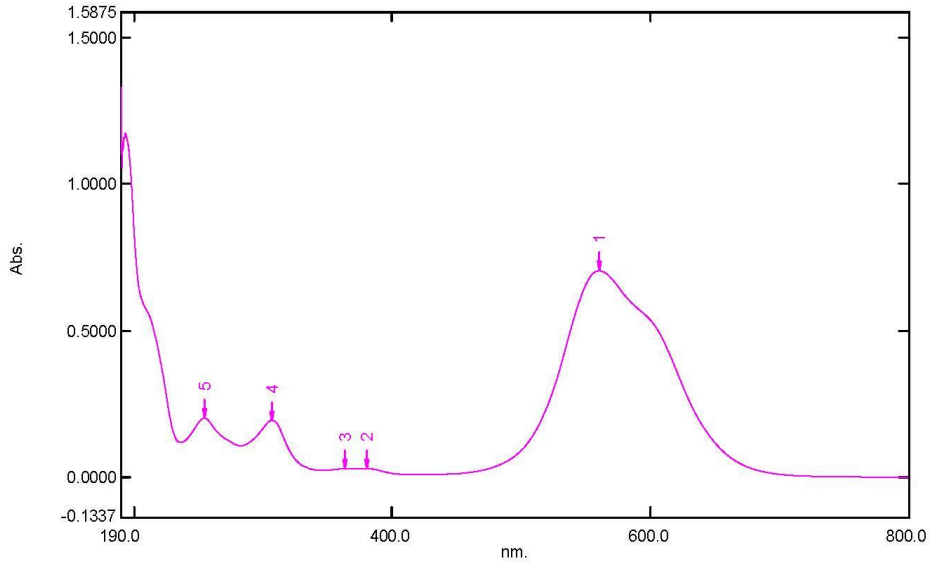
| 60° Solubility | Penetration | Light | <b>F A S T N E S S</b> |     |     |         |     |     |
|----------------|-------------|-------|------------------------|-----|-----|---------|-----|-----|
|                |             |       | PERSPIRATION           |     |     | WASHING |     |     |
|                |             |       | CS                     | SC  | SW  | CS      | SC  | SW  |
| 50             | 3           | 2     | 3-4                    | 3-4 | 3-4 | 3-4     | 3-4 | 3-4 |

SCALE - 1 TO 5  
 CS - COTTON + SILK  
 SC - SPUN DIACETATE  
 SW - SPUN WOOL

# Spectrum Peak Pick Report

28-02-2019 03:23:53 PM

Data Set: BLUE FF B-2018-90 10PPM - RawData



[Measurement Properties]

Wavelength Range (nm.): 190.0 to 800.0  
 Scan Speed: Fast  
 Sampling Interval: 0.5  
 Auto Sampling Interval: Enabled  
 Scan Mode: Single

| No. | P/V | Wavelength | Abs.   | Description |
|-----|-----|------------|--------|-------------|
| 1   | ●   | 561.0      | 0.7045 |             |
| 2   | ●   | 381.0      | 0.0280 |             |
| 3   | ●   | 363.0      | 0.0287 |             |
| 4   | ●   | 307.0      | 0.1937 |             |
| 5   | ●   | 254.5      | 0.2010 |             |

[Instrument Properties]

Instrument Type: UV-1900 Series  
 Measuring Mode: Absorbance  
 Slit Width: 1.0 nm  
 Light Source Change Wavelength: 340.8 nm  
 S/R Exchange: Normal

[Attachment Properties]

Attachment: None

[Operation]

Threshold: 0.0010000  
 Points: 4  
 InterPolate: Disabled  
 Average: Disabled

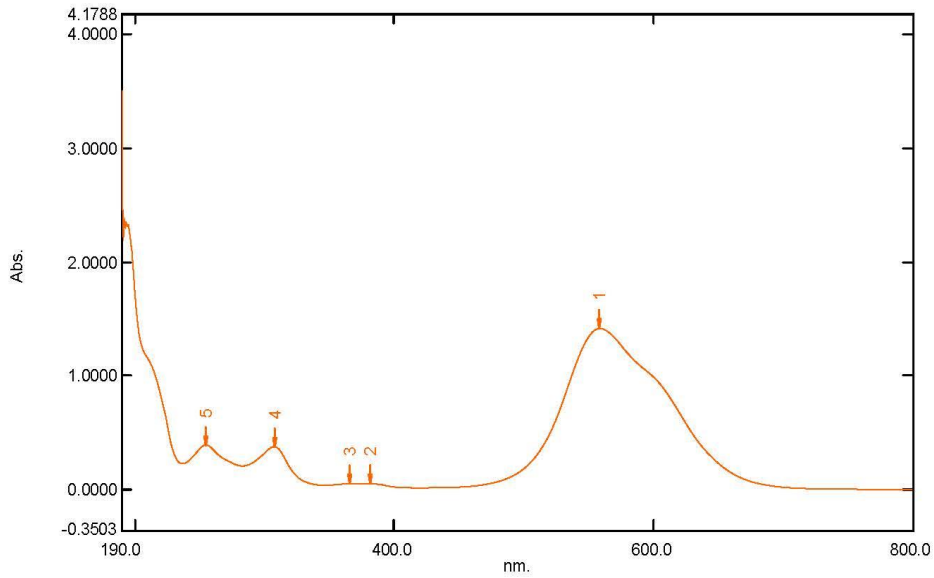
[Sample Preparation Properties]

Weight: 0.1  
 Volume: 100  
 Dilution: 10 ppm  
 Path Length:  
 Additional Information:

# Spectrum Peak Pick Report

28-02-2019 03:28:08 PM

Data Set: BLUE FF B-2018-90 20PPM - RawData



[Measurement Properties]  
Wavelength Range (nm.): 190.0 to 800.0  
Scan Speed: Fast  
Sampling Interval: 0.5  
Auto Sampling Interval: Enabled  
Scan Mode: Single

[Instrument Properties]  
Instrument Type: UV-1900 Series  
Measuring Mode: Absorbance  
Slit Width: 1.0 nm  
Light Source Change Wavelength: 340.8 nm  
S/R Exchange: Normal

[Attachment Properties]  
Attachment: None

[Operation]  
Threshold: 0.0010000  
Points: 4  
InterPolate: Disabled  
Average: Disabled

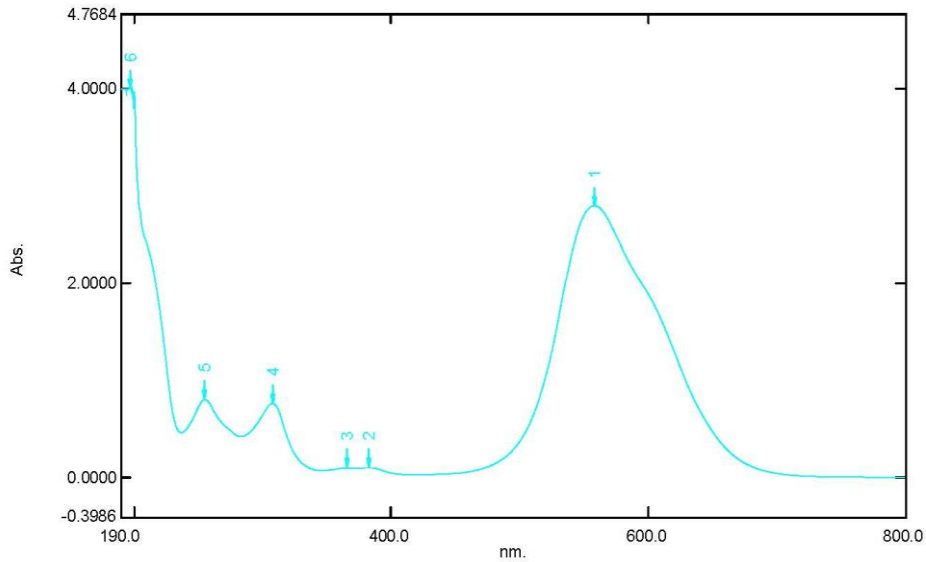
[Sample Preparation Properties]  
Weight: 0.1  
Volume: 100  
Dilution: 20 ppm  
Path Length:  
Additional Information:

| No. | P/V | Wavelength | Abs.   | Description |
|-----|-----|------------|--------|-------------|
| 1   | ●   | 559.0      | 1.4152 |             |
| 2   | ●   | 382.0      | 0.0501 |             |
| 3   | ●   | 365.5      | 0.0497 |             |
| 4   | ●   | 307.5      | 0.3756 |             |
| 5   | ●   | 254.5      | 0.3918 |             |

# Spectrum Peak Pick Report

28-02-2019 03:31:07 PM

Data Set: BLUE FF B-2018-90 40PPM - RawData



[Measurement Properties]

Wavelength Range (nm.): 190.0 to 800.0  
 Scan Speed: Fast  
 Sampling Interval: 0.5  
 Auto Sampling Interval: Enabled  
 Scan Mode: Single

[Instrument Properties]

Instrument Type: UV-1900 Series  
 Measuring Mode: Absorbance  
 Slit Width: 1.0 nm  
 Light Source Change Wavelength: 340.8 nm  
 S/R Exchange: Normal

[Attachment Properties]

Attachment: None

[Operation]

Threshold: 0.0010000  
 Points: 4  
 InterPolate: Disabled  
 Average: Disabled

[Sample Preparation Properties]

Weight: 0.1  
 Volume: 100  
 Dilution: 40 ppm  
 Path Length:  
 Additional Information:

| No. | P/V | Wavelength | Abs.   | Description |
|-----|-----|------------|--------|-------------|
| 1   | ●   | 559.0      | 2.7993 |             |
| 2   | ●   | 383.0      | 0.1005 |             |
| 3   | ●   | 366.0      | 0.0982 |             |
| 4   | ●   | 307.5      | 0.7607 |             |
| 5   | ●   | 255.0      | 0.8018 |             |
| 6   | ●   | 196.5      | 4.0000 |             |