

BLACK PUM

TOP DYEING - 3%



SPLIT - 3%



PENETRATION



60° Solubility	Penetration	Light	F A S T N E S S					
			PERSPIRATION			WASHING		
			CS	SC	SW	CS	SC	SW
80	5-4	2	4	2-3	4	2-3	2-3	3

SCALE - 1 TO 5

CS - COTTON + SILK

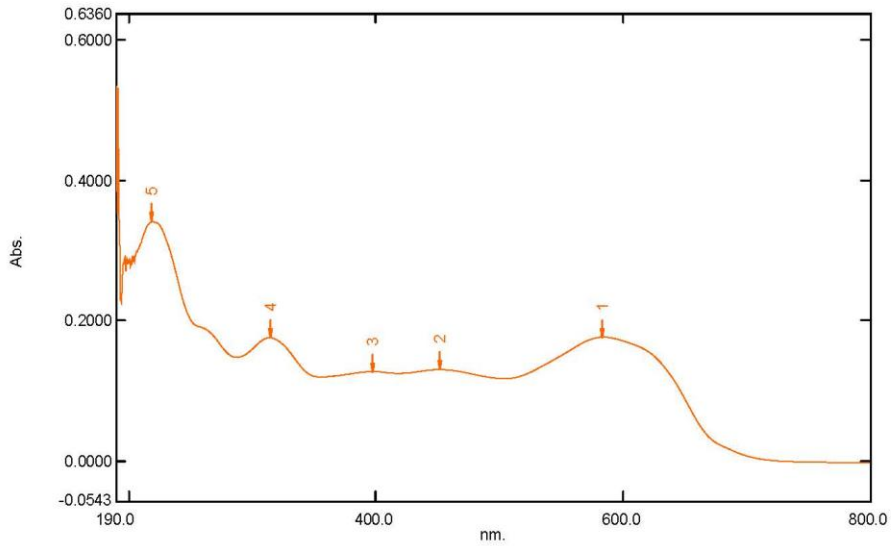
SC - SPUN DIACETATE

SW - SPUN WOOL

Spectrum Peak Pick Report

05-04-2019 03:36:38 PM

Data Set: BLACK PUM B-2018-202 10PPM - RawData



[Measurement Properties]
 Wavelength Range (nm.): 190.0 to 800.0
 Scan Speed: Fast
 Sampling Interval: 0.5
 Auto Sampling Interval: Enabled
 Scan Mode: Single

No.	P/V	Wavelength	Abs.	Description
1	●	584.0	0.1772	
2	●	451.5	0.1310	
3	●	397.5	0.1284	
4	●	314.5	0.1766	
5	●	218.5	0.3412	

[Instrument Properties]
 Instrument Type: UV-1900 Series
 Measuring Mode: Absorbance
 Slit Width: 1.0 nm
 Light Source Change Wavelength: 340.8 nm
 S/R Exchange: Normal

[Attachment Properties]
 Attachment: None

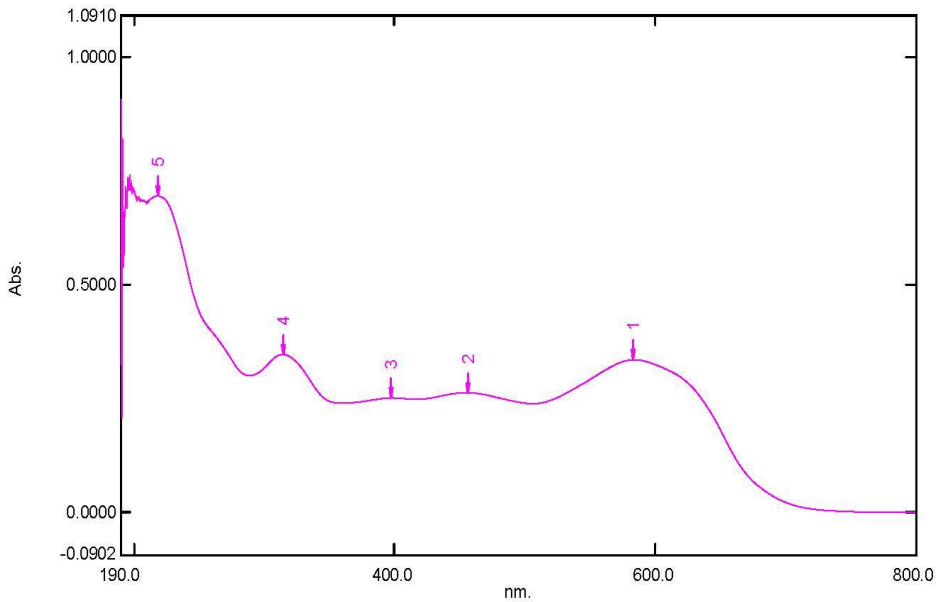
[Operation]
 Threshold: 0.0010000
 Points: 4
 InterPolate: Disabled
 Average: Disabled

[Sample Preparation Properties]
 Weight: 0.1
 Volume: 100
 Dilution: 10 ppm
 Path Length:
 Additional Information:

Spectrum Peak Pick Report

05-04-2019 03:33:44 PM

Data Set: BLACK PUM B-2018-202 20PPM - RawData



[Measurement Properties]
Wavelength Range (nm.): 190.0 to 800.0
Scan Speed: Fast
Sampling Interval: 0.5
Auto Sampling Interval: Enabled
Scan Mode: Single

No.	P/V	Wavelength	Abs.	Description
1	⊕	584.0	0.3351	
2	⊕	456.0	0.2629	
3	⊕	397.5	0.2516	
4	⊕	314.5	0.3473	
5	⊕	218.0	0.6949	

[Instrument Properties]
Instrument Type: UV-1900 Series
Measuring Mode: Absorbance
Slit Width: 1.0 nm
Light Source Change Wavelength: 340.8 nm
S/R Exchange: Normal

[Attachment Properties]
Attachment: None

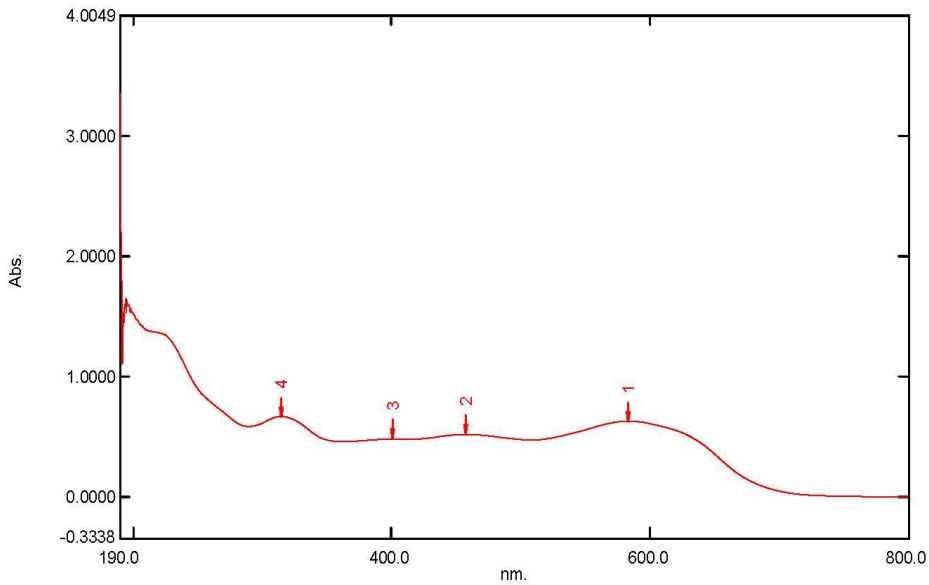
[Operation]
Threshold: 0.0010000
Points: 4
InterPolate: Disabled
Average: Disabled

[Sample Preparation Properties]
Weight: 0.1
Volume: 100
Dilution: 20 ppm
Path Length:
Additional Information:

Spectrum Peak Pick Report

05-04-2019 03:25:12 PM

Data Set: BLACK PUM B-2018-202 40PPM - RawData



[Measurement Properties]
Wavelength Range (nm.): 190.0 to 800.0
Scan Speed: Fast
Sampling Interval: 0.5
Auto Sampling Interval: Enabled
Scan Mode: Single

No.	P/V	Wavelength	Abs.	Description
1	●	583.5	0.6313	
2	●	458.0	0.5200	
3	●	401.0	0.4830	
4	●	314.5	0.6706	

[Instrument Properties]
Instrument Type: UV-1900 Series
Measuring Mode: Absorbance
Slit Width: 1.0 nm
Light Source Change Wavelength: 340.8 nm
S/R Exchange: Normal

[Attachment Properties]
Attachment: None

[Operation]
Threshold: 0.0010000
Points: 4
InterPolate: Disabled
Average: Disabled

[Sample Preparation Properties]
Weight: 0.1
Volume: 100
Dilution: 40 ppm
Path Length:
Additional Information: