



BEIGE CF

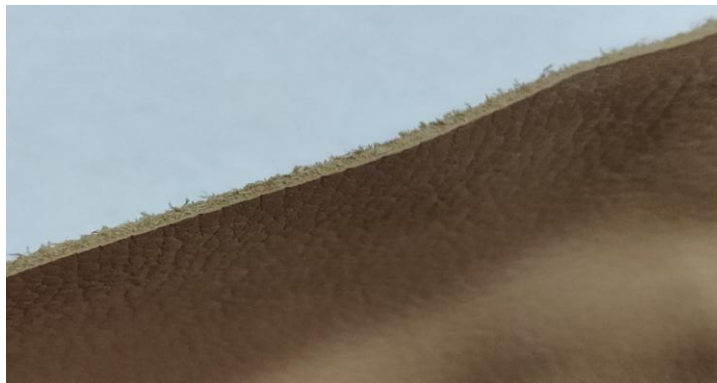
TOP DYEING - 2%



SPLIT - 3%



PENETRATION



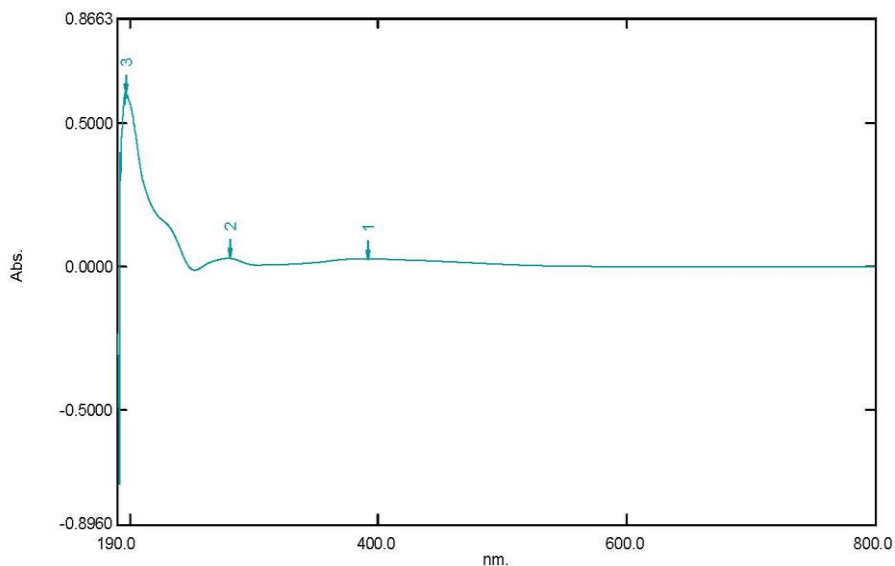
60° Solubility	Penetration	Light	F A S T N E S S					
			PERSPIRATION			WASHING		
			CS	SC	SW	CS	SC	SW
50	4	4	3	2	3	4	3-4	4

SCALE - 1 TO 5
 CS - COTTON + SILK
 SC - SPUN DIACETATE
 SW - SPUN WOOL

Spectrum Peak Pick Report

02-04-2019 04:02:01 PM

Data Set: BEIGE CF B-2018-183 10PPM - RawData



[Measurement Properties]

Wavelength Range (nm.): 190.0 to 800.0
 Scan Speed: Fast
 Sampling Interval: 0.5
 Auto Sampling Interval: Enabled
 Scan Mode: Single

No.	P/V	Wavelength	Abs.	Description
1	●	392.0	0.0287	
2	●	280.5	0.0298	
3	●	196.5	0.6042	

[Instrument Properties]

Instrument Type: UV-1900 Series
 Measuring Mode: Absorbance
 Slit Width: 1.0 nm
 Light Source Change Wavelength: 340.8 nm
 S/R Exchange: Normal

[Attachment Properties]

Attachment: None

[Operation]

Threshold: 0.0010000
 Points: 4
 InterPolate: Disabled
 Average: Disabled

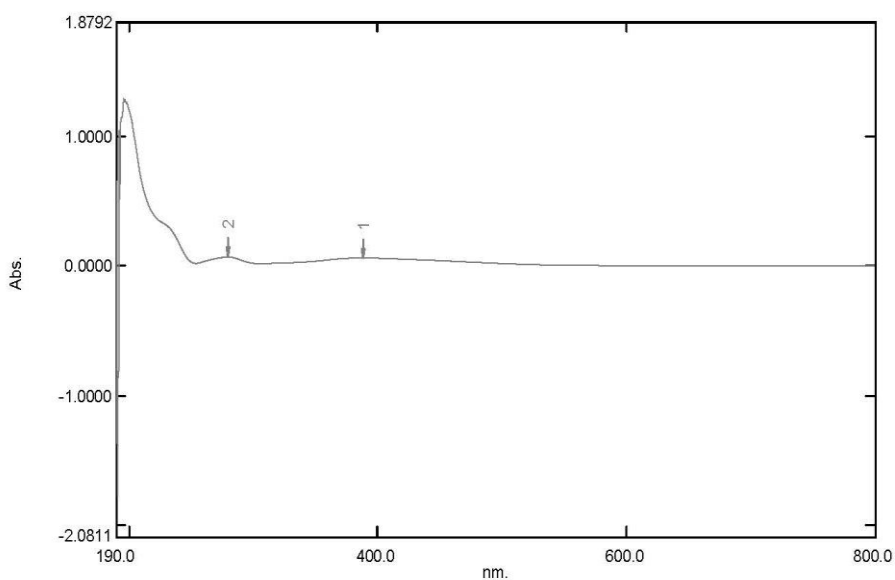
[Sample Preparation Properties]

Weight: 0.1
 Volume: 100
 Dilution: 10 ppm
 Path Length:
 Additional Information:

Spectrum Peak Pick Report

02-04-2019 03:59:48 PM

Data Set: BEIGE CF B-2018-183 20PPM - RawData



[Measurement Properties]
Wavelength Range (nm.): 190.0 to 800.0
Scan Speed: Fast
Sampling Interval: 0.5
Auto Sampling Interval: Enabled
Scan Mode: Single

No.	P/V	Wavelength	Abs.	Description
1	●	388.5	0.0623	
2	●	280.0	0.0694	

[Instrument Properties]
Instrument Type: UV-1900 Series
Measuring Mode: Absorbance
Slit Width: 1.0 nm
Light Source Change Wavelength: 340.8 nm
S/R Exchange: Normal

[Attachment Properties]
Attachment: None

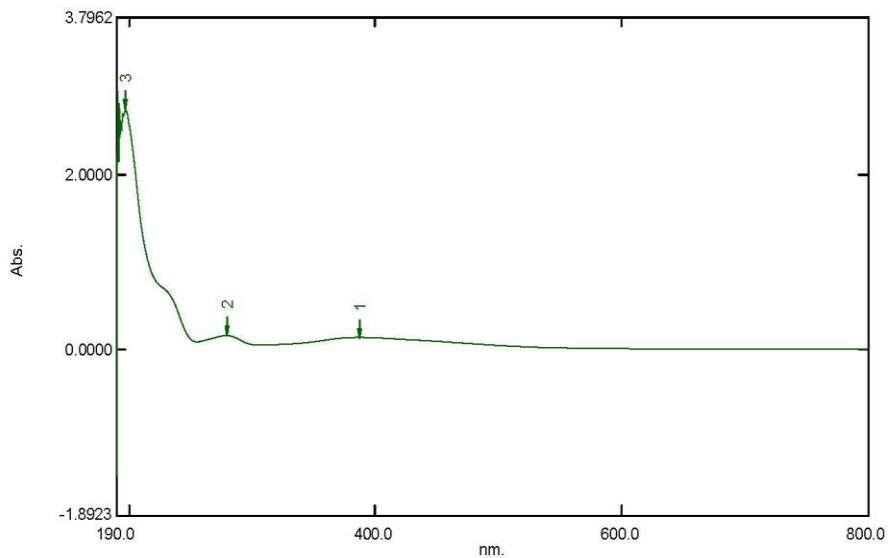
[Operation]
Threshold: 0.0010000
Points: 4
InterPolate: Disabled
Average: Disabled

[Sample Preparation Properties]
Weight: 0.1
Volume: 100
Dilution: 20 ppm
Path Length:
Additional Information:

Spectrum Peak Pick Report

02-04-2019 03:49:25 PM

Data Set: BEIGE CF B-2018-183 40PPM - RawData



[Measurement Properties]
Wavelength Range (nm.): 190.0 to 800.0
Scan Speed: Fast
Sampling Interval: 0.5
Auto Sampling Interval: Enabled
Scan Mode: Single

No.	P/V	Wavelength	Abs.	Description
1	●	387.5	0.1336	
2	●	280.0	0.1544	
3	●	197.0	2.7487	

[Instrument Properties]
Instrument Type: UV-1900 Series
Measuring Mode: Absorbance
Slit Width: 1.0 nm
Light Source Change Wavelength: 340.8 nm
S/R Exchange: Normal

[Attachment Properties]
Attachment: None

[Operation]
Threshold: 0.0010000
Points: 4
InterPolate: Disabled
Average: Disabled

[Sample Preparation Properties]
Weight: 0.1
Volume: 100
Dilution: 40 ppm
Path Length:
Additional Information: